



**Look at what we've done.
Imagine what we can do,
together.**

Grand Haven Area Community Foundation | 2021



Enhancing the quality of life for all by working together to collectively address challenges and opportunities throughout West Michigan.

In addition to celebrating 50 years of impact in Northwest Ottawa County in 2021, the GHACF continued to focus on our day-to-day work in the community and behind the scenes. Following are a few additional highlights from the year. The GHACF:

- Completed a 3-year strategic plan with significant accomplishments to Inspire Philanthropy, Manage Investments, and Impact Community. 2021 also included efforts to develop the 2022-2024 strategic plan.
- Granted over \$8 million back into the community through various funds such as our Community Impact Grant Program, Donor Advised Funds, Scholarships, etc.
- Raised more than \$12 million in contributions to all funds at the GHACF.
- Began the reaccreditation process for the National Standards for U.S. Community Foundations Accreditation Program which represents a community foundation's commitment to going above and beyond federal and state requirements to demonstrate accountability and excellence to communities, policymakers, and the public.

- Conducted a second Donor Advised Fundholder Survey to gather and compare valuable feedback.
- Achieved another clean audit in partnership with Plante Moran.
- Began a full software conversion that will provide more user-friendly access for our donors, fundholders, and applicants for the scholarship and competitive grant programs, as well as streamline internal processes through an integrated system.
- Continued work on an organizational growth plan to increase capacity and best serve the community.
- Had an active and ongoing role in organizations and initiatives such as: Association of Fundraising Professionals of West Michigan, Community SPOKE, Council of Michigan Foundations, Council on Foundations, Grand Haven Rotary Club, Housing Next, Lakeshore Nonprofit Alliance, Ottawa County American Rescue Plan Act Task Force, Ottawa County Housing Commission, and Western Michigan Planned Giving Group.

A Letter to the Community

Fifty years ago, 12 community leaders gathered together because they wanted to do something more for our community. Something bigger. They each gave \$100 to start what would become the Grand Haven Area Community Foundation. Little did they know the impact they would have a half-century later.

Over the course of the past 50 years, with careful investing, continued contributions from our community, and the dedication of our trustees and staff, that \$1,200 has grown to nearly \$190 million in assets (graph on page 5). The grants we've awarded have touched more lives than our founders could have ever imagined. Looking at the next 50 years—and beyond—we are confident the foundation and our partners will continue to impact our community for generations to come.

The heart of our 50th anniversary celebration was this community. Each and every one of our neighbors serve as integral building blocks for all we have done. The impact we've made together—and will continue to make for generations to come—is a reflection of the strength of our partnerships and our dedication to making a positive impact on every person who lives, works, and plays in Northern Ottawa County.

Our 50th anniversary was all about celebrating what we have accomplished together over the past 50 years and inspiring our shared future. It's why we chose the tagline: Look at what we've done. Imagine what we can do, together.

In addition to telling stories of our history and those who have helped guide the foundation to where we are today, we celebrated by working with our partners to engage the entire community through a variety of new and different ways – and of course by giving back.

The 50th anniversary celebration was for our community:

- The people who've given their time, talent, and treasure to ensure the community foundation thrived through good times and bad,
- The people who've benefited from the grants that have been awarded to our for-impact partners, and
- The people whose philanthropic intent have funded our initiatives for a half-century.

Without those individuals, families, organizations, and corporations, the Grand Haven Area Community Foundation would not have become what it is today. They are all an important part of our history, and we are eager for what comes next. Looking over our past 50 years, we're filled with gratitude over what it's taken to get to this point.

- The vision of our founders,
- The dedication of our trustees,
- The commitment of our team,
- The hard work of our for-impact partners, and
- The generosity of our donors

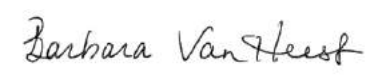
have all ensured that what started as an idea by 12 individuals has become a valued institution that has positively impacted countless lives in our community.

Thank you to our partners, our donors, our board, the team, and to everyone who's helped us get to this point. Look at what we've done. Imagine what we can do, together.

Sincerely,



Hadley Streng
President



Barb VanHeest
Chair, Board of Trustees

Strategic Plan

Grand Haven Area Community Foundation 2022 - 2024

Vision

We advance the well-being of our communities by creating the very best places to live, learn, work, give, and engage.

Leadership Effectiveness

Time

Convener ✦ Introducer ✦ Guide

Talent

Genuine Listener ✦ Shared Community Knowledge Center ✦ Innovator

Treasure

Inviter ✦ Steward ✦ Funder ✦ Educator ✦ Legacy Creator

Ties

Cross-Sector Partner ✦ Capacity Builder ✦ Problem Solver

Impact Community

Manage Investments

Inspire Philanthropy

What Success Looks Like

- ☀️ *Our for-impact partners and donors are our catalysts for greater community understanding and change*
- ☀️ *Our broader community is inspired to greater giving that advances our mission*
- ☀️ *Our endowment portfolio is stewarded to give yet also to grow*

Mission

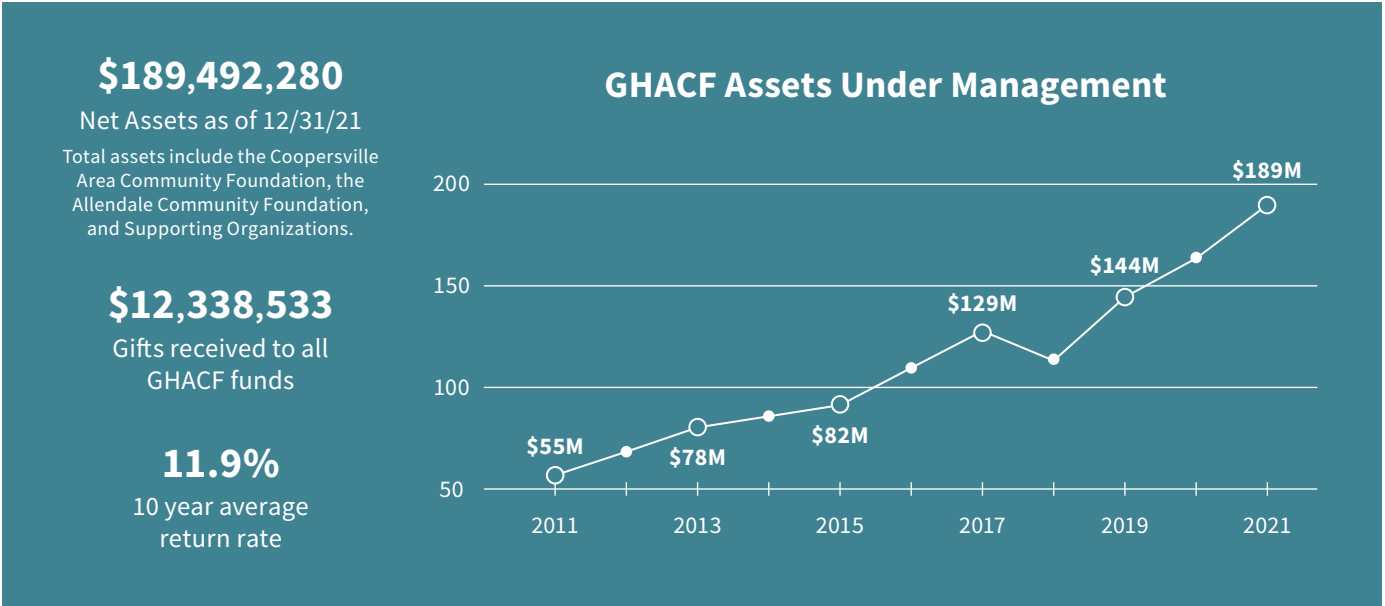
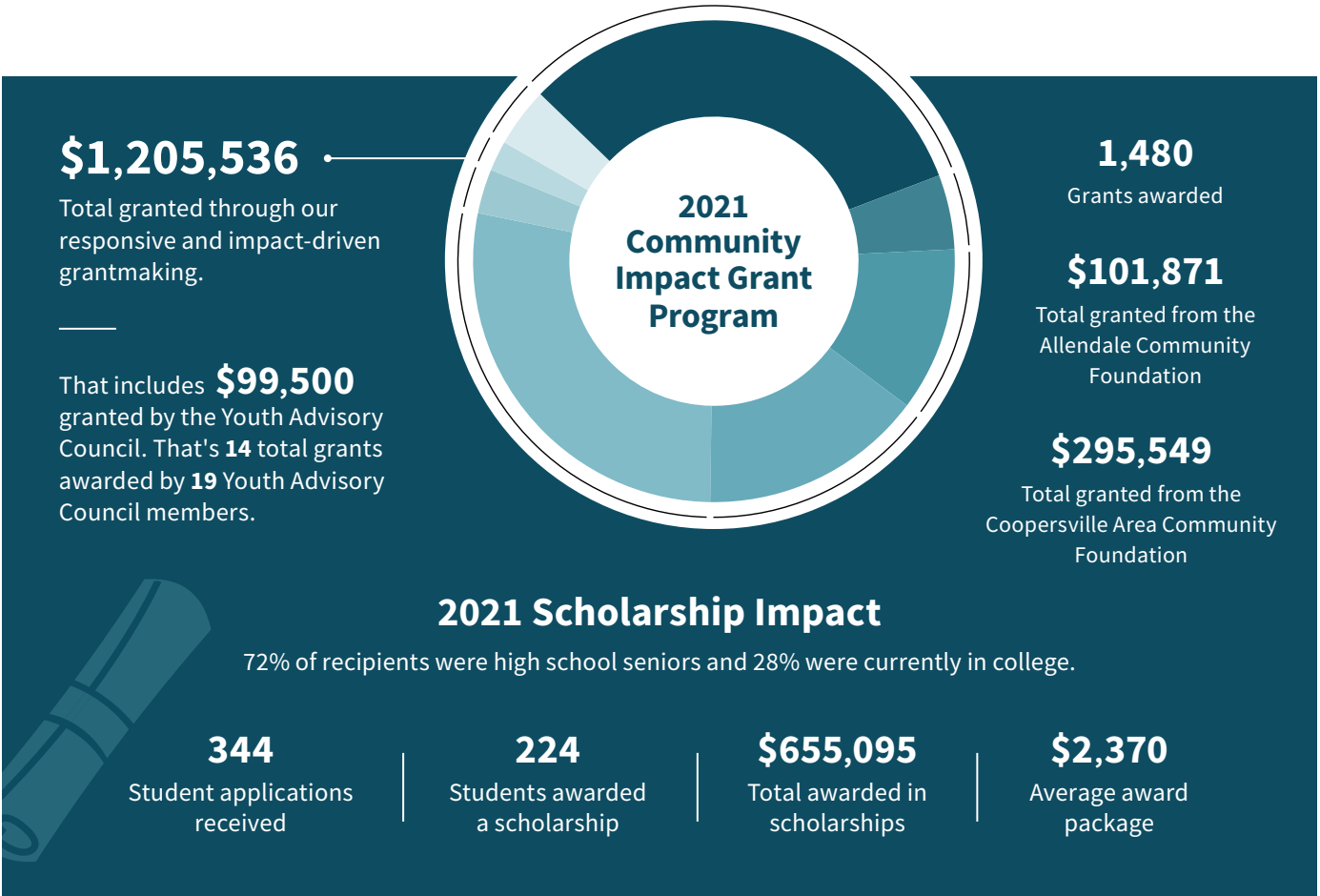
We enhance the quality of life for all by working together to collectively address challenges and opportunities throughout West Michigan.

Values

Stewardship ✦ Exceptional & Empowering Service ✦ Integrity ✦ Entrepreneurial Spirit ✦ Inclusion

At A Glance

In 2021, a total of **\$8,482,761** went back to our community from all funds. Below are some highlights:



50 Years of Leading With Vision & Integrity

Look at what we've done. Imagine what we can do, together.

The GHACF 50th Anniversary was about celebrating what we have accomplished together over the past 50 years - and inspiring our shared future. We reflected on the impact of those who came before us and celebrated the work of the GHACF in various ways.

A series of videos was created to share stories about the first fifty years and the people who gave generously, received graciously, and cared passionately for our community. In addition to telling stories of our history and those who helped guide the foundation to where it is today, we shared our role being a partner serving and solving our community's greatest needs through the work of our Community Impact Grant Program. Details of the creation of various programs were documented through videos - such as the Youth Advisory Council, Legacy Society, and the start of our journey towards Diversity, Equity, and Inclusion.

Monthly columns, newsletters, social media posts, and ads in local publications – and – regular

interviews and ads on local radio stations helped increase awareness of the impact of the GHACF. We blanketed the community with our banners and the window wraps at the office let everyone know it was their community foundation's 50th anniversary.

We also celebrated by working with our partners to engage the entire community through a variety of new and different ways – and of course by giving back. Many community members participated in events and initiatives to celebrate our 50th anniversary, from "Days of Giving Back" to \$50,000 Community Choice Grants - and a new 50th Anniversary Greatest Needs Fund was created for those who wanted to donate to mark the milestone.

We are proud of the history and the partnerships that brought us to this point and 2021 was a year of honoring that history, inspiring our shared future, and increasing engagement with the community.



Day of Giving Back

Greater Ottawa County United Way, Ottawa County Parks, City of Grand Haven, Village of Spring Lake

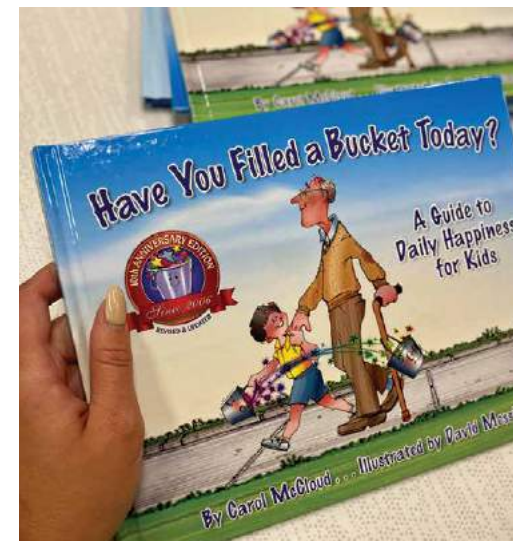
On the GHACF's official 50th anniversary day, May 18, 2021, celebrations kicked off with a Day of Giving Back. The GHACF partnered with the Greater Ottawa County United Way and local parks to organize a day of cleaning up our parks. Over 50 volunteers participated in maintaining gardens, trails, and natural habitats at Duncan Park, Ottawa Sands, Rosy Mound, the Spring Lake Butterfly Garden, and Spring Lake's Whistle Stop Park. The Day of Giving Back also included painting the pump house at Grand Haven's iconic Musical Fountain.



Community Book Read

Schools, Libraries, Shape Corp.

Copies of the book "Have You Filled a Bucket Today?" were provided to every second grader in Northwest Ottawa County. This donation was made possible thanks to a generous contribution from the Shape Corp Fund, a component fund of the Community Foundation. The GHACF also hosted a virtual book read by the book's author, Carol McCloud. *Have You Filled a Bucket Today?* teaches young readers valuable lessons about giving, sharing, and caring — a theme that aligns closely with the GHACF's mission and was a perfect addition to the 50th Anniversary Celebration.



Sidewalk Chalk Celebration

Various Community Events

The GHACF encouraged community members to join the 50th Anniversary Celebration with a particularly fun medium, sidewalk chalk! Over 1,200 boxes of sidewalk chalk were distributed throughout the community and at local farmers markets. Community members were invited to draw what they felt made the community special. The art they created brightened up the community sidewalks and told a wonderful story about what makes Northwest Ottawa County such a beautiful place to live. From our beaches, piers, and parks to the people who make these places a community, there's a lot to feel good about here!





Foundational Art Exhibit

Lakeshore Visual Arts Collective, Muskegon Museum of Art

Another community engagement activity developed in celebration of the Foundation's 50th anniversary was the Foundational Art Exhibit. Local artists were invited to create pieces that highlighted places in our community that were positively impacted by the work of the Foundation. The artists' work was displayed in an art exhibit and show, where pieces were available for purchase by the public. Lakeshore Visual Arts Collective and the Muskegon Museum of Art assisted by inviting artists to participate and helping organize the art exhibit.



Grand Haven & Spring Lake Farmers Market

The Chamber of Commerce Grand Haven, Spring Lake, Ferrysburg

The GHACF sponsored the Power of Produce (POP!) Kids Club, in partnership with the Chamber and local farmers markets, to encourage healthy eating. POP! helps kids between the ages of 2-13 buy fruits and vegetables at the Spring Lake and Grand Haven Farmers Markets. This year, the Foundation also helped to bring this program to local campers at the Tri-Cities YMCA and Northwest Ottawa Recreation Authority (NORA) Summer Rec Program. The GHACF also sponsored a Food Navigator at the Farmers Markets to increase access to fresh, affordable food and educate community members about healthier eating habits. The Food Navigator worked with NORA and Tri-Cities YMCA summer camps, bringing nutritional programming to summer camp participants.



Hispanic Heritage Fiesta

Tri-Cities Puentes Initiative

The GHACF was the lead sponsor for the third annual Hispanic Heritage Fiesta. The week-long event celebrated the many ways the Hispanic community makes our community a great place to live. We were proud to partner with the Tri-Cities Puentes Initiative to help support growth of this event.



Jumpin' Java & Magnum Coffee



Marushka

Shop Local Program

Various local businesses

The GHACF's Shop Local program was launched to help spread the 50th Anniversary Celebration throughout Northwest Ottawa County. Local businesses across the community sold GHACF-themed items in their stores. From sandwiches and chocolate to ice cream, coffee, and even items for the home, the Shop Local program helped to support area small businesses and celebrate the 50th anniversary.



Patricia's Chocolates



Sweet Temptations



\$50K Community Choice Grants

Local municipalities

In honor of our 50th Anniversary Celebration, the GHACF granted a total of \$50,000 to local municipalities through a series of community choice grants that made seven community projects possible. Working together with local governments, each municipality chose projects for their community and received \$7,142 from the GHACF. Residents voted on the GHACF Facebook page to select their favorite projects for each municipality. Winning improvements included:

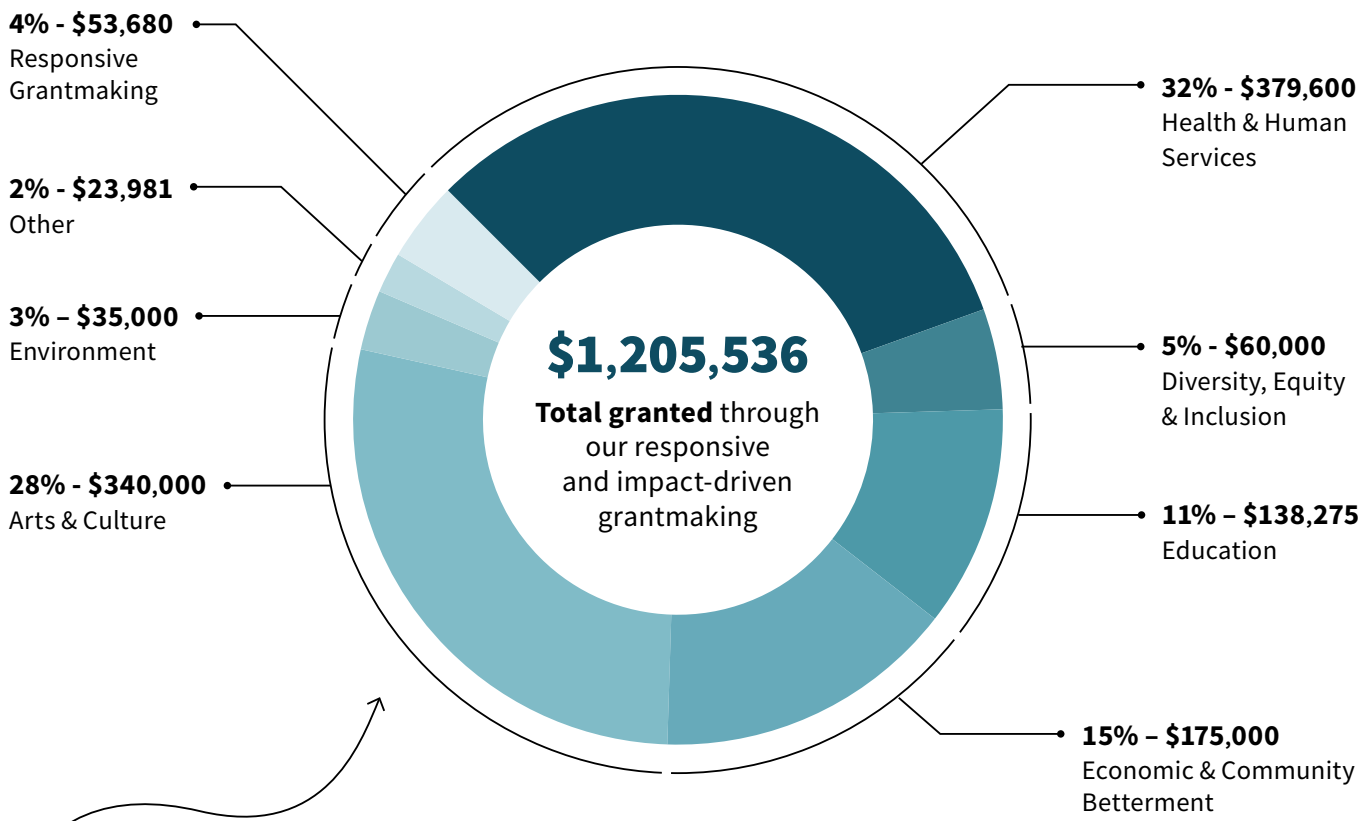
- **City of Ferrysburg:** Historical Marker Site Improvement
- **City of Grand Haven:** Bike Racks in Downtown, Centertown, and Washington Square
- **Crockery Township:** Northbank Park Amenities
- **Grand Haven Township:** Bench & Water Fountain Improvement
- **Robinson Township:** Library Book Return Box
- **Spring Lake Township:** Bike Path Benches
- **Village of Spring Lake:** Central Park All-Access Play Equipment

Impact Community

The Grand Haven Area Community Foundation is proud of our role as a community grantmaker. It is our mission to improve and enhance our community, and we aim to achieve that intent by making strategic community investments in programs that share our mission. The GHACF supports and invests in programs that enhance the quality of life of our community members and that promote a healthy, inclusive, collaborative, and diverse community here in Northwest Ottawa County.

Granting for Impact

In 2021, a total of **\$8,482,761** went back to our community from all funds, and of that **\$1,205,536** was awarded in grants from our Greatest Needs Funds, Field of Interest Funds, and the Youth Fund.



Amount Granted From

| | |
|--------------------------------|-------------|
| Donor Advised Funds | \$3,347,050 |
| Organizational/Agency Funds | \$1,810,635 |
| Community Impact Grant Program | \$1,205,536 |
| Scholarship Funds | \$604,635 |
| Community Service Funds | \$585,595 |
| Designated Funds | \$511,890 |
| Affiliates | \$397,420 |
| Supporting Organization | \$20,000 |
| Total | \$8,482,761 |



The following pages feature **grant impact stories** from 2021.

Health & Human Services

Helping Families Facing Housing Crisis

The housing crisis is a long-standing concern for our community and one that the Foundation is dedicated to resolving in as many ways possible. The Community Foundation awarded a grant over three years to **Good Samaritan Ministries (GSM)** to open a satellite office in Northwest Ottawa County.

About Good Samaritan Ministries

GSM serves as the Housing Assessment and Resource Agency (HARA) for Ottawa County, providing essential housing services to residents from Spring Lake, Grand Haven, and Ferrysburg. The support GSM offers is crucial to Northwest Ottawa County households, but before this award, vulnerable neighbors faced a significant barrier to access these services — a location barrier. “As the HARA, Good Samaritan Ministries is dedicated to providing the entire county with critical services to prevent and provide a path out of homelessness,” said Drew Peirce,

Executive Director at GSM. “However, we recognized a significant barrier for vulnerable neighbors in Northwest Ottawa County from receiving the services they need and deserve: location.”

The Challenge & Solution

Previously, residents of Northwest Ottawa County had to travel to the GSM Holland Office for supportive services. From the Spring Lake Township office, it is approximately 45 miles, round-trip. This trip is not only a significant time expense but requires safe and reliable access to transportation as it is outside of the Grand Haven Harbor Transit service area. Funding was used to catalyze an expansion of these services already provided to Northwest Ottawa County, allowing GSM to hire dedicated staff, establish a physical presence, and provide rental assistance for families facing homelessness. Peirce added, “Availability of time and transportation should not be a barrier to anyone receiving help. We are thrilled to build a local, accessible, and collaborative presence with our Grand Haven nonprofit partners.”

“As the HARA, Good Samaritan Ministries is dedicated to providing the entire county with critical services to prevent and provide a path out of homelessness. However, we recognized a significant barrier for vulnerable neighbors in Northwest Ottawa County from receiving the services they need and deserve: location.”

Drew Peirce - Executive Director,
Good Samaritan Ministries

Continued Support

Following the impact of the COVID-19 crisis in Ottawa County, GSM was designated by the State of Michigan to create and manage an expanded Eviction Diversion Program for the county (hundreds of families from our area within this program). In a typical year, prior to the pandemic, GSM would service approximately 20 families in the entire county.

Health & Human Services

Support access to physical and mental health services; Promote healthy lifestyles and relationships for all; Address priorities based on data gathered through Community Needs Assessments and Community Health Improvement Plans; Support local health initiatives that are endorsed by multi-sector collaborations; Address human needs for underserved populations.

Additional Community Impact Grants:

Kent County Girls on the Run (GOTR)

Grant funds were awarded to expand GOTR programs into Northern Ottawa County. These funds were utilized to re-establish programs and develop the necessary resources and tools for strong and sustainable programming within these communities.

Lighthouse Immigrant Advocates (LIA)

Grant funds were awarded to support refugees resettling in the West Michigan region. Operation Afghan Refugee Clinic LIA serves as the legal services clearinghouse for all Afghan refugee resettlement cases in West Michigan.

The Momentum Center

Grant funds were awarded to test the efficacy of the Momentum Center Model in partnership with Community Mental Health -

Ottawa County, North Ottawa Community Hospital (NOCH), and Pine Rest Christian Mental Health Services. The findings of this study will allow community health leaders to gain a deeper understanding of the Momentum Center, as well as provide an opportunity for further process improvement.

Northwest Ottawa County Chamber Foundation

Grant funds were awarded to support the Grand Haven and Spring Lake Farmers Market's Food Navigator and Power of Produce program. The programs provide critical nutritional programming and access to fruits and vegetables.

Reach for Recovery

Grant funds were awarded to Reach for Recovery to launch a Medication-Assisted Treatment (MAT) for Opioid Use Disorder. MAT is used to treat opioid use disorders, sustain recovery, and prevent overdose.

\$379,600

Total awarded to Health & Human Services grants

Diversity, Equity & Inclusion

Lifting the LEADeres Lakeshore Program

Diversity, equity, and inclusion are at the core of the Grand Haven Area Community Foundation's mission. This year, a grant was awarded to **Tri-Cities Puentes Initiative for "LEADeres Lakeshore,"** a leadership and professional development program for Latinx professionals and leaders in the lakeshore area.

About LEADeres

LEADeres is a Latinx-centric, Latinx-led leadership program. The curriculum explores the Latinx experience in general and particularly examines the question, "What does it mean to be Latinx in a multicultural workplace?" It is centered on the lived experiences of those who have paved the professional path for others so they can learn from those experiences and pass that information to future generations. Cohorts are typically comprised of 15 to 20 participants, and the program is modeled after

the sustainable Grand Rapids LEADeres program of Ferris State University.

Moving Forward

"Tri-Cities Puentes Initiative is excited to partner with Ferris State University in launching LEADeres in the Latinx communities in the Tri-Cities, Holland/Zeeland and Muskegon," said Reyna Masko, Tri-Cities Puentes Initiative Co-Chair. "LEADeres' mission is to develop high-performing Latinx professionals, much like the many already in these communities. However, with the support of the Grand Haven Area Community Foundation, we will grow these numbers exponentially for the benefit of the entire community." Masko added, "In the next ten years we will see the number of Latinx professionals grow, [as well as] increased upward mobility, more Latinx policy makers, [and] Latinx elected officials." Cohorts of professionals learn and grow together over a six-month period, engaging with seasoned leaders and working in a team environment, to identify creative solutions to a community or business

problem. LEADeres emphasizes identity formation and personal development in the areas of innovation, cultural intelligence, leadership, professional development, and community and civic engagement. Personal narratives are incorporated to illuminate concepts and create opportunities for reflection, and guest speakers share their individual stories about cultural identity and their professional life journeys.

"LEADeres' mission is to develop high-performing Latinx professionals, much like many already in these communities. However, with the support of the Grand Haven Area Community Foundation, we will grow these numbers exponentially for the benefit of the entire community."

Reyna Masko - Co-Chair,
Tri-Cities Puentes Initiative



Reyna Masko - Co-Chair, Tri-Cities Puentes Initiative



Diversity, Equity & Inclusion

Address diversity, equity, and inclusion within the community; Involve and empower the inherent worth and dignity of all people; Promote and sustain a sense of belonging within the community.

Additional Community Impact Grants:

Ottawa County Office of Diversity, Equity, and Inclusion
Grant funds were awarded to the Ottawa County Diversity, Equity, and Inclusion Office to facilitate the Government Alliance on Race and Equity Learning Communities of Practice

(GARE LCoP). This initiative brings together eight governmental organizations along the lakeshore to take meaningful steps toward advancing racial equity at the regional level.

\$60,000

Total awarded to Diversity, Equity & Inclusion grants

Education

Supporting Educator Well-Being in Northwest Ottawa County

Our teachers and educators help to build strong futures for youth in our community. But with the hardships the last few years have handed educators, they need support just as much as our students do. This year, the Foundation awarded a grant to **Opportunity Thrive for its Educator Wellness Coaching Project**. The project focuses on supporting the emotional well-being of educators in Northwest Ottawa County school districts.

The Challenge & Solution

Rebekah Schipper, Executive Director of Opportunity Thrive shared that “Over the course of the last decade and especially during the pandemic, the critical work of supporting and guiding students has become more challenging and stressful. This GHACF investment will give educators the opportunity to work with coaches

to reclaim their passion and purpose. We are truly grateful for the GHACF’s strong support of educators in districts across Northwest Ottawa County.”

The project has three programs to support educators which include: A Personal Wellness Inventory; Educator Wellness Coaching; and a Coaching Network. The deployment of these programs supports research that highlights a link between the social and emotional well-being of educators and the academic success and social and emotional well-being of students.

When our teachers and educators are cared for and feel safe, calm, and well, they can create better, more effective learning environments for our children and students. The work that Opportunity Thrive does in its Education Wellness Coaching Project helps to create improved educational environments for all.

With the fundamental belief that educators play an integral role in the growth and development of today's youth, GHACF is proud to be able to support

them through a grant to fund the Educator Wellness Coaching project. It is critically important to provide teachers with the resources to take care of their own well-being, and the Educator Wellness Coaching project fulfills that need.

“Over the course of the last decade and especially during the pandemic, the critical work of supporting and guiding students has become more challenging and stressful. This GHACF investment will give educators the opportunity to work with coaches to reclaim their passion and purpose.”

Rebekah Schipper - Executive Director, Opportunity Thrive



Education

Address the barriers preventing students from pursuing post-secondary education opportunities; Improve student access to the necessary academic, social, and emotional resources required to reach their full potential; Support access to and participation in quality preschool programs, particularly those in under-served populations.

Additional Community Impact Grants:

Muskegon Early Childhood Development and Literacy Initiative, Muskegon County

Grant funds were awarded to "PK-4-All," a pilot program that supports approximately 350 children from families who may not qualify for federal or state-funded preschool but still require additional support.

The ODC Network

Grant funds were awarded to the program to support over 400 Northwest Ottawa County school children as they participated in a day-camp-styled program complete with lunch, academic and social growth, and opportunities in the natural world. Project 180 is a nature-based summer education program that addresses learning loss due to the pandemic.

\$138,275

Total awarded to Education grants

Economic & Community Betterment

Redeveloping Tanglefoot Park in the Village of Spring Lake

Our community green spaces bring people together. From enjoying outdoor activities like kayaking and hiking to providing a safe space for children and families to enjoy the natural resources that characterize our home county, green space beautifies our community and offers a natural place for meaningful gatherings. This year, a grant was awarded to the **Village of Spring Lake for the redevelopment of Tanglefoot Park.**

About The Project

This redevelopment project provides universal access to the Grand River and community green space while promoting connections and engaging the citizens within and around Spring Lake. “We are so grateful to the Grand Haven Area Community Foundation for the Impact Grant that was awarded to the Village for

our Tanglefoot Transformation,” said Christine Burns, Village of Spring Lake Manager. “This generous grant is going to ensure that Tanglefoot Park has a beautiful splash pad for the community to enjoy. We’re all so excited by this particular amenity because of the enjoyment it’s going to bring and the memories that it’s going to make. Thank you for joining us in this project. We couldn’t do it without you.”

Tanglefoot Park, previously utilized as an RV Park in the Village of Spring Lake, was redesigned to provide the community access to the Grand River and public green space. Ultimately, the project will include an all-access floating kayak/canoe launch, sculpture park, Lakeside Trail trailhead, a children’s splash pad area, a fireplace and patio area, and an event center which will serve as the Village’s Farm and Garden Market year-round.

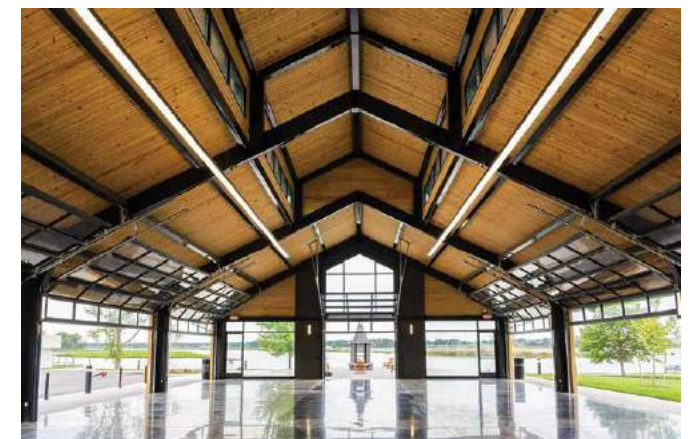
Moving Forward

Northwest Ottawa County's beautiful waterfront and green spaces are integral to our community.

This transformation of Tanglefoot Park delivers all-inclusive access to the beauty of our natural spaces and will have a significantly positive impact on our community both now and long into the future.

“This generous grant is going to ensure that Tanglefoot Park has a beautiful splash pad for the community to enjoy. We’re all so excited by this particular amenity because of the enjoyment it’s going to bring and the memories that it’s going to make. Thank you for joining us in this project. We couldn’t do it without you.”

Christine Burns - Manager,
Village of Spring Lake



Economic & Community Betterment

Support cooperation among municipalities, especially in the areas of recreation, transportation, as well as consolidated planning; Support the revitalization and beautification of areas of commerce in our region.

Additional Community Impact Grants:

Ottawa County Department of Planning and Performance Improvement

Grant funds were awarded to "Ottawa County Digital Inclusion Strategy: Phase one — Comprehensive Data Collection," the first in a four-phase project to better understand the implementation of access to reliable internet access county wide. Phase one

collects data on the accessibility of broadband within the county and researches the affordability of access for households and businesses. Access to the internet continues to be a necessity in our county. Creating an affordable, accessible, and reliable internet connection for individuals, households, and businesses is crucial to the development of Ottawa County.

\$175,000

Total awarded to
Economic & Community
Betterment grants



Arts & Culture

Expanding the Muskegon Museum of Art

A community's art and cultural attractions speak to the vibrancy of the community itself. The **Muskegon Museum of Art (MMA)** holds a critical collection of artwork, but in the current state, only a tiny fraction of that artwork can be displayed. The Grand Haven Area Community Foundation awarded a grant to the MMA for "Shaping the Future," a campaign for museum expansion.

This expansion will transform the MMA from a stopover, one-hour experience to a destination museum with a half-day experience. Most importantly, the expansion ensures the viability and sustainability of the MMA for the next 100 years.

The Muskegon Museum of Art

The MMA's critical artwork collection drives significant community programs. Of the more than 5,000 pieces

in the collection, before the expansion, the museum had the capacity to exhibit fewer than 150 pieces of artwork at any given time.

The MMA serves as one of Northwest Ottawa County's art museums, with nearly 20% of its membership from Northern Ottawa County. In addition, a third of the Museum's trustees are from Northern Ottawa County, representing stakeholder commitment and value.

Campaign Goals

The campaign transforms the MMA into a destination museum for West Michigan by adding three galleries (one 5,000 square foot for major touring exhibitions and two rotating exhibition galleries), two new classrooms or family activity areas, and more collections storage. The current building is turned entirely over to permanent collection. These transformations increase the capacity to leverage artwork assets and programming for the West Michigan region.

“For the Muskegon Museum of Art, the Trustees are committed to keeping the Museum alive, well, and relevant for the next 100 years, keeping Muskegon's great fine arts institution as the premier cultural attraction for our community and the region. To do this, we need to expand, grow, and improve the physical plant.”

Frank Bednarek - Chair, Board of Trustees, Muskegon Museum of Art Foundation



Arts & Culture

Bring regional and national art and cultural experiences and opportunities to the community; Supports programs that deliver arts and cultural experiences to under-served populations of the community; Support the collaboration and growth of local arts and cultural organizations within the community.

Additional Community Impact Grants:

Courtyard Concerts, Inc.

Grant funds were awarded for the "Free Friday Night Summer Concert Series," which provides a series of multi-genre concerts at the Lynne Sherwood Waterfront Stadium throughout the summer season. The concerts are free to the public and abide by current state COVID-19 restrictions.

The Frauenthal Center

To address the renovations, preservations, and structural needs of the Frauenthal Center, grant funds were awarded for "The Next 90 Years — Frauenthal Center Preservation Campaign." The Frauenthal Center is a cultural venue and

attraction for the larger West Michigan community. It provides a central location for cultural and community events, including concerts, art exhibits, weddings, speaking engagements, and theater performances.

West Michigan Symphony

Grant funds were awarded for "Play Your Part," a campaign focusing on long-term, strategic activities and programming. The symphony provides music education programs for all ages, including Link Up, which serves local students at 12 area schools within Grand Haven Area Public Schools, Spring Lake Public Schools, St. Mary's Catholic School, Walden Green Montessori, and West Michigan Academy of Arts & Academics.

\$340,000

Total awarded to Arts & Culture grants

Environment

Supporting Parks for All, Virtually and In-Person

Access to nature education is essential to helping all community members understand how their daily lives interact with and impact the natural spaces around them. To ensure that all community members can enjoy these resources, a grant was awarded to the **Ottawa County Parks Foundation** to expand nature education access through virtual programming and a Parks For All Pilot Program.

About the Project

The program expands access to Ottawa County Parks and their community engagement programs for all residents, particularly those who may have difficulty attending nature education programs in person. This project supports the expansion of nature education access through two initiatives:

1. Virtual programming and nature outreach programs
2. A pilot program called Parks for All

Virtual Programming required the purchase of a range of technology to provide pre-produced and live-streamed programs from multiple park locations. The grant supports online programming that provides those limited by physical health, ability, or transportation access to local parks, most notably to the Nature Center at Hemlock Crossing Park. The Ottawa County Parks Department works with staff, stakeholders, and partners to determine which virtual programs would have the most significant impact and develop an outreach plan for participation.

The Parks for All Pilot Program will allow all 4th grade students within Northern Ottawa County the opportunity to visit a park or park program. The Ottawa County Parks Department will partner with schools across Northern Ottawa County. Programs and field trips will begin in the fall of 2022. The grant will support transportation and program fees for these students for an entire academic year. Throughout the pilot year, special attention will be paid to logistical challenges and associated costs to provide a "proof of concept" for the Parks Foundation supporters.

“The Grand Haven Area Community Foundation has been an integral partner in bridging the community to nature for many years. Through the *Expanding Nature Education Access* grant, we'll be ensuring some of our youngest residents spend meaningful time outdoors with their classmates by developing a program called Parks for All. We'll also work to bring nature to those who may be homebound via new virtual programming.”

Jason Shamblin - Director,
Ottawa County Parks

Making a Difference in Our Region

Ottawa County Parks is reviewing strategies to increase community engagement, especially in under-represented and under-served communities, through outreach and programming. The virtual programming component of this request has the potential to reach those that are homebound and may be unable to attend in person programming while also building awareness of the parks system. The Parks for All Pilot Program will ensure that students experience a park at least one time in their school career as transportation costs are a barrier to organized outings and field trips.



\$35,000

Total awarded to
Environment grants

Environment

Center on the preservation of natural green-space and "smart land use" planning; Address critical water quality issues, including nearshore health, the sustainability of wetlands, and non-source pollutants. Lake Michigan, the Grand River Watershed, Spring Lake, and local creeks and streams are of special concern; Promote environmental sustainability through alternative energy initiatives and recycling projects.

Housing Next

Supporting Housing Needs Within the Community

Housing Next was launched as a collaborative in late 2017 in response to the significant demand for more housing at a variety of price points in Ottawa County. Since then, the collaborative has sparked hundreds of millions of dollars of private investment in real estate development to support workforce housing projects by bridging the divide between developers and municipal decision-makers to help both sides understand the needs, desires, and concerns. Select highlights include:

- Improvement of local zoning codes to reduce regulatory barriers and increase the diversity of housing products in the market.
- Worked alongside four communities on the contribution of public land for affordable and market-rate housing.
- Established collaborations with over 20 developers (for-profit & non-profit) to leverage more than 3,900 new residential units and 30 new developments across the County.
- Led county-wide Housing Needs Assessments in 2018 and updated in 2021.
- Re-established the Ottawa County Housing Commission, which had gone dormant for more than ten years.
- Initiated legislation to make housing simpler to build and preserve.

The initial five-year funding for Housing Next, included a significant grant from the GHACF to fund a full-time Executive Director, support community engagement and communications, offer pre-development grant and loan supports for eligible projects, and seed a responsive grant fund that could be available to support systems innovation or emergency housing needs within the community.

To address the growing gap in housing needs in West Michigan, now estimated at 37,000 units, Housing Next recently announced a new partnership with the Greater Grand Rapids Chamber Foundation. Through their support and with a growing number of other West Michigan employers and organizations, Housing Next has expanded into Kent County. Housing Next is now evaluating plans for continuing the work beyond the initial five-year timeframe.

Following are additional highlights from Northwest Ottawa County in 2021.

Investment in Michigan Community Capital (MCC)

The GHACF provided a crucial \$1.5 million investment for Michigan Community Capital (MCC) to develop workforce housing in Northwest Ottawa County. This investment aligned a portion of the foundation’s assets with the GHACF’s mission and goals, providing social benefits to our community by investing a portion of our portfolio in local investments.

Investment in IFF

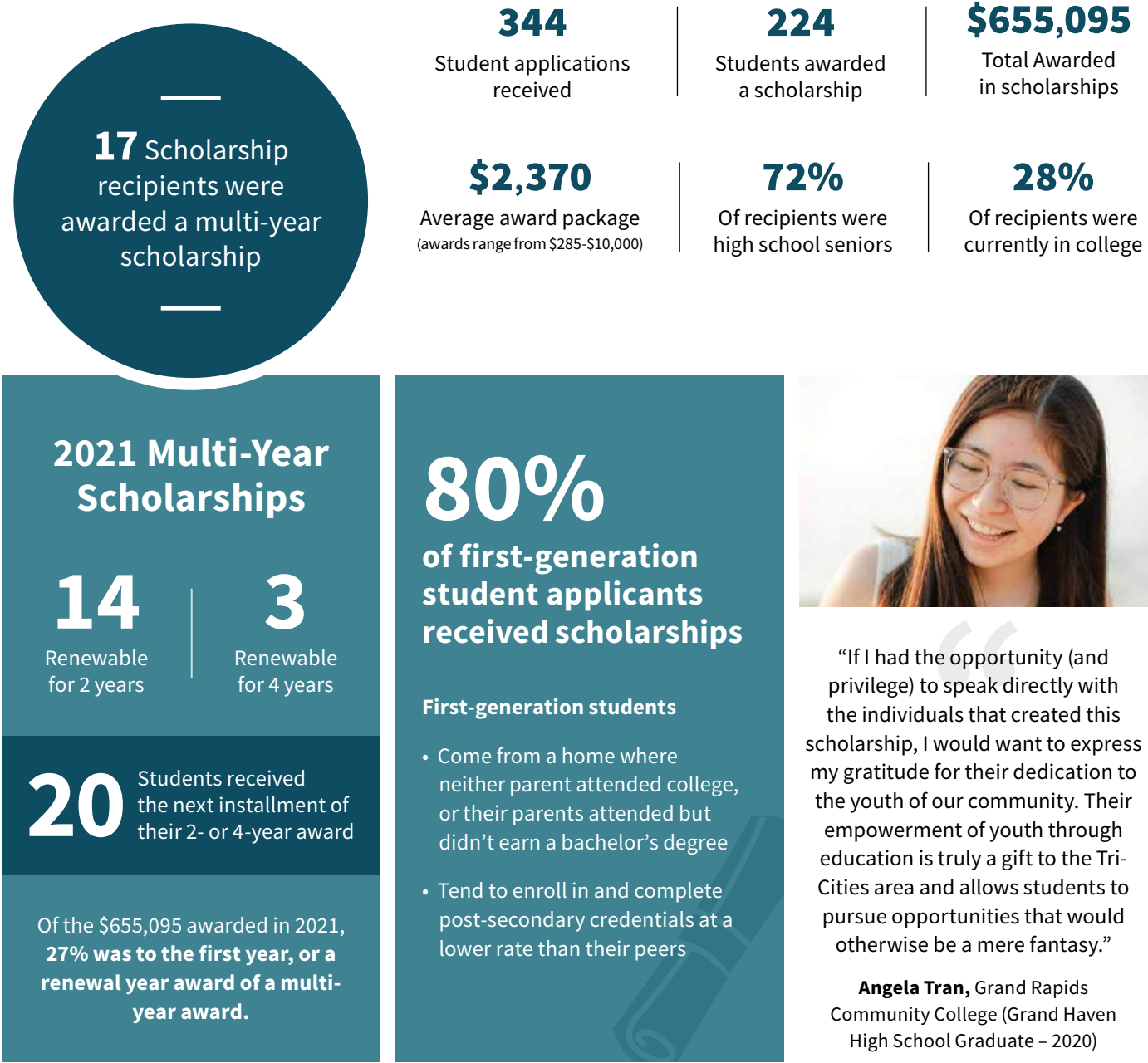
In addition to the landmark investment in MCC, the GHACF completed a second \$1.5M impact investment in IFF (formerly Illinois Facilities Fund), one of the highest-rated Community Development Financial Institutions (CDFI) in the country. The five-year investment was created to be used within West Michigan, with a particular emphasis on Northwest Ottawa County.

Robinson Landing Home Development

The \$1.5 million impact investment in MCC provided access to capital to focus on a new housing development in Northwest Ottawa County. In partnership with Housing Next, the City of Grand Haven, the Grand Haven Area Community Land Trust, and others, the Robinson Landing neighborhood was created to address the shortage in affordable housing. The neighborhood consists of 30 homes, 16 of which will remain affordable as part of the land trust.

Building the Future Through Scholarships

Thanks to our generous donors, **224 area students received a combined \$655,095 in scholarships in 2021.**





Making a difference in the lives of area youth

The Community Foundation’s Youth Advisory Council (YAC) is made up of high school students from all around the area. YAC members meet throughout the year to discuss and assess youth issues prevalent in the community, review grant proposals that benefit youth in the community, and look for opportunities to engage and empower youth in Northwest Ottawa County.

Our History

The YAC was established in 1991 thanks to a challenge grant from the W. K. Kellogg Foundation. Since then, hundreds of students have served on the YAC, and the Youth Fund has generated over \$3 million in assets. More importantly, since its inception, the program has had the privilege to grant over \$2 million to programs that address relevant, pressing issues that face area youth.

What We Value

- **Empathy:** to understand the needs of the youth in our community.
- **Integrity:** to make equitable decisions for the youth of our community.
- **Collaboration:** using innovation and teamwork.
- **Open-mindedness:** through a passionate and diverse group of youth representatives.

“I joined YAC because it is a unique opportunity to effect real and impactful change in the community. It is a chance for high-schoolers to utilize dollars to combat youth issues in our community.”

Aashray Mandala, YAC 2021 Chair,
2021 Graduate of Grand Haven High School

2021-2022

Youth Advisory Council Members



Madi Boerger



Abby Dzikowicz



Margot Frendt



Ryann Gilchrist



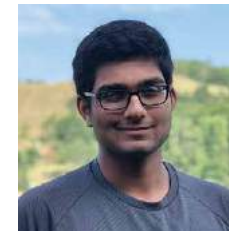
Caroline Henry



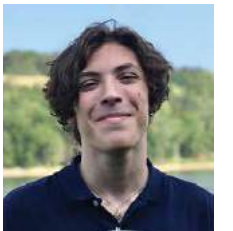
Gavin Hubner



Gideon Jones-Rikkers



Aashray Mandala



Jacob Marcus



Amerasia Miller



Lexi Naperala



Paige Peterson



Payden Pittman



Emma Radley



Kyla Streng



Clara Thelen



Brigit Vanderkolk



Sadie Williams



Elena Yu

\$99,500
14 Grants awarded by
Youth Advisory Council

Grant Priorities & Projects

Mental & Emotional Well-Being

Arbor Circle Corporation | Student Leaders Initiating Change Equity & Expansion Project

Big Brothers Big Sisters of the Lakeshore | You Belong: JEDI: Justice, Equality, Diversity, and Inclusion

Camp Sunshine | Camp Sunshine Counselor Engagement Event

Children's Advocacy Center | Therapy Room

Children's Advocacy Center | Coping Kits for Teens

Grand Haven Area Public Schools | Grand Haven High School Staff and Student Wellness Project

Grand Haven Area Public Schools | Mary A. White Aquarium Therapy

Spring Lake Public Schools | Mental Health Matters

Spring Lake Public Schools | The Chalkboard Project Sponsorship

Walden Green Montessori School | Project CARE

Wedgwood Christian Youth and Family Services | Children's Hope Annual Fund

Physical Well-Being

Mary Free Bed Rehabilitation Hospital Foundation | Jr Pacer's Wheelchair Basketball

Resilience: Advocates for Ending Violence | Resilience Prevention Program: Men as Allies

Tri-Cities Family YMCA | Safety Around Water

Giving for Impact

The grants previously featured, and the others not included in this report, are made possible because of our donors. The charitable gifts given to the foundation, year after year, ensure that our for-impact partners are able to continue their good work in our community. The types of funds at the community foundation reflect the varied interests of our fund holders and donors. Whether they are donor or committee advised, designated or unrestricted, new or longstanding, endowed or non-endowed, they are evidence of the spirit and generosity of the individuals, families, corporations, and organizations seeking to make a positive impact in our community today, tomorrow, and forever.

The following pages feature inspiring stories of new funds that were recently opened, as well as a complete list of all funds held at the foundation.

Why Give

We believe that philanthropy is unique and personal. We remain focused on, and committed to, listening, learning, and partnering with current and prospective donors, fund holders, and professional advisors to match intent and ensure that each experience is meaningful and impactful. Giving through the foundation doesn’t have to be complicated, nor does it require great wealth. A gift of any size is a valuable contribution that will help make positive, lasting change in Northern Ottawa County.

Where to Give

You may give to an existing fund, establish a new fund, establish a recurring gift, leave a bequest and/or give to our greatest needs.

By giving to the Greatest Needs Fund, you enable the foundation to address our community’s most pressing needs and promising opportunities, both now and for generations to come, through competitive grants to local for-impact partners.

What to Give

We facilitate a variety of gifts, including cash, stocks, bonds, and mutual funds, closely held stock, real estate, 401K and IRA accounts, life insurance policies, and bequests.

How to Give

To make a contribution, you may:

- Give online at ghacf.org/donate
- Mail a check to:
Grand Haven Area Community Foundation at
1 South Harbor Dr., Grand Haven, MI 49417
- Arrange for a planned gift by contacting a member of the Advancement & Donor Services team.

If you're considering a gift of appreciated stock, please contact Chris Riker, VP of Advancement & Donor Services or Patty MacDonald, VP of Finance & Administration, for questions or transfer instructions.

All Donations are eligible for Federal Income Tax charitable deduction as allowed by charitable tax law. Please consult with your professional advisor with questions regarding a charitable gift.

Types of Funds

\$5,000 minimum to open all funds, except Scholarship funds, which require \$25,000.

40

Greatest Needs Funds

Enable the GHACF to remain proactive, responsive, and flexible to our community’s most critical needs.

41

Field of Interest Funds

Connect personal values to high-impact opportunities. Allow individuals to target gifts addressing area needs.

207

Donor & Corporate Advised Funds

Allow an individual, family, or company to establish a charitable fund. Recommend grants for staff to administer.

161

Organizational Funds

Provide income streams to support programs and operations at for-impact organizations.

76

Designated Funds

Support the mission of 501(c)3 organizations by designating them as beneficiaries of the fund.

20

Community Service Funds

Enable collective giving to a singular fund that supports a community project. Typically open 1-3 years.

133

Scholarship Funds

Invest in the next generation with post-secondary education assistance. Build a foundation for a brighter tomorrow.

Greatest Needs Funds

Giving to our greatest needs fund, or establishing a named greatest needs fund, is a wonderful way to enable the Foundation to remain proactive, responsive, and flexible to our community’s most critical needs. As we say, “forever is a really long time,” and we remain committed to being an impactful funder forever.



William & Mary Creason Greatest Needs Fund

This fund was opened to continue the legacy of Bill and Mary Creason. Both held a deep love for their community, reflected in their dedication to supporting many local organizations and projects. Both were leaders, willing to put in the work to make ideas and community initiatives succeed - from downtown development to youth aviation education - fostering a better tomorrow for everyone in the community. Bill and Mary’s lifelong commitment to each other and their family, friends, and neighbors set an example for all who knew them and will live on in the good work their greatest needs fund will support now and forever.



John P. Harvey Fund

This greatest needs fund was established with an estate gift. John was a business owner, mechanical engineer, a prolific inventor, and patent holder. He also was an avid reader and loved nature. John passed away in 2015 at age 95 and thoughtfully included the Grand Haven Area Community Foundation as a recipient of a bequest. This unrestricted fund will help the foundation support the community John loved so much.

Donor & Corporate Advised Funds

Donor and corporate advised funds allow an individual, family, or company to establish a charitable fund with a single gift. Donors may add to the fund with additional gifts at any time and may remain anonymous, if desired. Donors enjoy administrative convenience, cost savings and tax advantages, and gain access to the expertise of the community foundation’s staff. Once the fund is established, donors recommend grants and the foundation’s staff does all the work of administering the grants.



Chris & Melissa Baker Fund

Chris and Melissa Baker have a long-standing history of regularly and generously supporting the nonprofit sector. This new, donor advised fund at the Coopersville Area Community Foundation will assist their family with charitable giving and provide the flexibility to support the causes personal to their family. They have included their children to encourage the spirit of giving within future generations.



John & Meghan Heritage Family Fund

Community is important to John and Meghan Heritage and supporting local philanthropy has been an important part of their lives. Together, they decided to create a donor advised fund that would allow them to recommend grants to impact local nonprofits and support community initiatives. They have included their children as fund successors to continue their tradition of giving.



Jack & Marj Meyer Family Fund

Dr. Jack and Marj Meyer were married for 53 years and raised 2 sons. Marj loved music and travel. She started her career in education and shifted careers to work with her husband to help build his podiatry practice. Marj was a very active member of the community. Her sons Jason and Mike Meyer created a donor advised fund named after their parents and in her memory to carry on their tradition of philanthropy for another generation.



J. Patrick Twa Memorial Fund

Patrick was known for his deep faith, quick wit, his wood-working passion, as well as his genuine care for others. Many knew him because of his home remodeling business and work with Tri-Cities Area Habitat for Humanity. His wife, Bobbie and sons, Adam and Ben, started this donor advised fund in his memory following his death with much support from friends and the broader community. This fund will grant Careerline Tech Center students the opportunity to learn residential skill trades. Patrick’s legacy will live on in this fund and Bobbie will eventually pass the fund granting decisions to their children.



VanWoerkom Family Fund

The establishment of this donor advised fund came through a gift from Steve Pekich, a New York resident who spent his childhood in Grand Haven. Steve started this fund to “pay it forward” in memory of his mother's family who greatly impacted his life. The philanthropic intent of this fund is to benefit organizations focused on child abuse prevention, treatment, and Christian missions.



Curt & Terri Whiting Family Fund

Curt and Terri Whiting raised their family in this area, and supporting the community has always been an important aspect of their journey. They decided to enhance their local charitable giving by creating a donor advised fund that allows them to recommend grants to nonprofits through this “charitable checking account.”

Organizational Funds

Organizational funds provide income streams to support programs and operations at for-impact organizations. Organizational funds can be a simple and effective way to create long-term financial sustainability. The foundation holds and invests the assets, providing responsible and professional fund management.



Casa de Esperanza Ministries Non-Endowed Fund

This organizational fund will assist Casa de Esperanza, a local faith-based organization created to bring hope to the country of Honduras through education. Translated as “House of Hope,” Casa de Esperanza seeks to promote self-sufficiency and spiritual growth through supportive housing, training, and skills development. They assist with medical care and provide basic construction services.



City of Grand Haven Snowmelt Preservation Fund

The City of Grand Haven opened this new fund to support the ongoing maintenance and operations of the snowmelt system within the Downtown Development Authority District of the City of Grand Haven. By establishing and maintaining this fund with the community foundation, interested donors may contribute toward sustaining this asset and because the fund is invested, the assets will grow over time.



Four Pointes Non-Endowed Fund

Four Pointes Center for Successful Aging exists to promote the vitality, independence, and well-being of older adults in North Ottawa County. This for-impact partner created a non-endowed organizational fund to provide an additional way to support programs and operations.



Grand Haven Christian School Endowed Technology Fund

Grand Haven Christian School educates minds and shapes hearts for service to God. The school is working to improve their technology and opened this organizational fund to update computers, software, as well as other technology in the computer lab, and to purchase new devices to support classroom activities. This new fund will allow the school and others to contribute specifically to this cause.



Homeless Prevention Partners Endowment Fund

A group was formed in 2004 in conjunction with the Housing Coalition and held an annual fundraising event, Soup For All. The group became a nonprofit organization to provide funds to fight homelessness year-round. Homeless Prevention Partners raises funds for area nonprofit organizations and disperses them through a grant application process to directly help homeless students and families, provide utility and rent assistance for emergency situations, and fill food pantries. The funds held in this organizational fund will help Homeless Prevention Partners grow their mission.



Loutit District Library Non-Endowed Fund

Libraries often require a variety of funding streams to support their operations, but modern libraries are no longer just homes for books. Loutit District Library meets community needs in nontraditional ways as well. Among its many services, Loutit District Library presents educational programming for all ages, circulates WiFi hotspots and laptops, and preserves the rich history of the Grand Haven area. The library created this organizational fund to help secure its financial future and to continue innovating to meet public demand. Anyone can give to this fund to support the programs and services of the library.



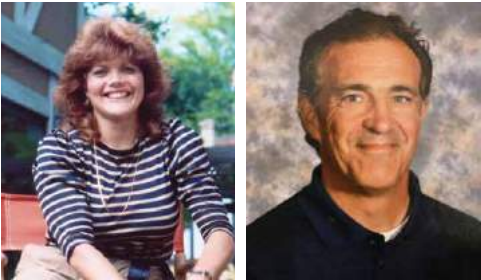
Love in Action Tri-Cities Non-Endowed Fund

The creation of this organizational fund will allow Love in Action to continue empowering people to thrive in the Tri-Cities. Love in Action is a ministry that works with a network of church partners, corporations, volunteers, and organizations to help neighbors in need by providing food, clothing, medical care, shelter, and other services.



NE Ottawa Firefighters Collaborative Fund

The NEOFC was formed in 1999 by four area fire departments: Allendale, Chester Twp. (Conklin), Coopersville/Polkton and Wright/Tallmadge (Marne). This nonprofit serves the community by aiding the local fire departments and by teaching fire prevention and safety to the public. This organizational fund will help supply the fire departments with needed items.



Westra Bye Memorial Art Foundation Non-Endowed Fund

The Westra Bye Memorial Art Foundation was founded in memory of Donna Westra and Robin Bye, two art teachers beloved by their students and colleagues. This organizational fund will help provide financial and educational support for Grand Haven Area Public School students who are pursuing a post-secondary visual arts education.

Designated Funds

Designated funds support the mission of 501(c)3 organizations by designating them as the beneficiaries of the fund. Designated funds provide a steady, long-term source of income for one or more nonprofits or community initiatives. Almost any 501(c)3 nonprofit organization may be designated to receive support for its mission.



Victor Gouveia Memorial Fund

Victor Gouveia loved working on cars and motorcycles and fishing. He worked in the auto body trade and was known as an impactful mentor. His friends and family started this designated fund in his memory to purchase tools for deserving Careerline Tech Center students or to financially support student certifications and/or accreditations.

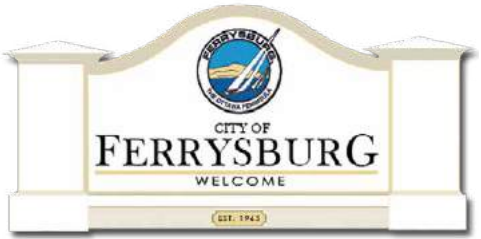


Coach David Prout Soccer Excellence Award Fund

David Joseph Insoo (Joe) Prout was a devoted family man, high school and college athlete, Ottawa County Sheriff’s Deputy, and beloved high school soccer coach. He passed away from stomach cancer at age 50. Coaching was always about more than soccer for Dave, and he enjoyed watching his players find success on and off the field. Coach Dave Prout’s contributions to our West Michigan soccer community will never be forgotten and will live on through the hundreds of players he coached. Dave’s players found higher levels of success on the field because he taught them to look for reward in honoring the game and playing with the passion it demands. His friends and family started this fund to recognize a deserving senior Grand Haven High School soccer player. The ideal recipient will have diligently studied the sport and perfected the technique, is team-oriented, has good sportsmanship, and is hardworking.

Community Service Funds

Community service funds are typically short-term funds that enable collective giving to a singular fund that supports a community project. These funds are not invested.



Fire Barn Park Fund

The City of Ferrysburg opened this community service fund to enhance and care for Fire Barn Park. This small community park is located on the corner of North Shore Drive and 174th Ave in Ferrysburg. It consists of biking paths, tennis courts, basketball court, soccer field, picnic area, playground and a baseball and softball field. This fund is initially intended to be a short-term and project specific fund to raise resources from the community.

Scholarship Funds

Scholarship funds make educational dreams come true. When you invest in the next generation with post-secondary education assistance through scholarships, you’re building a foundation for a brighter tomorrow.



David & Carol DeBlaey Scholarship Fund

David and Carol’s love of the community is evident through their many volunteer leadership roles over the years within the community and the establishment of a second fund at the community foundation. The David & Carol DeBlaey Scholarship Fund will annually support a talented graduate from Grand Haven High School who is experiencing financial need. David and Carol previously started the DeBlaey Greatest Needs Fund and are members of the Legacy Society to ensure a lasting impact on the well being of our community.

Designated Funds

Allendale Christian School Tuition Assistance Fund

Allendale Lifelong Learners Fund

Alpha Fund

Janet C. Beukema Fund for Hospice

Martin-Beverley-Todd Bomers Memorial Band Fund

Martin-Beverley-Todd Bomers Memorial Fitness & Aquatic Center Fund

Boomgaard Fund for Seniors

Dan Burt Designated Fund

City of Coopersville Recreation Fund

City of Grand Haven Memorial Airport Fund

Thomas N. Cooper Designated Fund

Coopersville Old Kids Fund

Doug Corradini Spirit of #40 Fund

Alex Crum Memorial Fund

Russell H. & Beatrice A. Dornbos Fund

Mark & Lauri Douglas Community Arts Fund

Arno & Judith L Driedger Fund

Dykstra Family Music Fund

Scott Fredricks Fund

E. Selena Gerig & John J. Gerig Fund

Victor Gouveia Memorial Fund

Grand Haven Area Public Schools

Janet R. Briegel Designated Fund

Patrick Byrne Memorial Fund

Ronny Kemink Pay to Play Fund

Judy Corcoran Porath Memorial Fund

Cindy Schember "I Love to Read" Endowment Fund

Grand Haven Class of 1953 Fund

Norma V. Green Memorial Art Award

Carol & Winfield Hall Fund for Music

Coral & Peter Hanenburg Memorial Fund

Chuck & Olga Hennesen Fund

Olga A. & Charles J. Hennesen Family Fund

Hill Family Children's Christian Education Fund

Edward & Florence Huizenga Fund

Jocki Klischan Fund

Keith & Bernice Lamkin Fund

Casey Lemieux Fund

Norm & Meg LeMieux Designated Fund

The Robert & Karen Lemmen Children's Fund

Love J. P. Fund

Robert M & Joyce M Lynas Designated Fund

Mosaic

Mosaic Counseling Fund

Mosaic Counseling Fund for Children and Their Families

O'Neill Family Fund

Challenge of Children Fund

George & Nadaire Pardee Fund

The Patterson Family Foundation Fund

Clarence & Bernice Piersma Endowment Fund

Dr. Larry Poel Sports Medicine Fund

Vernon Poest & Roberta Gnerich Poest Designated Fund

Coach David Prout Soccer Excellence Award Fund

Reel Perspectives Fund

Ellna Rotman Camp Fund

Lloyd & Marlene Rotz Designated Fund

Sheridan Park Fund

Lynne Sherwood Fund for Greater Ottawa County United Way

Roy L. & Karen L. Shields, Jr. St. John's Lutheran Church Endowment Fund

Robert & Janice Sluka Fund

Spread the Music Foundation Fund

Spring Lake Christian Reformed Church Mission Endowment Fund

Spring Lake District Library

Spring Lake District Library Restricted Endowment Fund

Spring Lake District Library Outdoor Beautification Fund

Needham Teacher Grant Fund

Marian R. Stevens Fund

St. John's Episcopal Church Altar Guild Fund

Rotary STRIVE Designated Fund

Struyk Up the Band Fund

Harlind Throop Memorial Christmas Fund

Donald & Elaine Twiss Fund

Bill & Nanci Tysman Designated Fund

Mary "Meime" vandenBerg Fund

David A. West Spirit of the Band Award Fund

Samuel L. Westerman Sunshine Fund

Ruth Wierenga Ghana Fund

Donald & Monica Zahm Memorial Fund

Jean H. Zukowski Designated Fund

Organizational Funds

ABC Coalition Fund

Allendale Charter Township

Allendale Charter Township Parks and Recreation Fund

Veteran's Memorial Fund

Allendale Christian School Endowment Fund

Allendale Historical Society Endowment Fund

Allendale Public School Foundation

Allendale Township Library Endowment Fund

American Red Cross, Ottawa County

American Red Cross Founding Fund

American Red Cross of Ottawa County Fund

Doris Ewing Red Cross Disaster Relief Fund

Bluebird Cancer Retreats

Bluebird Cancer Retreats

Cynthia Collinge-Golab Volunteer Support Fund

Rosemarie Konopa Cancer Retreat Program Fund

Borculo Christian School Education Foundation

C3/Exchange

C3 West Michigan's Inclusive Spiritual Connect Memorial Cap Fund

C3 West Michigan's Inclusive Spiritual Connection Designated Non-Endowed Fund

C3 West Michigan's Inclusive Spiritual Connection Endowment Fund

Camp Sunshine Endowed Fund

Casa de Esperanza Ministries Non-Endowed Fund

Central Park Players Endowment Fund

Chester Township Recreation Fund

Children's Advocacy Center Endowment Fund

Church of the Saviour Fund

City of Coopersville

Coopersville Area Historical Society Building Fund

Coopersville Area Historical Society Endowment Fund

Michael's Gift

Roundabout Non-Endowed Organizational Fund

Silent Observer Fund

City of Ferrysburg

Kitchel-Lindquist-Hartger Dunes Endowment Fund

Kitchel-Lindquist-Hartger Dunes Fund

City of Grand Haven

4th of July Fireworks Fund

7th Street Coast Guard Boat Fund

Boardwalk Maintenance Endowed Fund

Catwalk Maintenance Fund

City of GH Cemetery Perpetual Care Fund

City of Grand Haven Asset Protection Fund

City of Grand Haven Musical Fountain Fund

City of Grand Haven Snowmelt Preservation Fund

Coal Tipple Restoration Fund

Duncan Park Fund

GH Memorial Airport Immediate Needs Fund

Grand Haven Boardwalk 25th Anniversary Fund

Grand Haven Central Park Fountain Endowed Fund

Grand Haven Lighthouse Fund

Grand Haven Public Safety Beach Safety Fund

Grand Haven Rotary Splash Park Fund

Grand Haven Waterfront Stadium Fund

Imagination Station Maintenance Fund

Linear Park Sculpture Park Fund

Mulligans Hollow Ski Bowl Cap Improve Fund

Officer Scott A. Flahive Memorial Fund

Pier Safety Fund

Public Artifact Preservation Fund

Public Artifact Preservation Non-Endowed Fund

Coast Guard Festival, Inc.

Coast Guard Festival Fireworks Forever Fund

Grand Haven Coast Guard Festival Fireworks Fund

Midge Verplank Coast Guard Fireworks Fund

Coopersville Area District Library

Coopersville Area District Library Memorial Fund

Robert & Judy VanDongen Fund

Westrate Children's Library Endowment Fund

Coopersville Area Public Schools

CAPS Peforming Arts Center Endowment Fund

Coopersville Area Public Schools Athletic Fund

Coopersville Education Fund

Coopersville Cares Endowment Fund

Coopersville Reformed Church Fund

Coopersville Farm Museum, Inc. Fund

FFA Agricultural Education and Leadership Fund

Covenant Life Church Endowed Fund

Crockery Township Fire Department Endowment Fund

Family LIFE Center of West Michigan

First Christian Reformed Church

Grand Haven First Christian Reformed Church

Grand Haven First Christian Reformed Church Non-Endowed Fund

First Presbyterian Church of Grand Haven

Karin Fowler Pastoral Care Training Fund

Memorial Mission Fund

Omega Fund

Four Pointes Center for Successful Aging

Four Pointes Endowed Fund

Four Pointes Non-Endowed Fund

Gail Ringelberg Special Needs Fund for Four Pointes Non-Endowed Fund

Janet R Briegel Non-Endowed Fund for Four Pointes

Girl Scouts of Michigan Shore to Shore Endowment Fund

Gracious Grounds Endowment Fund

Grand Haven Area Public Schools

Eugene "Gene" Rothi Memorial Athletic Endowment Fund

GHAPS Orchestra Endowment Fund

GHHS Choir Endowment Fund

Jan Rempinski Memorial Scholarship Fund for Vocal Music

Grand Haven Christian School

Grand Haven Christian School Endowed Technology Fund

Grand Haven Christian School Tuition Assistance Fund

James & Wendy Onderlinde Family Fund for GHCS

Kirsten Terborg GHCS Tuition Assistance Mem Fund

Richard & Rosemary Geertsma Fund for GHCS

Grand Haven Schools Foundation Endowment Fund

Greater Ottawa County United Way, Inc. Volunteer Center Designated Fund

Volunteer Center Endowment Fund

Harbor Humane Society Endowment Fund

Homeless Prevention Partners Endowment Fund

Homelessness Prevention Endowment Fund

Humanity for Prisoners

Humanity for Prisoners Endowment Fund

Humanity for Prisoners Legacy Fund

International Aid Endowment Fund

Lakeshore Baptist Church Fund

Lamont Christian School Foundation Fund

Land Conservancy of West Michigan Fund

Lakeshore Ethnic Diversity Alliance Endowment Fund

Kenneth Ranta Fund for The Little Red House

Loutit District Library

Loutit District Library Endowment Fund

Loutit District Library Non-Endowed Fund

Love In Action

Love in Action of the Tri-Cities Fund

Love in Action Tri-Cities Non-Endowed Fund

Paul & Minnie Luytjes Fund for Second Reformed Church

Michigan Aviation Education Foundation

Michigan Aviation Education Foundation/Fontana Fund

Michigan Aviation Education Fund

Midwest Miniature Museum Non-Endowed Fund

Mary Ann Sherwood Fund for Mosaic Counseling

Muskegon Museum of Art

Muskegon Museum of Art Capital Campaign Fund

Muskegon Museum of Art Endowment Fund

NE Ottawa Firefighters Collaborative Fund

North Ottawa Amateur Radio Club

North Ottawa Community Health System

Mary's Wish Hospice Fund

Samuel L. Westerman Nursing Education Fund for NOCH

NORA - Chris Christiansen Youth Scholarship Fund

Ottawa Area Intermediate School District

OAISD Roerink Visual and Hearing Impaired

OAISD Special Education Fund

Miles of Smiles Endowment Fund

Ottawa County Parks & Recreation Department

Ottawa County Parks Nature Education Center Endowment Fund

Ray & Alma Statema Park Stewardship Fund

Ottawa County Parks Foundation Inc

People Center Endowment Fund

Reach for Recovery Endowment Fund

R.E.A.D. Endowment Fund

Remembrance Reformed Church

Remembrance Church Endowment Fund

Remembrance Church Non-Endowed Fund

Resilience: Advocates for Ending Violence Fund

Senior Resources of West Michigan Endowed Fund

Mulligan's Hollow Ski Bowl Association

Ski Bowl Designated Endowment Fund

Ski Bowl Immediate Needs Fund

Spring Lake Christian Reformed Church Endowment Fund

Spring Lake District Library Endowment Fund

Spring Lake Junior Golf Association Fund

Spring Lake Junior Sailing Association

Spring Lake Junior Sailing Association Endowed Fund

Spring Lake Junior Sailing Assoc. Immediate Needs Fund

Spring Lake Presbyterian Church Memorial Trust Fund

Spring Lake Public Schools Foundation

Carol Martin Fund for Spring Lake Schools Foundation

Spring Lake Schools Foundation Fund

Spring Lake Township Parks & Recreation Fund

Tri-Cities Family YMCA

Pete Hill Fund for Y Kids

YMCA Endowment Fund

Tri-Cities Area Habitat for Humanity Endowment Fund

Tri-Cities Historical Museum

Drake-Middlemist Heritage Fund

Tri-Cities Historical Museum Fund

Tri-Cities Historical Museum Non-Endowed Fund

Tri-Cities Strikers Soccer Club Endowment Fund

United Methodist Church of Coopersville Memorial Fund

Summer Concert Series Endowment Fund

Walden Green Montessori Endowment Fund

West Michigan Academy for Arts and Academics Endowment Fund

West Michigan Agricultural Education Center Fund

West Michigan Symphony Endowment Fund

Westra Bye Memorial Art Foundation Non-Endowed Fund

Wetland Watch Environmental Education Fund

Wright Tallmadge Firefighters Assoc. Fund

Scholarship Funds

Allendale Chamber of Commerce Scholarship Award Fund

Allendale Community Foundation Scholarship Fund

Jack Feldt Ambucs Memorial Fund

Athena Scholarship Fund
Bailey Scholarship Fund
Lindsey Bakale Memorial Scholarship Fund
Ray & Sue Barrett Scholarship Fund
Charles (Charlie) A. Bassett Endowed Scholarship Fund
Richard & Annette Bethke Education Fund
George Bitner Scholarship Fund
Martin-Beverley-Todd Bomers Memorial Scholarship Fund
Chris Bradley Endowed Memorial Scholarship Fund
Janet R. Briegel Scholarship
James W. Jr. & Jane T. Brown Fund
Jack & Libby Bush Scholarship Fund
Ronald C. Bush Memorial Scholarship Fund
David & Mary Jo Busman Family Scholarship Fund
Careerline Tech Center Paraprofessional Scholarship Fund
Staci Cheadle Memorial Scholarship Fund
Geri Coccodrilli Culinary Scholarship Fund
Coopersville Scholarship Fund
Craig Councilor & Valerie Guttowsky Scholarship Fund
Alex Crum Scholarship
Dake Community Manufacturing Scholarship Fund
David & Carol DeBlaey Scholarship Fund
Detter Family Foundation Education Scholarship
Detter Family Foundation Leaders in Mathematics and Science Scholarship
Ken & Barb DeWitt Scholarship Fund
David Day Eppelheimer Fund
Erickson Education Fund
Kevin Ernst Memorial Scholarship Fund
Wallace K & Jane Ewing Scholarship Fund
Bertha M. Fase Memorial Scholarship Fund
Scott A. Flahive Memorial Scholarship Fund
Floto-Peel Family Fund
Kenneth & Janis Formsma ESL Scholarship
John L. & Victory E. Frantz Scholarship Fund
Fugazzotto Scholarship Fund for Visual Arts Students
Wilma Jean Fyneweaver Nursing Scholarship Fund
Gauthier Family Fund
Tom Gifford Scholarship Fund
GHACF Scholarship Fund
Grand Haven Offshore Challenge Scholarship
Barbara & Nicole Heacox Foreign Study & Travel Fund
S. J. Hecksel Memorial Scholarship Fund
Marjorie M. Hendricks Environmental Education Fund
Michael Herman Scholarship Fund
Mitz Hammond Hessmer Scholarship Fund

Hierholzer-Fojtik Scholarship Fund
J. R. Hilliard Memorial Scholarship Fund
Vernon J. & Shirley M. Hipwell Family Music Scholarship Fund
Hoffman Family Scholarship Fund
Hofma Scholarship Fund
Dale Janke Scholarship Fund
Seth Koehler Central High School Fund
Paul J. Laninga Memorial Scholarship Fund
Larson - Veneklasen Outdoor Education Scholarship
Rick & Beverly Lattin Education Fund
Laughlin Family Scholarship Fund
Jack W. Leatherman Family Fund
Leitner Family Fund
Casey LeMieux Central-Mary A. White Schools PTA Fund
Loutit Foundation Scholarship Fund
Friends of Loutit District Library
Pat & John MacTavish Fund
Mandy's Promise Scholarship
Ross McBride Scholarship Fund
Mary E McGinnis Social Work Scholarship Fund
Randal & Marilyn Mergener Scholarship Fund
David James Merkle Memorial Scholarship Fund
Kyle Moreland Memorial Scholarship Fund
Melissa Skiera Myers Scholarship Fund
Nelson Family Scholarship Fund
North Bank Scholarship Fund
North Ottawa Hospital Auxiliary Fund
Alyssa Olafson Memorial Scholarship Fund
Roy & Joyce Overway Family Fund
Marvin R. & Pearl E. Patterson Family Scholarship Fund
P.E.O. Chapter DS Scholarship Fund
Dr Larry Poel Field of Medicine Scholarship Fund
Edward & Barbara Post Family Scholarship Fund
Terry Linda Potter Scholarship Fund
David & Mary Race Vocational/Technical Scholarship Fund
Richard & Barbara Race Scholarship Fund
David A. Reeves Scholarship Fund
Frances Claire Reinecke Scholarship Fund
Jacob L. Reinecke Memorial Scholarship Fund
Daniel L. Reiss Memorial Scholarship Fund
Harold & Eleanor Ringelberg Scholarship Fund
Charles Robertson Scholarship Fund for Education
Runschke Family Scholarship Fund
Charles & Eleanor Rycenga Education Fund
Millicent Mary Schaffner Endowed Memorial Scholarship Fund
David & Jinny Schultz Family Fund
David & Sharon Seaver Family Scholarship Fund in Memory of Timothy D. Seaver
Del Shannon Memorial Scholarship Fund
Ken & Sandy Sharkey Family Scholarship Fund

Susan Shattuck Scholarship for Future Nurses
Lynne Sherwood Scholarship Fund
Marion A. & Ruth K. Sherwood Business Scholarship Fund
Marion A & Ruth K Sherwood Current College Scholarship Fund
Marion A. & Ruth K. Sherwood Education Scholarship Fund
Marion A. & Ruth K. Sherwood Engineering Scholarship Fund
Marion A. & Ruth K. Sherwood Medical Scholarship Fund
Marion A & Ruth K Sherwood MI Coll Alliance Scholarship Fund
Miller G. Sherwood Family Scholarship Fund
Maryadele Sparks Scholarship Fund
Spartanwill Scholarship Fund
Spring Lake High School Social Studies Prize
St. John's Lutheran Chruch and School Scholarship Fund
St. Patrick's & St. Anthony's Church Scholarship Fund
GH Rotary / Lynne Sherwood STRIVE Scholarship
Frank & Virginia Such Memorial Scholarship Fund
Edward P. Suchecki Family Scholarship Fund
Henry D. & Ruth G. Swartz Family Fund
Clifford & Hope Taylor Scholarship Fund
Grace Thatcher Scholarship
H. Wayne VanAgtmael Cosmetology Scholarship
Lorraine VanBeukering Scholarship Fund
Marv VandenBosch Scholarship Fund
VFW Post 2326 Ward-Goff Memorial Scholarship Fund
Louise Wachter Wickham Scholarship Fund
Bob Warren & Carole Curry-Warren Scholarship Fund
Waters' Family Scholarship Fund
Valerie Watson Scholarship Fund
West Michigan Nursery & Landscape Association Scholarship Fund
Mary E. Wilsberg Scholarship Fund
Paul Wolbrink Scholarship Fund
Women's Club of Grand Haven Scholarship Fund
Daryn Renee Worpel Scholarship
Herman J. & Helen Wyngarden Memorial Scholarship Fund
Zenko Family Fund
Leo Zupin Memorial Scholarship Fund

Leaving A Legacy

Thank you to those who have chosen the community foundation as a way to enhance the community for future generations through a planned gift. Leaving a gift to the community foundation allows individuals to support the causes that they are most passionate about forever.

Beginning with 59 members in 2003, the Legacy Society has grown to more than 330 individuals today. It is because of that generosity that Northern Ottawa County remains a wonderful place to live, work, and play – and will remain for future generations.

We created this special section to honor those legacies that have been realized over the past year (June 2021-March 2022). We would also like to acknowledge the recent passing of the following Legacy Society Members: Sue Ellen Hinkle-Barrett, Nancy Dornbos Rhem, and Richard Scholler. We plan to honor and recognize their legacies in a future publication.



Muriel Mersereau

Muriel Mersereau lived a life full of love for her family, her community, and new experiences. Muriel was a lifelong community member of Grand Haven. Her passion for life and dedicated service allowed her to explore many walks of life and areas of the world. She continuously befriended countless individuals, learned new skills, and most importantly helped others. Muriel’s philanthropy was people centric, reflected in her international mission trips and long history of charity in memory of others. She devoted her life to truly understanding and embracing everyone she met with love and warmth. Muriel impacted numerous lives with her generous spirit and boundless love for all the world has to offer.



Gerald Retzlaff

Gerald “Jerry” Retzlaff connected with every part of our community. He was not only a leader of a local business, but also dedicated his time to a variety of nonprofit organizations and local initiatives like International Aid and the Committee of Economic Development. His work was always community oriented and centered on supporting others and the Grand Haven area. Jerry lived an authentic life, welcoming to all who met him, and was a man who cared deeply for his friends, family, and community. Jerry’s memory will live on through the individuals who loved him and the organizations his legacy will continue to support.



Patricia Shears

Patricia “Pat” Shears committed wholeheartedly to supporting her community and neighbors in everything she did. Her love was unconditional and all encompassing. She held a great passion for philanthropy within the community, becoming the first woman president of the Tri-Cities Kiwanis Club. Her energetic and kind spirit was inviting to anyone who met her and reflected her deep love for all life had to offer. Pat’s impact within the community was one of kindness and genuine warmth. Her ability to celebrate the joy of living through her every day actions will continue to be visible within our community for years to come thanks to her support of our children’s future through continued education.



Peter Theune

Peter Theune lived a life devoted to helping others. He was a local leader, full of kindness and passion, who cared deeply for his community. He played a pivotal role in the establishment of The Little Red House, The People Center, and Bluebird Cancer Retreats – organizations that continue to serve our area today. Peter held a great love for everyone around him, especially his family, as well as the world’s natural beauty – and his actions reflected this. His dedication to supporting the community was a lifelong effort that continues to impact countless individuals, families, and organizations.

Legacy Society Members

If you would like more information about joining the Legacy Society, please contact Chris Riker.

| | | | |
|-------------------------------------|----------------------------------|----------------------------------|---------------------------------------|
| Tom Alguire | Martha Erickson | Mike McKeough | Gary & Karen Sherwood |
| Donald & Cindy Anderson | Janet Ernst | Nina McKeough-Reed | Karen Shields |
| Len & Wanda Anderson | Jon & Glenda Eshleman | Larry & Anne McLaughlin | Dorothy Sikkema |
| David Baas | Steve & Mary Jane Evink | Damon & Kim McLaughlin | Gerald & Linda Slagel |
| Paula B. Baas | Wallace & Jane Ewing | Douglas McNeil | Robert E. & Janice D. Sluka |
| William & Mary Baker | Patricia Fisher | Sandra & Frank Mercurio | Gary & Jorri Smith |
| Steven & Kathryn Bandstra | John & Kathryn Fortino | Robert J. & Donnell S. Mersereau | Julie Smydra |
| Charlie & Mary Jo Bassett | Patrick & Robin Fraker | Jean Fisher Mesler | Linda S. Shores & R. Michael |
| Charles (Chad) Bassett II | Barbara Fugazzotto | Nancy E. Middlebrook | Snodgrass |
| Paul Bedient | Edward "Tony" Gage | Dr. James Moore & | Rick & Mary Ann Snyder |
| William & Carolyn Benes | Rob & Jill Garrison | Patricia Eddington | Larry & Stephanie Staab |
| Carroll & Dottie Bennink | Tom Gifford | Phyllis A. & Darell L. Moreland | Tyler M. Stafford |
| Patrick S. Berg | Edward & Laura Grafton | Steven & Sandra Moreland | James J. & Sheila G. Steffel |
| Jeff & Tammy Beswick | Randy & Nancy Grevel | Evelyn Morford | Peter & Carolyn Sturuss |
| Susan & Mark Blauvelt | Edward & Nancy Hanenburg | Donald Moss | Kent & Bonnie Suchecki |
| William & Katherine Blessing | Janet A. Harestad | Peter & Sheila Murdoch | Ruth Suchecki |
| Mary Jane Boettcher | Steve & Tami Harvey | Nancy & Charles Nagtzaam | Dennis & Carol Swartout |
| Norm & Carolyn Boeve | Shirley Hipwell | John & Kathryn Nash | Dan & Ann Tabor |
| T. Arnold & Lynne Boezaart | Andy & Alice Hoban | Raymond F. & Barbara J. Nelson | Philip & Mary Kay Taylor |
| Calvin & Evelyn Bosman | Bud & Charyn Hoffman | Matthew M. & Kathryn E. | James Teitsma |
| Barbara Boyer | Stephen & Joy Hohmeyer | (Jerovsek) Olds | Ken and Mary Terpstra |
| Tom Braciak | Judith W. Hooyenga | Greg Oleszczuk & Jeanine | Guy & Alisha Terrill |
| Patricia K. Briegel | Jim & Deb Hovinga | Taghon-Oleszczuk | Judy Theune |
| Budd & Melinda Brink | Paul & Diana Hugo | James & Ruthann Olthoff | Janet Tomhave |
| James & Jane T. Brown | Sherry Jackoboice | Roy & Joyce Overway | Joseph & Carol Uridil |
| Fred Bruhn | Tom & Barb Jackoboice | Jill & Tim Parker | Edith VanBurgal |
| John & Claire Bryson | Mary Jacobson | Dan & Eileen Paull | Donna vandenBerg |
| Cheri & Ron Bultje | Nelson & Lana Jacobson | Elizabeth Peel | John Vander Kooi |
| Kevin Carbary & Carol Alexander | Nancy Jacobson Bueche | Thomas C. Pegg | Marianne VanEenenaam |
| Nancy Carlyle | Bari S Johnson | Steve Pekich | Dale & Susan VanZantwick |
| Cyndi Casemier | Holly & Erick Johnson | Anita Pellegrom | Elinore "Norna" Verplank |
| Stacey Cassis & Arianna Morales | Dorothy "Dottie" Johnson | Matthew & Joyce Pellegrom | L. J. "Midge" Verplank |
| Joe & Cheryl Clark | Roger & Susan Jonas | Marsha Peterson | Tony & Monica Verplank |
| Margaret Coffey | Jeff & Kellie Jullie | John & Mary Planteroth | Ken & Sherri Vis |
| John Cook & Jane E. Leonard | Aurthur & Janice Kanine | Larry Poel | Margot L. Van Dis & Jeffrey R. Miller |
| Craig Councilor & Valerie Guttowsky | James & Mary Keating | Craig & Coreen Porter | Robert & Deborah Wagenmaker |
| Harold "Pete" & Cindy Crane | Katherine L. Keck | Edward & Barbara Post | David & Patricia Walborn |
| Kennard & Wendy Creason | J. Gregg & Mary Keeton | Shirley A. & Ted A. Poulton | Ruth Wallinga |
| Thomas & Michelle Creswell | Jack & Joanne Kelley | Joseph & Nancy Prinzi | Walt & Daphne Weber |
| Scott Curtis | Sanford "Mark" & Kristine Kelley | Bill & Aileen Redeker | Amy L. West |
| David & Carol DeBlaey | Barbara Kelso | Field Reichardt | Andrew Wheeler |
| Terry & Sandi DeGroot | Phil & Jane King | Rosanne M. Reiss | Curtis & Terri Whiting |
| Daniel & Brenda DeVeau | Thomas & Kimberly Kitchen | M. Gary & Pennie Robertson | David & Mary Whiting |
| Barbara DeWitt | Dave & Sandy Klaassen | Lloyd Rotz | Annette Whitney |
| Ralph DeYoung | Kurt & Jennifer Klaassen | Sylvia & Ron Ruscett | Nancy & Warren Wildeman |
| Virginia Dornbos-Rolstone | Mark A. & Elizabeth Kleist | Robert & Bobbi Jones Sabine | Leslie Wills |
| James A. & Dulce Doss | Raymond & Betsy Komray | Dan & Carol Scanlan | Paul Withun |
| Megan & Jamie Doss | Keith & Patricia Konarska | James Schmidt & Karen West | David & Karen Young |
| Joyce Draft | Scott & Madonna Kramer | Carol Scholler | Rosemary A. Zink |
| Dennis & Barbara Dryer | Ken Lahey | David & Jinny Schultz | Michael & Sasha Zolik |
| Gloria Durkee | Keith & Bernice Lamkin | David & Sharon Seaver | Douglas & Janice Zuidema |
| Myrna Duthler | Tom & Jackie Laughlin | Kenneth & Sandra Sharkey | Marian Zupin |
| Jim & Marla Dykstra | Philip M. & Betty J. Leech | William & Susan Shattuck | |
| Nancy Dzierzawski | James & Nancy MacLachlan | John Shears | |
| David & Mary Eagin | Angelo & Laura Marasco | Budge & Marilyn Sherwood | |

Investing for Impact

It is our goal to invest for growth over the long term and achieve a rate of return that allows us to meet or exceed our spending rate. We recognize the long-term return benefits of an equity-oriented asset allocation accompany the trade-off of increased levels of short-term portfolio volatility. We are an endowment organization. Therefore, our investment timeline is forever. We aim to preserve the principal gifts made to our endowments, grow those gifts over time, and maintain a prudent, conservative, spend rate.

Audited Financial Statement

Through December 31, 2021

Effective stewardship of philanthropic assets is paramount to building permanent charitable funds that strengthen our community.

| ASSETS | |
|---|---------------|
| Cash & Equivalents | \$3,578,793 |
| Investments | \$181,601,387 |
| Programmatic Investments | \$3,000,000 |
| Notes Receivable | \$77,467 |
| Other Assets | \$3,534 |
| Property & Equipment | \$1,231,099 |
| Total Assets | \$189,492,280 |
| LIABILITIES | |
| Accounts Payable | \$23,106 |
| Grants Payable | \$348,359 |
| Charitable Gift Annuities Payable | \$107,602 |
| Funds Held as Agency | \$11,986,340 |
| Total Liabilities | \$12,465,407 |
| Net Assets without Donor Restrictions | \$177,026,873 |
| Total Liabilities & Net Assets | \$189,492,280 |

Communities Doing Their Part

The Grand Haven Area Community Foundation has two affiliate community foundations, the Allendale and Coopersville Area Community Foundations, and each serves the unique needs of those communities in Northern Ottawa County. Together, we collaborate to address challenges and opportunities collectively.

The following section recognizes the incredible work accomplished by the Allendale Community Foundation and the Coopersville Area Community Foundation in 2021. It also highlights the people who volunteer to serve on various GHACF committees, the GHACF board and those who make up the GHACF team.

2021-2022 Committee & Advisors

Board Roster

Barb VanHeest, Chair
Mark Pereira, Vice Chair
Keith Konarska, Secretary
Anil Mandala, Treasurer
Cindy Anderson
Mary Carole Cotter
Nelson Jacobson
Natalia Kovicak
Dave Swain
Pat VerDuin
Shirley Woodruff

Executive Committee

Barb VanHeest, Chair
Cindy Anderson
Keith Konarska
Anil Mandala
Mark Pereira

Governance Committee

Barb VanHeest, Chair
Cindy Anderson
Chad Bush
Keith Konarska
Anil Mandala
Mark Pereira

Investment Committee

Shirley Woodruff, Chair
Rob Peel
Mark Pereira
Abby Selby
David Swain

Impact Investing Sub Committee

Anil Mandala, Chair
Tammy Bailey
Tom Boven
Nelson Jacobson
Deborah Kasemeyer (Ex-Officio, Advisor)
Ryan Kilpatrick (Ex-Officio, Advisor)
Pat VerDuin
Shirley Woodruff

Audit Committee (FY 2021)

Keith Konarska, Chair
Mary Carole Cotter
Terry Nash

Grants & Program Committee

Cindy Anderson, Chair
Mary Carole Cotter
Jennifer Essex
Natalia Kovicak
Kelly Larson
Anil Mandala
Aashray Mandala, Youth Representative
David Swain

Scholarship Committee (2021)

Cindy Anderson, Chair
Keith Konarska
Debra Mann
Kim McLaughlin
Angie Prieditis
Naomi VanSingel
Julia Wagner
Aaron West

Allendale community foundation

2021 - 2022 Allendale Advisory Board



Jim Beelen
Chair

Kellen Brusveen
Vice Chair

Gwen Luban
Secretary



Kristi Roelofs
Treasurer

Mark Allen

Rebecca Casler

Nicholas Lillie

Don Lipinski

Hilda Wiitingen

\$4,118,854

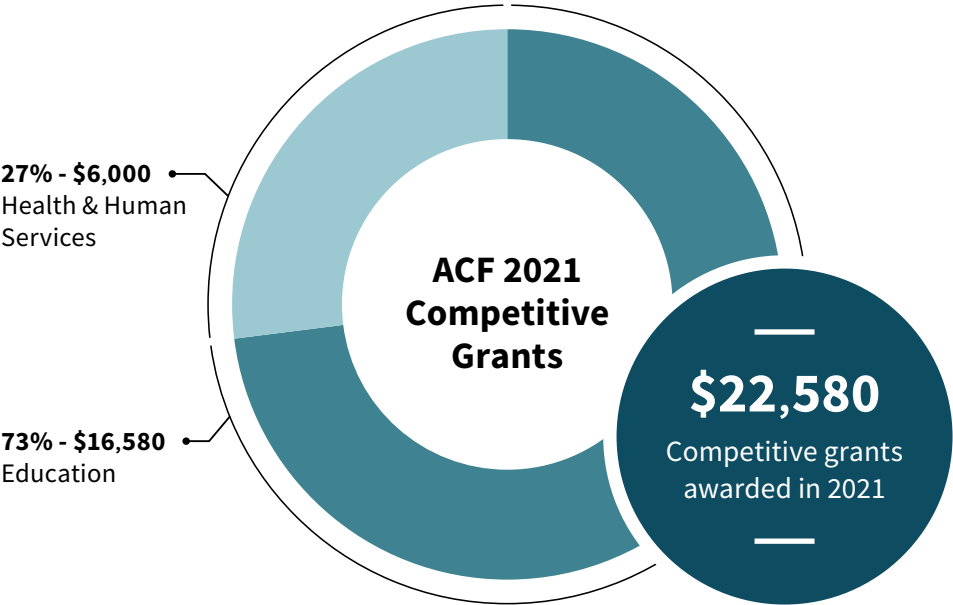
Assets
(as of 12/31/21)

44

Total Funds
(including FASB funds)

\$101,871

Total Granted



Coopersville Area community foundation

2021 - 2022 Coopersville Advisory Board



Ira Engeltjes
Chair

Martin Alexander
Vice Chair

Cori Conran
Secretary



Cheryl Annen
Treasurer

Matt Hehl

LaVonne Marshall

Kelley Monterusso

Kathlene Sheridan

\$8,447,572

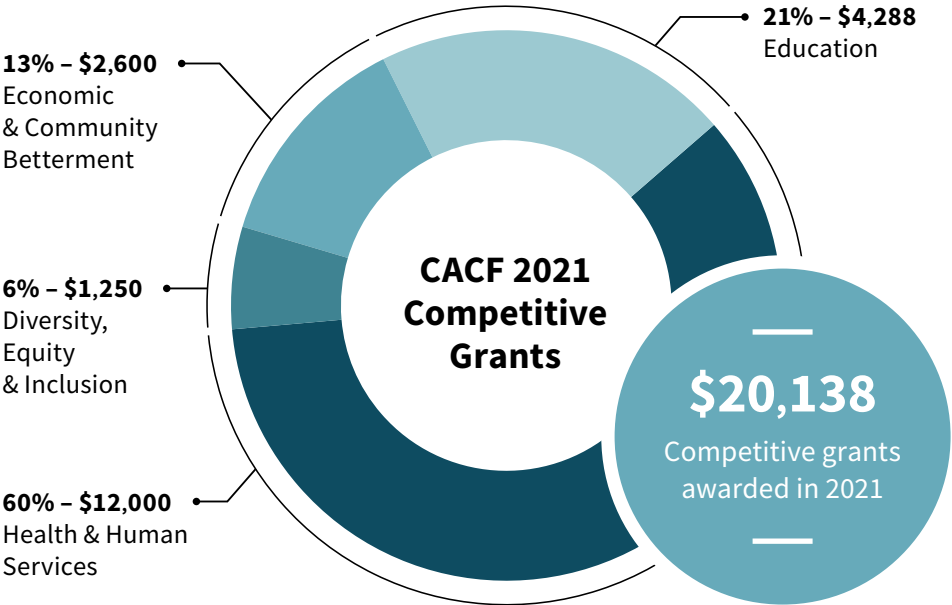
Assets
(as of 12/31/21)

90

Total Funds

\$295,549

Total Granted



Teacher Mini-Grants

The Allendale Community Foundation invites area schools to apply for mini-grant funding to try out a new idea or buy the “extras” for an already great lesson plan or project. Grants of up to \$250 are awarded to teachers to enhance their instructional program. Any teacher, counselor, or administrator employed in a public or private school located in the Allendale area is eligible to apply. Grants are limited to one per classroom and one per teacher per school year.



\$8,692

38 Teacher Mini-Grants



CAYAC

The Coopersville Area Youth Advisory Council (CAYAC) is made up of high school students from the Coopersville area. CAYAC members meet during the school year to discuss and assess youth issues prevalent in the community, as well as to review grant proposals made to benefit youth in the community. Members of CAYAC have the opportunity to make real change by awarding grants to projects which make a positive impact on the community.

\$14,000

Awarded to 8 projects

Board of Trustees



Barb VanHeest
Chair



Mark Pereira
Vice Chair



Keith Konarska
Secretary



Anil Mandala
Treasurer



Cindy Anderson



Mary Carole Cotter



Nelson Jacobson



Natalia Kovicak



Dave Swain



Pat VerDuin



Shirley Woodruff

Acknowledging board members

As a community foundation, we rely on the wisdom and guidance of our Board of Trustees as we work to carry out the mission of our organization. As we welcome our newest board members Brandon Brown and Rob Peel, we'd like to acknowledge and thank our outgoing board members Nelson Jacobson and Anil Mandala.



Brandon Brown



Rob Peel

GHACF Staff



Hadley Streng
President



Holly Cole
Vice President of Grants & Program



Patty MacDonald
Vice President of Finance & Administration



Chris Riker
Vice President of Advancement & Donor Services



Mary Brimmer
Accountant



Nancy Dykstra
Executive Assistant



Catherine Gage
Director Coopersville Area Community Foundation



Elizabeth Huisman
Grants & Program Associate



Abby Reeg
Advancement & Donor Services Manager



Adrienne Whisman
Philanthropic Services Associate

Thank You for Your Continued Support

We love this community as much you do, and we're so grateful to our founders, trustees, staff, for-impact partners, and generous donors. We invite all to join with us as we enter the next 50 years of collectively caring for our community.

For good. For ever.™



Grand Haven Area
community foundation™

1 South Harbor Drive, Grand Haven, MI 49417
616.842.6378 • Fax: 616.842.9518 • ghacf.org • info@ghacf.org





Grand Haven Area
community foundation™

1 South Harbor Drive,
Grand Haven, MI 49417
ghacf.org



Excellence. Accountability. Impact.™

Re-Confirmed in Compliance
with National Standards for
U.S. Community Foundations