



together

Grand Haven Area Community Foundation | 2020





we're
stronger
together



Hadley Streng, President, and Barb VanHeest, Board Chair.

When our founders first came up with the idea to establish the Grand Haven Area Community Foundation, they couldn't have imagined where their foresight would someday lead. For more than a year now, our families, our community, our country, and the world have been challenged in a way none of us have ever experienced.

Within days of COVID-19 being declared a pandemic—and long before we knew how far-reaching the virus would become—we partnered to raise funds and give grants to our for-impact partners, many of whom saw in an increase in demand, had to alter their service delivery, or even close their doors. Many individuals and organizations continued their missions to help our community, often at the risk of their own safety and well-being.

Like so many others, we had to re-envision how to maintain operations while also responding to the increased need in our community. We maintained our Community Impact grant cycle, continued partnering with donors on their charitable intent, and convened around shared goals—thanks to the dedication and resiliency of our team.

Fourteen months after awarding our initial covid-related grant, we completed another grant cycle that brought our total granted to the community past the \$2 million mark.

As proud as we are that we were able to help our community in this way, we cannot overstate our gratitude to the community members who stepped forward to help. Through their donations, we were able to help over 75 for-impact organizations continue their good work.

These efforts were made possible because of the structure of our organization — a structure first imagined by our founders in 1971. The establishment and generous support of our endowed greatest needs fund and the work done over the past fifty years, allowed us to respond quickly and efficiently when our community needed it most and will ensure that we will continue our good work for generations to come.

While next year's annual report will honor our 50th anniversary, this report is a reflection of our work in 2020. We are proud to lead the Grand Haven Area Community Foundation during this time, and thank you for your continued partnership and support.

Sincerely,

Hadley Streng
President

Barb VanHeest
Chair, Board of Trustees

look at what we've done

In 1971, 12 community leaders gathered together because they wanted to do something more for our community.

Something bigger.

They each gave \$100 to start what would become the Grand Haven Area Community Foundation. Little did they know the impact they would have a half-century later.



Former Trustees

Moirá Allen*
Donald R. Anderson
Leonard Anderson
Gary Baas*
Tammy Bailey
Jeff Beswick
Calvin Bosman
Paul J. Boyink*
Richard Briegel*
Melinda Brink
Chad D. Bush
John C. Carlyle
Carol Cousineau
Kennard Creason
William M. Creason*
Tom Creswell

Edward Dahlstrom*
Dennis Dornbush
James Doss
Mary Eagin
E.V. Erickson*
Mary Jane Evink
Kenneth Formsma
Edward Hanenburg
Nancy Hanenburg
Randy Hansen
Kenneth Harestad*
Bud Hoffman
Sandy Huber*
George A. Jackoboice*
Lana Jacobson
Mary Jacobson

Dorothy Johnson
F. Martin Johnson*
Holly Johnson
Susan Jonas
Mark Kleist
James MacLachlan
Peter G. Manting*
Mike McKeough
Donna B. Meeusen*
Donnell Mersereau
John M. Montgomery*
Darell Moreland
Steve Moreland
George Pardee*
Tim Parker
Ted Parker

Edward R. Post
Shirley Poulton
John Randall*
Aileen Redeker
Thomas R. Reinsma
Gerald V. Retzlaff
Gail Ringelberg
Charles Rycenga, Jr.*
James C. Sawyer*
Ida Mae Schaafsma*
David H. Seibold
Helene D. Sherwood*
Lynne Sherwood*
Marion A. Sherwood*
Miller G. Sherwood*
Sheila Steffel

Ruben W. Sturkol
Bonnie Suchecki
Robert N. Swart
Kenneth D. Terpstra
Paul M. Trap
Doris Van Dam*
William VanSlooten*
Gary L. Verplank*
L.J. "Midge" Verplank
Monica Verplank
Michael A. Volkema
Ronald R. Whitehouse
Marcia Witherell
Kim Zevalkink

**deceased*

imagine what we can do, together.

Over the course of the past 50 years, with careful investing, continued contributions from our community, and the dedication of our trustees and staff, that original \$1,200 gift has grown to more than \$175 million in assets as of June 2021. The grants we've awarded have touched more lives than our founders could have ever imagined.

Looking at the next 50 years—and beyond—we are confident the foundation and our partners will continue to impact our community for generations to come.

Each and every one of our neighbors serves as integral building blocks for all the community foundation has done. The impact we've made together—and will continue to make long into the future—is a reflection of the strength of our partnerships and our dedication to making a positive impact on every person who lives, works, and plays in Northwest Ottawa County.

[illegible]

Why A Grand Haven Area Community Foundation?

To provide for programs in the community to promote the highest educational standards and the highest standards in the community's economic development.

It is where the past meets the future.

It is where the past meets the future.

It is where the past meets the future.

What Is The Grand Haven Area Community Foundation?

A Non-Profit Corporation Which

- Provides Grants, Scholarships and Educational Opportunities
- Provides Grants, Scholarships and Educational Opportunities
- Provides Grants, Scholarships and Educational Opportunities

A TAX DEDUCTIBLE CORPORATION

It is where the past meets the future.

It is where the past meets the future.

It is where the past meets the future.

[illegible]


coming together during a pandemic



Campers socially distance at the Tri-Cities Family YMCA summer camp.

In a year like no other, communities across the nation were faced with unimaginable challenges as COVID-19 quickly shocked the world. While the pandemic impacted everyone uniquely, it also forced communities like ours to share a sense of commonality as we faced the unimaginable together. In many cases, households took on new roles as schools and businesses, and everyday life as we knew it took on a new normal.

While so much has changed over the past year, this disruption presents an opportunity for us to take a step back and reflect on how we as a community came together to support one another through this trying time. On behalf of the Grand Haven Area Community Foundation, we would like to share our deep appreciation to our all our donors who give generously and our partners who continue their good work.

670
donors raised over

\$990,000
which was then granted
from the Emergency Human
Needs Fund to
52
for-impact partners



Grants from the Emergency Human Needs Fund helped the Tri-Cities Family YMCA (left) and Love in Action (right) support the community with healthy and nutritious food.

caring for our region

From March through May of last year, a community coalition comprised of the Greater Ottawa County United Way, the GHACF, and the Community Foundation of the Holland/Zeeland Area worked together to monitor the ongoing developments surrounding COVID-19 while proactively working to assist with the increasing needs of our community.

During that time, the coalition awarded 110 grants totaling over \$990,000 from the Emergency Human Needs Fund to area for-impact organizations that were helping our community during the crisis. This fund demonstrated the value of unrestricted assets combined with the power of community giving.

caring for our community

In June 2020, the GHACF established the Community Relief & Recovery Fund (CR&RF) to respond to the current and long-term impact that COVID-19 has had on individuals, families, and for-impact partners within Northern Ottawa County. This fund has enabled the foundation, fund holders, and donors to pool resources to collectively support relief and recovery of organizations that have been adversely affected by COVID-19.

A shortened grant cycle was created to ensure funds went to the organizations as quickly as possible, and a separate committee comprised of GHACF team members and trustees, as well as community members, was formed to review and award grants.

Thanks to generous donations from our community, so far the GHACF has granted over \$1,000,000 from the CR&RF to for-impact organizations.

As of May 2021, we've granted over \$2 million in COVID-19 relief to Ottawa County

Dozens of for-impact organizations received CR&RF grants over the past year, and the foundation continues to support our community during this time. Our endowment allows us to make a difference by quickly serving the community when an unimaginable need arises, now and in the future. This past year has truly been a testament to the strength, unity, and resiliency of our beloved community, and we are grateful for your support.

To date, the Community Relief & Recovery Fund has granted more than
\$1,063,000
to **37** for-impact partners



Combination in-person and telehealth outpatient therapy at Reach for Recovery (formerly OAR). Photo credit: Emily Rose Bennett for the New York Times.

"The outpouring of support from our community and the determination of our partners to help made all the difference in the world."

Thanks to generous donations and tireless support, we were able to be responsive and help care for our community in a way we never imagined.



The Restoring Hope Challenge Match raised money for the Community Relief & Recovery Fund, which began the second phase of the foundation's response to COVID-19 and marked the transition from the initial emergency human needs response to focus on the current and longer-term impact of the pandemic on individuals, families, and for-impact partners within Northern Ottawa County.

COVID-19 Grant Recipients

Emergency Human Needs Fund

Arbor Circle
ATLAS Ministries
Barnabas Ministries
Beacon of Hope
Benjamin's Hope
Bethany Christian Services
Bridge Youth Center (Zeeland)
Children's Advocacy Center
City on a Hill
Community Action House
Coopersville Cares
Emmanuel Hospice
Evergreen Commons
Family LIFE Center
Four Pointes Center for Successful Aging
Good Samaritan Ministries
Hand2Hand
Harbor Hospice Foundation
Harvest Stand Ministries
Holland Free Health Clinic
Holland Rescue Mission
Kids' Food Basket (Holland)
Lakeshore Pregnancy Center
Latin Americans United for Progress (LAUP)

LifeCircles PACE (Holland)
Lighthouse Immigrant Advocates
Love in Action
Love Inc Allendale
Love Inc Hudsonville
Midtown Counseling
Migrant Resource Council
Misión Holland
MOKA
Momentum Center
Mosaic Counseling
My House Ministry
Muskegon YMCA (Veggie Van: brought to Ottawa County in collaboration between the Grand Rapids YMCA, the Muskegon YMCA, and the Tri-Cities YMCA)
Reach for Recovery (formerly OAR)
Outdoor Discovery Network
Ottawa Community Schools Network (Coopersville)
The People Center
Resilience: Advocates for Ending Violence
RestHaven
Ripple Effect
The Salvation Army of Grand Haven
The Salvation Army of Holland
Senior Resources of West Michigan

The Emergency Needs Programming of Francis de Sales Catholic Church
The Immigrant Relief Fund of St. John's Episcopal Church
Wedgwood Christian Services
West Michigan Hispanic Center
West Michigan Open Source Medical Supplies Group

Community Relief & Recovery Fund

Arbor Circle
Association for the Blind & Visually Impaired
Bethany Christian Services
Big Brothers Big Sisters
Children's Advocacy Center
City of Grand Haven (Neighborhood Housing Services)
Community Access Line of the Lakeshore (Call 211)
Every Woman's Place
Four Pointes Center for Successful Aging
Gracious Grounds
Grand Haven Area Public Schools
Good Samaritan Ministries
Hand2Hand

Junior Achievement of the Michigan Great Lakes
Lighthouse Immigrant Advocates
The Little Red House, Inc.
Loutit District Library
Love In Action
Mary Free Bed
Momentum Center
Mosaic Counseling
No One Lives Alone
Northwest Ottawa Recreation Authority
North Ottawa Community Health System
Reach for Recovery (formerly OAR)
Ottawa Area Intermediate School District
Ottawa Community Schools Network (Coopersville)
Outdoor Discovery Network
R.E.A.D. Ottawa
Resilience: Advocates for Ending Violence
The Salvation Army of Grand Haven
Spring Lake Public Schools
TCAN Preschool Roundtable
Talent 2025
Tri-Cities Family YMCA
Tri-Cities Habitat for Humanity
Walden Green Montessori

Grants from the Emergency Human Needs Fund were awarded to organizations outside our local community due to the collaborative partnership with the Community Foundation of the Holland/Zeeland Area and the Greater Ottawa County United Way.

caring together

This year has proven that we cannot care for our community alone. In addition to the over **\$2,000,000** granted to the community for COVID relief, our Community Impact Grant Program continued supporting our local for-impact organizations with strategic and purposeful programming.



In 2020, a total of **\$8,152,571** went back to our community from all funds, and of that, **\$1,233,145** was awarded in grants from our Greatest Needs Funds, Field of Interest Funds, and the Youth Fund.



* includes contributions to Community Relief & Recovery Fund

**includes contributions to Emergency Human Needs Fund

2020-21 Grants Committee

Our grantmaking committee is made up of board members, community members, and a representative from our Youth Advisory Council. Together they make the critical decisions to care for our community.

Pat VerDuin (Chair), Cindy Anderson, Keith Konarska, Anil Mandala, Mary Carole Cotter, David Swain, Kelly Larson, Jennifer Essex, Madison Rogers (YAC Member)



Tri-Cities Historical Museum: Community Archive and Research Center



Textile collection storage and artifact processing at the Community Archive and Research Center.

The Tri-Cities Historical Museum (TCHM) is responsible for collecting, preserving, and sharing the artifacts and stories of the Tri-Cities' past. In alignment with best practices established by the American Alliance of Museums, a series of facility improvements at the Community Archive and Research Center (CARC) will allow for superior preservation of delicate and rare documents for future generations.

"This grant has enabled us to follow best practices in receiving, processing, and caring for our community artifacts," said Ann White, Transitional Manager at TCHM.

The creation of an artifact processing room ensures that newly acquired pieces are free of infestation by insects, mold, or other destructive elements prior to integrating

"...will allow anyone from anywhere in the world 24/7 access to information and photos of the artifacts in our collection."

within the collection, while upgrading the textile collection storage will increase airflow and prevent potential structural damage.

White added, "This grant also funded the final stage of implementing our cloud-based collections software, Collective Access, which will go live before the end of the year and will allow anyone from anywhere in the world 24/7 access to information and photos of the artifacts in our collection."

Digitizing the museum's collection will allow the museum to provide the community, and all school systems, remote access to the museum's entire collection. The searchable system will not only be a service to the community, it will provide the staff greater efficiency in their work.



Arts & Culture

*Bring regional and national art and cultural experiences and opportunities to the community;
Supports programs that deliver arts and cultural experiences to under-served populations of the community;
Support the collaboration and growth of local arts and cultural organizations within the community.*

The Momentum Center: Community Conversations on Race & Racism



Screen shots from Town Hall meetings.

"As we wrestle with questions of equity and justice, we are in a unique time and space to engage in meaningful dialogue with people of diverse views," said Barbara Lee VanHorsen, Experi-mentor of the Momentum Center.

The Momentum Center launched The Town Hall Series on Race & Racism to create a safe space for residents and community leaders to have thoughtful conversations regarding various aspects of race and racism, while providing educational information, resources, and opportunities for action.

The Town Halls were planned and facilitated by a new (Anti) Racism Task Force, a collaborative that includes the Momentum Center, The City of Grand Haven's Human Relations Commission, Loutit District Library, Tri-Cities Family YMCA, North Ottawa Community Healthcare System, Ottawa County Community Mental Health, Hope College,

"...we are in a unique time and space to engage in meaningful dialogue with people of diverse views."

Ottawa County Schools Network, Mosaic Counseling, Grand Haven Area Community Foundation, Fifth Third Bank, and a diverse group of individuals from in and around the immediate community.

"We are so grateful for the support ... in helping us to convene the (Anti) Racism Task Force and to facilitate community conversations about

this important topic," said VanHorsen. "These Town Hall Meetings create a safe space for people of different perspectives and backgrounds to enter into conversation, not to debate or to finger point, but to share their experiences and observations. [They] are not just a series of presentations, but a platform for engaging in a true community conversation between leaders and people at the grassroots [level]."



Diversity & Inclusion

*Address equity, diversity, and inclusion within the community;
Involve and empower the inherent worth and dignity of all people;
Promote and sustain a sense of belonging within the community.*

Greater Muskegon Economic Development – West Michigan Food Processing Association: Healthy Food & Sustainability through Increased Education



The FARM (Food, Agriculture, Research, and Manufacturing) facility in Muskegon, Michigan.

“The West Michigan Food Processing Association (WMFPA) was developed at the request of the food industry, and regional economic development and educational partners,” said Marty Gerencer, Executive Director of WMFPA. “A key focus is to develop and catapult the food industry into 21st Century Future Food formulations and technologies providing our area youth with a pathway to sustainable livelihoods.”

The WMFPA seeks to combine existing, local agriculture attributes with the benefits of expanding regional food processing capabilities. Ottawa County serves as the third highest agricultural county in the state, producing \$534 million in agricultural products, from 170,000 acres, annually. Additionally, food processing serves as the fourth largest manufacturing sector in Allegan and Ottawa Counties. Together, the region is primed for exponential growth in future food trends—healthy food processing, sustainable energy practices, and sustainable packaging and waste reduction.

The WMFPA FutureFoods21 Program's vision is to work with educational partners, such as Muskegon Community

"The new association has developed a new economic development sector, catalyzing hundreds of millions dollars in economic opportunities."

College, Michigan State University, area high schools, and ISDs to provide hands-on training at the Food, Agriculture, Research, and Manufacturing (FARM) facility in Muskegon. This would boost educational and economic growth by providing the current and future labor force with livable wage livelihoods and career pathways through the provision of the skills necessary to meet and exceed food safety standards, new COVID protocols, and the latest product innovations that are both healthy and sustainable.

Gerencer said, "Together with our supporters and our communities, we've launched and stabilized a new association that has now developed a new economic development sector, catalyzing hundreds of millions dollars in economic opportunities to the West Michigan region. We've also completed the construction, launch, and operationalization accelerator that is already mobilizing industry 4.0 companies, and catalyzing funding support for STEM training for the workforce of the future."



Economic & Community Betterment

*Support cooperation among municipalities, especially in the areas of recreation, transportation, as well as consolidated planning;
Support the revitalization and beautification of areas of commerce in our region.*

Spring Lake Public Schools: Social Emotional Learning



Screen shot from mindfulness video.

Mental health remains a critical issue in our community. The Social Emotional Learning program provided sustainable training and tools to the students and staff of Spring Lake Public Schools regarding the development of healthy social-emotional life skills. The project included two components: Mindful Schools curriculum and Trauma-Informed Classroom training.

Mindful Schools is a nationally research-based curriculum. Studies have shown that Mindful Schools can improve attention and emotional regulation among students, including decreased feelings of stress and anxiety. A certified facilitator provided mindfulness lessons to approximately 1,400 students within grades K-6 throughout the Spring Lake Public Schools district.

"We continue to feel blessed by the support we receive ... that make programs like Mindfulness possible."

Lessons were 15 minutes in length and included topics such as Mindful Listening and Mindful Breathing throughout the 2019-2020 and 2020-2021 school years. When the district closed in Spring of 2020 as a result of COVID-19, video lessons were created and distributed weekly for the remainder of the academic year.

"We continue to feel blessed by the support we receive from the Grand Haven Community Foundation that make programs like Mindfulness possible," said Scott Ely, Curriculum Director for Spring Lake Public Schools.

Trauma-Informed Classroom training was provided to all Spring Lake Public Schools K-4 staff. A trauma-informed school is informed of and sensitive to trauma, providing a safe, stable, and understanding environment.



Education

*Address the barriers preventing students from pursuing post-secondary education opportunities;
Improve student access to the necessary academic, social, and emotional resources required to reach their full potential;
Support access to and participation in quality preschool programs, particularly those in under-served populations.*

John Ball Zoo: Time to Soar Capital Campaign



Left: Updated picnic area. Right: flooded picnic area before work was completed.

John Ball Zoo serves as Northwest Ottawa County's closest and most utilized AZA (Association of Zoos and Aquariums) accredited zoo. The Time to Soar Capital Campaign made the park modern, ADA accessible, and environmentally sustainable to further educate on the importance of conservation and environmental protections.

The zoo successfully modernized their stormwater system, which involved the creation of a net-zero water habitat for a new pygmy hippo exhibit. The zoo now manages water flow to the park pond through stormwater diversion, permeable pavement, bio swales, rain gardens, and other efficiencies.

"We are so grateful for funds from the Grand Haven Area Community Foundation and other donors that have

"The new system will annually prevent nearly 25,000,000 gallons of stormwater from reaching the Grand River."

allowed us to replace our aging stormwater system," said Brenda Stringer, Capital Campaign Director of the John Ball Zoo. "It is now shifting millions of gallons of stormwater to the park pond instead of the picnic areas, parking lots, and the city storm system. The new system will annually prevent nearly 25,000,000 gallons of stormwater from reaching the Grand River and ultimately Lake Michigan."

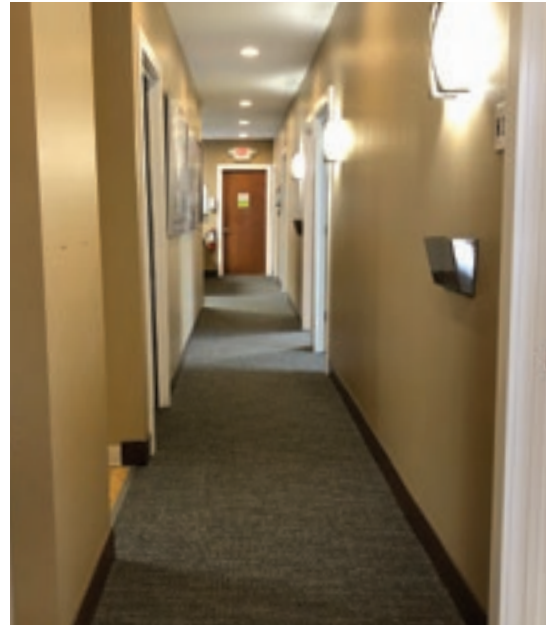
The zoo also implemented renewable energy and environmentally friendly practices for habitats and buildings, including composting and native plantings. The Time to Soar Capital Campaign created an inclusively designed experience and implemented green, sustainable practices throughout the zoo.



Environment

Center on the preservation of natural green space and "smart land use" planning; Address critical water quality issues, including nearshore health, the sustainability of wetlands, and non-source pollutants. Lake Michigan, the Grand River Watershed, Spring Lake, and local creeks and streams are of special concern; Promote environmental sustainability through alternative energy initiatives and recycling projects.

Love in Action: Free Health & Dental Clinic Expansion Project



Updated flooring and other improvements help make patients feel more welcome.

Love in Action's Free Health & Dental Clinic serves hundreds of uninsured and underinsured residents of Northwest Ottawa County. Improving the capacity and function of the facility helped meet the increasing need and maintain a professional environment. The renovation of the health and dental clinic increased space for staff, medical volunteers, and patients while improving patient and client privacy and confidentiality.

"At Love in Action, it is crucial to provide a warm, safe, inviting atmosphere so each person has the opportunity

"... it is crucial to provide a warm, safe, inviting atmosphere so each person has the opportunity to face physical challenges with dignity."

to face physical challenges with dignity," said Love in Action Executive Director, Josh Bytwerk.

Renovations included the separation and ultimate creation of two reception areas for traditional Love in Action programming and health clinic clients, while also creating new office and clinic space, an adjoining conference space, and a new filing room. New flooring, walls, paint, electricity, plumbing, and furniture were included in the project.

Bytwerk added, "The Grand Haven Area Community Foundation empowered key renovations this past year that have transformed the clinic space."



Health & Human Services

*Support access to physical and mental health services; Promote healthy lifestyles and relationships for all;
Address priorities based on data gathered through Community Needs Assessments and Community Health Improvement Plans;
Support local health initiatives that are endorsed by multi-sector collaboration; Address human needs for underserved populations.*

giving together

The grants awarded from our Community Impact Grant Program are made possible by gifts to our unrestricted funds, but those are only a fraction of our story. Gifts to the foundation, year after year, ensure that our for-impact partners are able to continue their good work in our community.

The types of funds at the community foundation reflect the varied interests of our fund holders and donors. Whether they are donor or committee advised, designated or unrestricted, new or longstanding, endowed or non-endowed, our funds are evidence of the spirit and generosity of individuals, families, corporations, and organizations seeking to make a positive impact in our community today, tomorrow, and forever.

why give

We believe that philanthropy is unique and personal. We remain focused on, and committed to, listening, learning, and partnering with current and prospective donors, fund holders, and professional advisors to match intent and ensure that each experience is meaningful and impactful.

Giving through the foundation doesn't have to be complicated, nor does it require great wealth. A gift of any size is a valuable contribution that will help make positive, lasting change in Northwest Ottawa County.

where to give

- Give to an existing fund • Establish a new fund • Establish a recurring gift
- Leave a bequest • Give to our greatest needs

By giving to the Greatest Needs Fund, you enable the foundation to address our community's most pressing needs and promising opportunities, both now and for generations to come, through competitive grants to local for-impact partners.

what to give

We facilitate a variety of gifts, including:

- Cash • Stocks, bonds, and mutual funds • Closely held stock • Real estate
- 401K and IRA accounts • Life insurance policies • Bequests

how to give

If you're interested in making a contribution, you may:

- » **Give online** at ghacf.org/donate
- » **Mail a check** to Grand Haven Area Community Foundation at One South Harbor Dr., Grand Haven, MI 49417
- » Arrange for a **planned gift** by contacting Chris Riker, VP of Advancement & Donor Services

If you're considering a gift of **appreciated stock**, please contact Chris Riker or Patty MacDonald, VP of Finance & Administration, for questions or transfer instructions.

All donations are eligible for the Federal Income Tax charitable deduction as allowed by charitable tax law. Please consult with your professional advisor with questions regarding a charitable gift.

As we continue to grow, both in asset and team size, we have listened to feedback from our donors and are continuing to enhance and innovate our services. Recent additions include a Donor Wish List, which features needs of our local for-impact partners and how donors can help, and a multi-year fund audit, which includes digitizing all fund records and updating missing or outdated information.

types of funds



greatest needs funds

Enable the GHACF to remain proactive, responsive, and flexible to our community's most critical needs.

41



field of interest funds

Connect personal values to high-impact opportunities and allow individuals to target their gifts to address needs in a specific area.

41



donor & corporate advised funds

Allow an individual, family, or company the ability to establish a charitable fund, then recommend grants while the foundation staff administers the grants.

207



community service funds

Enable collective giving to a singular fund that supports a community project. Typically open for only 1-3 years.

22



designated funds

Support the mission of 501(c)3 organizations by designating them as the beneficiaries of the fund.

74



organizational funds

Provide for-impact organizations income streams to support programs and operations.

146*



scholarship funds

Invest in the next generation with post-secondary education assistance and build a foundation for a brighter tomorrow.

131

number of funds at the GHACF

\$5,000 minimum to open all funds, except scholarship funds, which require \$25,000

** FASB (Financial Accounting Standards Board) funds not included in total number of funds*



Kirsten Terborg Grand Haven Christian School Tuition Assistance Memorial Fund

The impact of an educator on the lives of her students is a profound one, and one that lasts far beyond the classroom. Kirsten was a beloved teacher at Grand Haven Christian School, and a community effort of administrators, teachers, family, and friends saw to it that her legacy of kindness and generosity would continue through an **organizational fund** to help GHCS students by providing tuition assistance to those with financial need.



50th Anniversary Greatest Needs Fund

Fifty years ago, a group of a dozen community leaders gathered together because they wanted to do something more for their community. They each gave \$100 to start what would become the Grand Haven Area Community Foundation. Little did they know the impact they would have a half-century later.

We're proud of our history and the partnerships that brought us to this point, and we've opened this **greatest needs fund** to continue our good work for the next fifty years.



Arno and Judith L Driedger Fund

Service to community is important to Arno and Judy Driedger, and they are busy volunteers in the Coopersville area. They have both served as are board members of Coopersville Cares and the Coopersville Area District Library, as well as are volunteers through the Ottawa County Victims Advocacy and the Roundabout Beautification Project. They established this **designated fund** so their minimum distribution from their IRA spendable will support the library and the food pantry. Their caring and giving heart will live long after they are gone.

All featured funds are new as of September 2020



greatest needs funds *enable the foundation to remain proactive, responsive, and flexible to our community's most critical needs.*

50th Anniversary Greatest Needs Fund

Friends of the Foundation Fund
Thomas and Mary Kay Alguire Family Fund
Allendale Greatest Needs Fund
40th Anniversary Greatest Needs Fund
Ann Tabor Greatest Needs Fund
Janet and Ruth Beukema Fund
BR Fund
Janice Carducci Fund
Andy & Joyce Cawthon Greatest Needs Fund
Community Action Fund
David and Carol DeBlaey Fund
Howard Dykhouse Fund
Dr. Edgar and Gretchen Garrison Family Fund
GHACF Greatest Needs Fund

Kent M. and Freida Hastings Fund
F. Martin Johnson Greatest Needs Fund
Doris V. Johnson Fund
Ausma Lanka Fund
Amy Lantz Memorial Fund
Lee Family Fund
Paul and Minnie Luytjes Fund
Garry L. and Jean Fisher Mesler Family Fund
LJ Midge Verplank Greatest Needs Non-Endowed Fund
Dorothy Mixer Fund
Henry Neitring Fund
Dr. Larry A. Poel Greatest Needs Fund
Judge Jacob and Betty Ponstein Fund
Nancy Dornbos Rhem Fund

Fred Riplo Family Fund
Eugene "Gene" Rothi Community Fund
Dr. Harold Sheridan Fund
B. P. Sherwood, Jr. Trust Fund
Marion A. Sherwood Family Fund
Lynne Sherwood Fund
Marion A & Ruth K Sherwood Greatest Needs Fund
James and Mary Teitsma Fund
Robert W. and Mary Ellen Thomas Family Fund
Kenneth and Audrey VanBeukering Fund
Ward W. and Jean M. Verseput Fund
Robert P. and Annette Fisher Whitney Fund

■ indicates new fund
Sept 2020-August 2021



Dr. Larry A. Poel Greatest Needs Fund

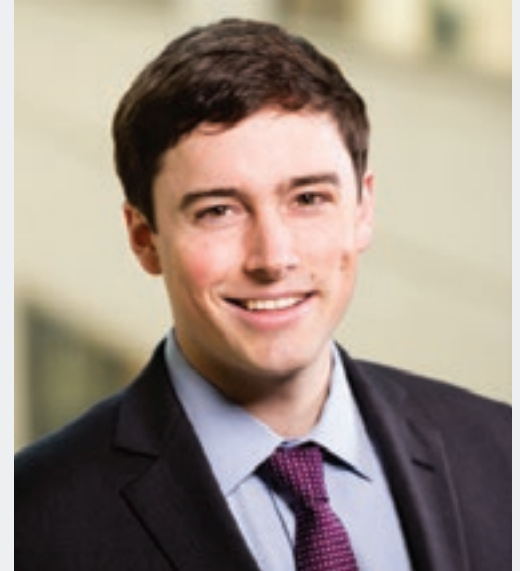
Dr. Poel established this **greatest needs fund** to receive his required minimum distribution (RMD). As a member of the GHACF Legacy Society, Dr. Poel elected to start giving now to this unrestricted fund.

Unrestricted funds enable the GHACF to remain flexible and responsive to community needs as they evolve and change over time. This endowed fund will ensure that the philanthropic impact of Dr. Poel continues on in perpetuity.



Public Artifact Preservation Non-Endowed Fund

This **organizational fund** allows the City of Grand Haven to exclusively designate funds toward supporting the unique public and historic artifacts and installations within the community. This will ensure that the distinctive landmarks that reflect our community's history are well cared for and can be maintained for generations to come.



Daniel P. Cherette Memorial Fund

Danny lived a life full of enthusiasm and joy in pursuit of his passions. He cared deeply for people and invested himself in the betterment of others throughout his life. After his passing, his family chose to honor Danny's life by continuing his impact through a non-endowed **donor advised fund** in his memory. They plan to make meaningful grants that continue Danny's legacy and caring spirit.



field of interest funds *connect personal values to high-impact opportunities and allow donors to target their gift to address needs in a specific area.*

Edith Mae and William Alt Family Fund
Richard E. and Eleanor Carlson Babcock Memorial Fund
Emilie Baker Fund for the Environment
William T. and Shirley A. Baker Family Fund
Tri-Cities Chautauqua Field of Interest Fund
College Access Endowed Fund
Dr. Elizabeth Curtis Dental Fund for Children in Need
Elmer "Lou" Dense Fund
Elizabeth Davison Kammeraad Dobbie Fund for History
Alyce R. Erickson Field of Interest Fund
Farmland Preserve Fund
Fluor Schwartz Memorial Fund
Grand Haven Area Community Foundation
Arts Fund
Environment Fund
Family and Children Fund
Technical Assistance Fund
Youth Fund

Gene and Sally Harbeck Fund
Healthy Seniors Healthy Youth Endowment
Jerovsek Family Fund
Friends of Kandu Endowment Fund
L.E.T. (Love, Enjoy, Teach) Fund
Craig Looman Fund
Fletcher Meekhof Food Fund
William H. Young and Dorothy Young Mixer Field of Interest Fund
North Bank Communities Fund
North Ottawa Area Community Coalition Fund
Marie and Lloyd O'Neal Family Fund for Music
Reichardt Family Endowment Fund
Helene D. and Bernath P. Sherwood, Jr. Fund
Mary Ann Sherwood Families and Children Field of Interest Fund
Tree Replacement Fund
Tuesday Musicale Fund

United Way Fund for Human Services
Wayne VanAgtsmael Field of Interest Fund
Kenneth and Audrey VanBeukering Fund
Mary Vivian Fund for the Arts
Cornelia B. Wagner and Ruth B. Hoek Fund
Margaret Lynn Wilson Fund
Youth Fund of the Coopersville Area Foundation
Zenko Family Field of Interest Fund



Susan A. Bissell Memorial Fund for the Arts

The establishment of this **donor advised fund** came through a bequest from Susan as a way to continue her life's work of creating vibrant communities for the benefit of all. She dedicated countless hours to community leadership positions, educational programs, and cultural endeavors. Grants will focus on the arts in Ottawa, Muskegon, and Kent County as a way to reflect Susan's love of the arts and this community.



James & Wendy Onderlinde Family Fund for GHCS

This **organizational fund** will support Grand Haven Christian School's general operations. James and Wendy have strong ties to Grand Haven Christian School, with James serving as the principal from 2014-2019, as well as their three boys attending school there. This fund will reflect their continued support and dedication to educating the minds and shaping hearts of the students at Grand Haven Christian School.



CHS Class of 1973 Fund

Friends from the Coopersville High School Class of 1973 opened this **donor advised fund** in preparation for their CHS 50th reunion. They want to raise money for Coopersville Area Public Schools for teacher and student projects, and other projects for CAPS. They encourage their classmates to give to this fund now and make an impact on the school. Then, they will celebrate their fundraising at the reunion in 2023.



donor and corporate advised funds allow an individual, family, or company to establish a charitable fund with a single gift.

- Add to the fund with additional gifts at any time
- Enjoy administrative convenience, cost savings, and tax advantages
- Gain access to the expertise of the community foundation's staff
- Recommend grants and leave the administrative tasks to us

@HomeRealty Foundation
Abbit Management Corp
C. Bennett Ainsworth Fund
Alt, Jonas & Mercurio Family Fund
Amberger Family Fund
Cynthia and Donald Anderson Fund
Len and Wanda Anderson Family Fund
Baas Family Fund
George M. Bailey Donor Advised Fund
Douglas and Katharine Baker Family Fund
Pearl Bandstra Fund
Barker Family Fund
Ray and Sue Barrett Garden Fund
Paul C. and Carol C. Bedient Family Fund
Betten Baker Fund
Betten Preferred Auto Group Fund
Susan A Bissell Memorial Fund for the Arts

BizStream Community Fund
Boer Family Fund
Carolyn Boersma Fund
Boezaart Family Fund
David C. and Gail L. Bos Family Fund
Jake Bouman Memorial Fund
Mackenzie Boyd Fund
Barbara Boyer Fund
Scott and Jennifer Breen Family Foundation
Richard and Patricia Briegel Family Fund
Budd and Melinda Brink Family Fund
Fred C. Bruhn Donor Advised Fund
John G. and Claire E. Bryson Family Music Fund
Robert and Virginia Burnside Family Fund
Brusveen Chiropractic Center Charitable Fund
Dan Bylsma Charitable Fund
Robert L. Bytwerk Family Fund

CAPS Science Program
Kevin Carbary-Carol Alexander Fund
The Coopersville Robert J. and Betty L. Casemier Family Fund
Coopersville Rotary Club Community Action Fund
Coopersville Rotary Club Fund
The Grand Haven Robert J. and Betty L. Casemier Family Fund
Denny & Grace Cherette Family Fund
Daniel P. Cherette Memorial Fund
Chris-Tina Fund
CHS Class of 1973 Fund
Clayton Family Fund
John and JoAnne Clickner Family Fund
Bob Constant Athletic Memorial Fund
Mike Cook Fund for Fun in Education
Crane Family Fund
Kennard and Wendy Creason Family Fund



Craig L & Dianne H LeMieux Fund

Supporting nonprofits and local philanthropy has always been an important aspect of Craig and Dianne's journey. They decided to create a lasting, impactful legacy through an endowed **donor advised fund**, that would allow them to recommend grants to nonprofits over time while also ensuring future support of community and charitable initiatives through their philanthropy. The inclusion of their children as fund successors will encourage this spirit of giving within future generations.



Barker Family Fund

Bob and Julie Barker established the Barker Family Fund out of their love for Grand Haven, a community that they acknowledge has given their family so much. The Barkers plan to use their new **donor advised fund** to assist their family with charitable giving. They very intentionally included their daughter, Alexandra, in the creation of the fund and plan to continue passing along the importance of giving back to positively impact the community.



Jake Bouman Memorial Fund

Jake lived a life of adventure and joy. He had a great love for his friends and family, as well as his community. His parents, Mike and Linda, and his sister, Meghan, opened a **donor advised fund** as a way to honor his impact on the world. His life made a beautiful difference to everyone he met, and this fund is a way to continue spreading the joy Jake brought to others.

William and Mary Creason Fund
 Alex Crum Memorial Sports Fund
 Scott E. DeBoer Memorial Fund
 Howard and Louise Dekker Family Fund
 Dale and Elizabeth Deppe Family Fund
 Jeremy & Daniela Deppe Family Fund
 Detter/Walcott Early Childhood Education Fund
 Doug & Lynnda De Vries Family Fund
 Keith and Mary DeWitt Family Fund
 Mark and Denise DeWys Family Fund
 Ralph and Arleene DeYoung Donor Advised Fund
 The Diva Fund
 The Dornbush Family Fund
 James A. Doss Family Fund
 N. Kay Doss Memorial Fund
 Howard and Wilma Draft Family Fund
 Eagin Family Fund
 Martha A. Erickson Fund
 B. John and Jennifer Essex Family Fund
 William J. Fettis & Dawn M. Dupont Family Fund
 The Hon. Mark A. & Debra J. Feyen Family Fund
 FISH Fund
 Fleming and LaTorre Family Fund
 Louis P. and Sharon F. Fracalossi Family Fund
 Friends of the Coopersville Library Fund
 Gage Family Fund
 Gahsman Family Memorial Fund
 Grand Haven Rotary Fund
 Grandma Glo, TJ, Skylee & Cody Family Fund
 Valerie Guttowsky and Craig Councilor Fund
 Edward J. and Nancy R. Hanenburg Family Fund
 Nancy Hanenburg Fund
 Kenneth D. and Janet A. Harestad Family Fund
 James and Catherine Haveman Family Foundation
 Douglas and Sharlene Hekman Family Fund
 Holtrop-Tubbergen-Holtrop Family Fund
 Julia Houle Advised Fund
 James and Debra Hovinga Family Fund
 Sandy Huber Fund
 Richard G. & Patricia R. Huff Children's Support Fund
 Mike and Jane Hutchins Family Fund
 George A. and Sherry A. Jackoboice Family Fund
 James and Sally Jacobs Fund
 Alvin E. and Mary C. Jacobson Family Fund
 David and Nancy Bird Jacobson Family Fund
 Nelson C. and Lana Jacobson Fund
 Grand Haven Area Jaycees
 Ted V John Charitable Fund
 F. Martin and Dorothy A. Johnson Family Fund
 Paul A. and Charlotte A. Johnson Family Fund
 Johnson Rechner Family Fund
 Holly & Erick Johnson Family Fund
 JSJ Foundation Fund

Todd and Amy Kamps Family Fund
 Brian and Nancy Kamstra Family Fund
 Kar Family Fund
 Keeton Family Fund
 Mikel Allen Kelley Memorial Fund
 Sanford and Kristine Kelley Family Fund
 Phil and Jane King Family Fund
 David J. and Sandra J. Klaassen Fund
 Komray Family Fund
 James E & Mary B Koster Fund
 Jim and Candy Kraker Family Fund
 Stella Kruizenga Fund for Women
 Lahey Family Fund
Craig L & Dianne H LeMieux Fund
 Robert and Karen Lemmen Family Fund
 Hung and Elsie Liang Fund for Music
 Light Corp Foundation Fund
 Faith Marie Losee Fund
 The Loutit Foundation
 Anil K. & Shanthy R. Mandala Fund
 Mandy's Promise Fund
 Debra and Robert Mann Family Fund
 MaryLou (Witherell) Matzen Alzheimer's
 Advocacy Fund
 McKeough Family Fund
 Larry and Anne McLaughlin Fund
 Nate and Kristin Meldrim Family Fund
 Robert Jacobson and Donnell Snite Mersereau Fund
 Kyle Moreland Memorial Fund
 Phyllis and Darell Moreland Family Fund
 Peter and Sheila Murdoch Donor Advised Fund
 Bonnie Olson Memorial Fund
 The William F. O'Connor Foundation,
 Joanne Unkovskoy, Trustee Fund
 Ted and Vicki Parker Family Fund
 Richard O. and Elizabeth A. Peel Family Fund
 Sherrian A. and Thomas C. Pegg Family Fund
 Pliant Plastics Foundation Fund
 Larry Poel Fund
 Craig and Coreen Porter Family Fund
 Garrod S Post & Robert A Hill Fund
 Ted and Shirley Poulton Family Fund
 Quigg Family Advised Fund
 Robert H. and Andrea G. Rander Fund
 Scott and Julie Reenders Family Fund
 Milt and Judy Reeths Fund
 Evan and Lois Reinders Fund
 Remembrance Church Annual Fund
 Gerald & Starr Retzlaff Family Fund
 Thomas and Gail Ringelberg Family Fund
 Dr. M. Gary and Pennie L. Robertson Family Fund
 Norah Lane Roelofs Memorial Fund
 Rotary Club of Allendale Fund
 Lloyd S. and Marlene Rotz Family Fund

Sylvia and Ron Ruscett Family Fund
 John and Marie Rycenga Family Fund
 Jonas Saunders Family Fund
 James C. and Rosena A. Sawyer Fund
 Science Olympiad Programs of Grand Haven
 Public Schools Fund
 Dan and Carol Sedlock Family Fund
 Dave and Dottie Seibold Fund
 Shape Corp. Fund
 Barbara and Miller Sherwood Family Advised Fund
 Marilyn W. and B. P. Sherwood III Family Fund
 Sietsema Family Fund
 Donald and Dorothy Sikkema Fund
 Slagel Family Fund
Slater Family Donor Advised Fund
 Linda Shores and Michael Snodgrass Fund
 Spring Lake Rotary Endowment Fund
 Spring Meadow Fund
 Paul K. and Marlene A. Spoelman Family Fund
 R. Neal Stanton and Grace F. Stanton Fund
 Steffel Family Fund
 Dr Alan D Steinman Fund for the Environment
 Sen. Leon E. & Dzintra D. Stille Family Fund
 Dee and David Stokes Family Fund
 Steven K. & Elizabeth M. Swanson Directed Fund
 Dan and Ann Tabor Fund
 Kenneth D. and Mary L. Terpstra Family Fund
 Theune Family Fund
 Tri-Cities Kiwanis Club Fund
 VanAndel Family Fund
 John and Elaine Vander Kooi Family Fund
 Roger and Lois Vander Meulen Family Fund
 Verplank Donor Advised Fund
 Anthony & Monica Verplank Thriving
 Communities Fund
 Gary & Victoria Verplank Fund for Spring Lake
 Water Quality
 Kyle and Samantha Verplank Family Fund
 Victoria Verplank Fund for Spring Lake Village Trees
 Waanders Family Fund
 Thomas A. and Caryle R. Wagasky Fund
 Robert & Deborah Wagenmaker Family Fund
 David H. and Patricia H. Walborn Fund
 Wallinga Family Fresh Start Fund
 Robert and Jillayne Warners Family Fund
 Weber Family Fund
 North Ottawa Wellness Foundation
 West Michigan Nursery and Landscape Association
 Horticultural Education Fund
 Whiting - Bolthouse Family Advised Fund
 Nancy and Warren Wildeman Fund
 James & Diana Wright Fund
 James and Louise Zevalkink Fund



community service funds are typically short-term funds that enable collective giving to a singular fund that supports a community project. These funds are not invested.

Allendale Township Fitness Court

CAPS Community Trails & Outdoor Learning Center Fund

City of Grand Haven

Coal Tipple Restoration Fund
Duncan Park Preservation Fund
Lighthouse Rehabilitation Fund
Waterfront Stadium Fund
Imagination Station Reimagine Project Fund
Save the Catwalk Fund

College Access Fund

Community Relief & Recovery Fund

Coopersville Cares Capital Campaign Fund

Coopersville Memorial Fund

GHAPS Mental Health Fund

Housing Next Fund

Ottawa County Parks

Allendale Trail Fund - Phase 1
Grand River Ravines Fund

South Evergreen School Fund

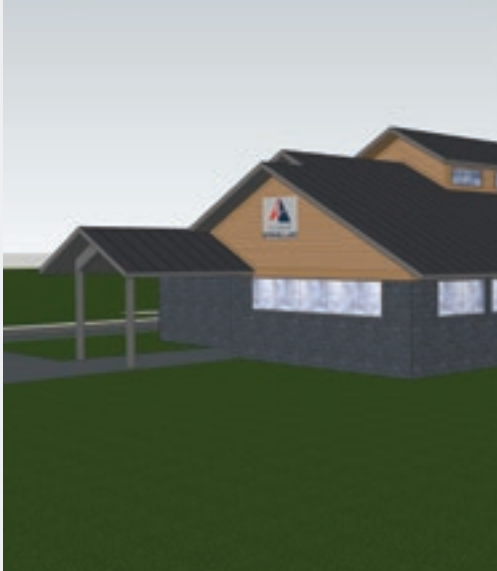
Spring Lake Tennis Building Fund

Village of Spring Lake

Art in the Park Fund

Central Park Improvement Fund
Tanglefoot Park Fund

West Michigan Symphony Campaign Fund



Tanglefoot Park Fund

Originally donated to the Village of Spring Lake for public purposes, Tanglefoot Park is being redeveloped into a public space with space for farmers markets, public gatherings, children's play, and accessible outdoor recreation. The creation of a green space near the village center will provide residents and visitors with a common space where they can enjoy nature and local events. The funds are held in a **community service fund** by the foundation to allow easy access by the village and donors alike.



**Muskegon Museum of Art
Capital Campaign Fund**

As one of the region's cultural centers, the Muskegon Museum of Art created a capital campaign to expand in order to reflect the size of the collection and create a regional destination for locals and visitors alike. A **community service fund** allows the museum to hold their funds in a single location, and allows donors to easily support this initiative.



**West Michigan Symphony
Campaign Fund**

As a leader of music and culture in West Michigan, the West Michigan Symphony opened this fund to grow their endowment. This would allow the symphony to expand their programming, like the impactful Link Up program, and continue to provide music and education to the region. The creation of a **community service fund** allows the symphony to raise funds over a three year period in order to engage the surrounding community.



designated funds support the mission of 501(c)3 organizations by designating them as the beneficiaries of the fund.

Benefits: Provide a steady, long-term source of income for one or more nonprofits or community initiatives
Almost any 501(c)(3) nonprofit organization may be designated to receive support for its mission

Allendale Christian School Tuition Assistance Fund
Allendale Lifelong Learners Fund
Janet C. Beukema Fund for Hospice
Martin-Beverley-Todd Bomers Memorial Band Fund
Martin-Beverley-Todd Bomers Memorial Fitness & Aquatic Center Fund
Boomgaard Fund for Seniors
Dan Burt Designated Fund
Chris Christiansen Youth Scholarship Fund
City of Coopersville Recreation Fund
City of Grand Haven
Boardwalk 25th Anniversary Fund
Duncan Park Fund
Thomas N. Cooper Designated Fund
Coopersville Old Kids Fund
Doug Corradini Spirit of #40 Fund
Alex Crum Memorial Fund
Russell H. and Beatrice A. Dornbos Fund
Mark and Lauri Douglas Community Arts Fund
Arno and Judith L. Driedger Fund
Dykstra Family Music Fund

First Presbyterian Church of Grand Haven
Karin Fowler Pastoral Care Training Fund
Scott Fredricks Fund
E. Selena Gerig and John J. Gerig Fund
Grand Haven Area Public Schools
Janet R. Briegel Designated Fund
Patrick Byrne Memorial Fund
Judy Corcoran Porath Memorial Fund
Ronny Kemink Pay to Play Fund
Jan Rempinski Memorial Scholarship Fund for Vocal Music
Grand Haven Rotary Strive Designated Fund
Grand Haven Class of 1953 Fund
Norma V. Green Memorial Art Award
Carol and Winfield Hall Fund for Music
Coral and Peter Hanenburg Memorial Fund
Chuck and Olga Hennesen Fund
Olga A. and Charles J. Hennesen Family Fund
Hill Family Children's Christian Education Fund
Edward and Florence Huizenga Fund
Jocki Klischan Fund
Keith and Bernice Lamkin Fund

Casey Lemieux Fund
Norm and Meg LeMieux Designated Fund
The Robert & Karen Lemmen Children's Fund
Love J. P. Fund
Robert M & Joyce M Lynas Designated Fund
Mosaic Counseling
Designated Fund
Fund for Children and Their Families
North Ottawa Community Hospital
Dr. Larry Poel Sports Medicine Fund
O'Neill Family Fund
OAISD Challenge of Children Fund
George and Nadaire Pardee Fund
Clarence and Bernice Piersma Endowment Fund
Vernon Poest and Roberta Gnerich Poest Designated Fund
Ellna Rotman Camp Fund
Lloyd and Marlene Rotz Designated Fund
Cindy Schemer "I Love to Read" Endowment Fund
Sheridan Park Fund
Lynne Sherwood Fund for Greater Ottawa County United Way
Roy L. and Karen L. Shields, Jr. St. John's Lutheran Church Endowment Fund
Robert and Janice Sluka Fund
Spread the Music Foundation Fund
Spring Lake Christian Reformed Church Mission Endowment Fund
Spring Lake District Library
Outdoor Beautification Fund
Restricted Endowment Fund
Spring Lake Public Schools
Needham Teacher Grant Fund
St. John's Episcopal Church Altar Guild Fund
Struyk Up the Band Fund
Harlind Throop Memorial Christmas Fund
Donald and Elaine Twiss Fund
Bill and Nanci Tysman Designated Fund
Mary "Meime" vandenBerg Fund
Samuel L. Westerman Sunshine Fund
Ruth Wierenga Ghana Fund
David A. West Spirit of the Band Award Fund
Donald and Monica Zahm Memorial Fund
Jean H. Zukowski Designated Fund



Mosaic Counseling

Mosaic Counseling Fund

The impact an organization can have on an individual or community can inspire generosity. Tom Braciak created this **designated fund** because Tri-Cities Ministries—now Mosaic Counseling—provided him counseling after the loss of his wife through a support group for widowed or divorced individuals in 2010. Tom wants others to have counseling available to them for those experiencing relationship problems or suffering hardship due to a loss. This fund will forever provide support to Mosaic Counseling through yearly gifts.



Robert M & Joyce M Lynas Designated Fund

Bob and Joyce held a great love for their family and their community. They were dedicated to serving others and creating a positive impact. Through this, a **designated fund** was established to allow their legacy to continue beyond them and support organizations they were passionate about.



organizational funds provide income streams to support programs and operations at for-impact organizations.

- Organizational funds can be a simple and effective way to create long-term financial sustainability
- The foundation holds and invests the assets, providing responsible and professional fund management

ABC Coalition Fund

Allendale Charter Township Parks and Recreation Fund

Allendale Christian School Endowment Fund

Allendale Historical Society Endowment Fund

Allendale Public School Foundation

Allendale Township Library Endowment Fund

Doris Ewing Red Cross Disaster Relief Fund

American Red Cross

Cynthia Collinge-Golab Volunteer Support Fund
Founding Fund
Ottawa County Fund

Bluebird Cancer Retreats

Endowed Fund
Rosemarie Konopa Cancer Retreat Program Fund

Borculo Christian School Education Foundation

C3 West Michigan's Inclusive Spiritual Connection Endowment Fund
Memorial Cap Fund

Camp Sunshine Endowed Fund

Central Park Players Endowment Fund

Chester Township Recreation Fund

Children's Advocacy Center Endowment Fund

Christian Haven Home Fund

Church of the Saviour Fund

City of Coopersville

Michael's Gift
Roundabout Non-Endowed Organizational Fund

City of Grand Haven

4th of July Fireworks Fund
7th Street Coast Guard Boat Fund
Asset Protection Fund
Boardwalk Maintenance Endowed Fund
Catwalk Maintenance Fund
Cemetery Perpetual Care Fund
Central Park Fountain Endowed Fund
Imagination Station Maintenance Fund
Lighthouse Fund
Memorial Airport Fund
Memorial Airport Immediate Needs Fund
Mulligans Hollow Ski Bowl Cap Improve Fund
Musical Fountain Fund
Pier Safety Fund
Public Artifact Preservation Fund
Public Artifact Preservation Non-Endowed Fund
Public Safety Beach Safety Fund
Splash Pad Fund

Coast Guard Festival

Fireworks Forever Fund
Fireworks Fund

Coopersville Area District Library

Memorial Fund
Robert and Judy VanDongen Fund
Westrate Children's Library Endowment Fund

Coopersville Area Historical Society

Building Fund
Endowment Fund

Coopersville Area Public Schools

Athletic Fund
Coopersville Education Fund
NEO Forum Fund
Performing Arts Center Endowment Fund

Coopersville Cares Endowment Fund

Coopersville Farm Museum, Inc. Fund

Coopersville Reformed Church Fund

Covenant Life Church Endowed Fund

Crockery Township Fire Department Endowment Fund

Eastern Ottawa County Silent Observer

FFA Agricultural Education and Leadership Fund

Family LIFE Center of West Michigan

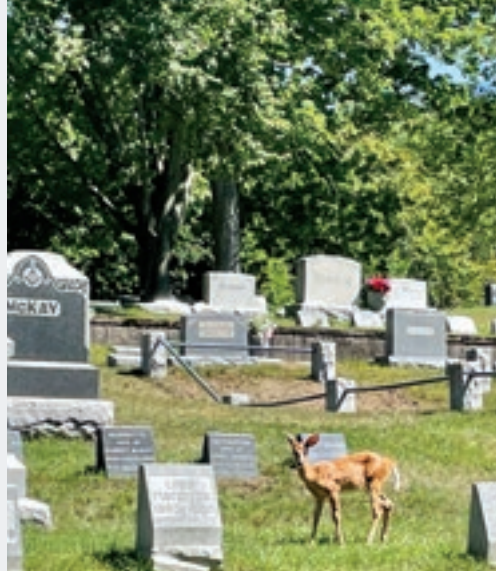
First Presbyterian Church of Grand Haven

Alpha Fund
Memorial Mission Fund
Omega Fund



City of Grand Haven Asset Protection Fund

The City of Grand Haven has numerous iconic locations and public spaces, most notably the lighthouse, that require care and protection in order to preserve them for everyone in the community—resident and visitor alike—to enjoy. Due to a series of vandalisms, the City decided to open a fund dedicated to the protection of these places. This **organizational fund** allows the city to allocate dollars toward the care, security, and upkeep of important icons in the community.



City of Grand Haven Cemetery Perpetual Care Fund

This organizational fund is dedicated to the care and maintenance of the Lake Forest Cemetery managed by the City of Grand Haven. By opening an **organizational fund**, the city is able to dedicate funds specifically toward keeping the cemetery preserved and beautiful. By housing these funds with the community foundation, the funds can be invested in order to ensure the continued growth of support toward this purpose.



Wright Tallmadge Firefighters Association Fund

The passionate men and women from the Wright Tallmadge Firefighters Association strive to save lives when disaster strikes. They have started an **organizational fund** for rescue tools and trainings to save lives. As their funds grow, they will be able to train their association and promote safety for all citizens in, around, and traveling through the West Michigan area. We hope they never have to come to our rescue, but when they do, we are glad they are there.

Four Pointes
 Janet R Briegel Non-Endowed Fund
 Endowed Fund
 Gail Ringelberg Special Needs Fund

Richard and Rosemary Geertsma Fund for GHCS

GHHS Choir Endowment Fund

Girl Scouts of Michigan Shore to Shore
 Endowment Fund

Gracious Grounds Endowment Fund

Grand Haven First Christian Reformed Church
 Endowed Fund
 Non-Endowed Fund

Grand Haven Public Schools
Orchestra Endowment Fund
 Science Olympiad Programs Fund

Eugene "Gene" Roth Memorial Athletic
 Endowment Fund

Grand Haven Christian School Tuition
 Assistance Fund
 Endowed Technology Fund

Grand Haven Rotary STRIVE Designated
 Endowment Fund

Grand Haven Schools Foundation Endowment Fund

Greater Ottawa County United Way
 Homelessness Prevention Endowment Fund
 Volunteer Center Designated Fund
 Volunteer Center Endowment Fund

Harbor Humane Society Endowment Fund

Humanity for Prisoners
 Endowment Fund
 Legacy Fund

International Aid Endowment Fund

Kitchel-Lindquist-Hartger Dunes
 Endowment Fund
 Non-Endowed Fund

Lakeshore Baptist Church Fund

Lakeshore Ethnic Diversity Alliance Endowment Fund

Lamont Christian School Foundation Fund

Land Conservancy of West Michigan Fund

Loutit District Library Endowment Fund

LOVE in Action of the Tri-Cities Fund

Paul and Minnie Luytjes Fund for Second
 Reformed Church

Michigan Aviation Education Foundation
 Education Fund
 Fontana Fund

Muskegon Museum of Art
Capital Campaign Fund
 Endowment Fund

North Ottawa Amateur Radio Club

North Ottawa Community Hospital
 Samuel L. Westerman Nursing Education Fund
 Mary's Wish Hospice Fund

Ottagan Addictions Recovery (OAR)
 Endowment Fund

Ottawa Area Intermediate School District
 Roerink Visual and Hearing Impaired
 Special Education Fund

Miles of Smiles Endowment Fund

James & Wendy Onderlinde Family Fund for GHCS

Ottawa County Parks
 Foundation Inc
 Nature Education Center Endowment Fund
 Ray & Alma Statema Park Stewardship Fund

People Center Endowment Fund

Kenneth Ranta Fund for The Little Red House

R.E.A.D. Endowment Fund

Reel Perspectives Fund

Remembrance Church Endowment Fund

Resilience: Advocates for Ending Violence Fund

Senior Resources of West Michigan Endowed Fund

Mary Ann Sherwood Fund for Mosaic Counseling

Ski Bowl
 Designated Endowment Fund
 Immediate Needs Fund

SLJGA Fund

Spring Lake Christian Reformed Church
 Endowment Fund

Spring Lake District Library Endowment Fund

Spring Lake Junior Sailing Association
 Endowed Fund
 Immediate Needs Fund

Spring Lake Presbyterian Church Memorial Trust Fund

Spring Lake Schools Foundation
 Endowment Fund
 Carol Martin Fund

Spring Lake Township Parks and Recreation Fund

**Kirsten Terborg GHCS Tuition Assistance
 Memorial Fund**

Tri-Cities Area Habitat for Humanity Endowment Fund

Tri-Cities Family YMCA
 Endowment Fund
 Pete Hill Fund for Y Kids

Tri-Cities Historical Museum
 Drake-Middlemist Heritage Fund
 Endowed Fund
 Non-Endowed Fund

Tri-Cities Strikers Soccer Club Endowment Fund

United Methodist Church of Coopersville
 Memorial Fund

Midge Verplank Coast Guard Fireworks Fund

Veteran's Memorial Fund

Summer Concert Series Endowment Fund

Walden Green Montessori Endowment Fund

West Michigan Academy for Arts and Academics
 Endowment Fund

West Michigan Agricultural Education Center Fund

Wetland Watch Environmental Education Fund

Wright Tallmadge Firefighters Association Fund



Grand Haven Memorial Airport Immediate Needs Fund

This non-endowed **organizational fund** was established in memory of Mary Rawlinson Creason in order to support the ongoing maintenance and operations of the Grand Haven Airport. Mary was a pillar of the Grand Haven community as well as the aviation community. Her support of women in aviation, of programs to support youth pilots, and local community events highlight her passion for life and love of flying. This fund will allow her legacy to support local aviation needs far into the future.



Grand Haven Area Public Schools Orchestra Endowment Fund

As proud supporters of the Grand Haven Orchestra Program, the Orchestra Boosters of Grand Haven (OBGH), are an independent nonprofit dedicated to the promotion of educational excellence through music and the support of an exceptional orchestra program. The OBGH helps to provide financial support for the Grand Haven Orchestra Program through various fundraising and support activities. The establishment of this **organizational fund** will help enhance and ensure ongoing support.



scholarship funds *make educational dreams come true.*
When you invest in the next generation with post-secondary education assistance through scholarships, you're building a foundation for a brighter tomorrow.

Allendale Chamber of Commerce Scholarship Award Fund
Allendale Community Foundation Scholarship Fund
Jack Feldt Ambucs Memorial Fund
Athena Scholarship Fund
Bailey Scholarship Fund
Lindsey Bakale Memorial Scholarship Fund
Ray and Sue Barrett Scholarship Fund
Charles (Charlie) A. Bassett Endowed Scholarship Fund
Richard & Annette Bethke Education Fund
George Bitner Scholarship Fund
Martin-Beverley-Todd Bomers Memorial Scholarship Fund
Chris Bradley Endowed Memorial Scholarship Fund
Janet R. Briegel Scholarship
Dr. Fredrick B Brown Fund
James W. Jr. and Jane T. Brown Fund
Jack and Libby Bush Scholarship Fund
Ronald C. Bush Memorial Scholarship Fund

David and Mary Jo Busman Family Scholarship Fund
Careerline Tech Center Paraprofessional Scholarship Fund
Coopersville Scholarship Fund
Staci Cheadle Memorial Scholarship Fund
Geri Coccodrilli Culinary Scholarship Fund
Craig Councilor and Valerie Guttowsky Scholarship Fund
Alex Crum Scholarship
Dake Community Manufacturing Scholarship Fund
Detter Family Foundation Education Scholarship
Detter Family Foundation Leaders in Mathematics and Science Scholarship
Ken and Barb DeWitt Scholarship Fund
Erickson Education Fund
Kevin Ernst Memorial Scholarship Fund
David Day Eppelheimer Fund
Wallace K & Jane Ewing Scholarship Fund
Bertha M. Fase Memorial Scholarship Fund
Scott A. Flahive Memorial Scholarship Fund

Floto-Peel Family Fund
Kenneth and Janis Formsma ESL Scholarship
John L. and Victory E. Frantz Scholarship Fund
Fugazzotto Scholarship Fund for Visual Arts Students
Wilma Jean Fynewever Nursing Scholarship Fund
Gauthier Family Fund
GHACF Scholarship Fund
Tom Gifford Scholarship Fund
Grand Haven Offshore Challenge Scholarship
Mitz Hammond Hessmer Scholarship Fund
Barbara and Nicole Heacox Foreign Study & Travel Fund
S. J. Hecksel Memorial Scholarship Fund
Marjorie M. Hendricks Environmental Education Fund
Michael Herman Scholarship Fund
Hierholzer-Fojtik Scholarship Fund
J. R. Hilliard Memorial Scholarship Fund
Vernon J. and Shirley M. Hipwell Family Music Scholarship Fund
Hoffman Family Scholarship Fund



Bob Warren & Carole Curry-Warren Scholarship Fund

Bob and Carole established a **scholarship fund** with the idea that it's never too late to seek additional education. Carole herself was fortunate enough to receive financial assistance when she decided to go back to school. Through this, Carole wanted to pass on this opportunity to others over 30 years old who are looking to further their education or return to school.



David Day Eppelheimer Fund

Dave Eppelheimer was known throughout West Michigan as a beloved kindergarten teacher for Coopersville Area Public School (CAPS), as well as a 4-H leader, Christmas antique business dealer, and square dancer. Dave died far too soon in 2017, but, thanks to his brother and sister-in-law, Don and Linda, he continues to make an impact on Coopersville Schools.

Dave's life lessons with the Coopersville Community will continue through this **scholarship fund**. Every year, a Coopersville High School graduate pursuing a degree in education will receive a scholarship to assist them in their college or university studies. Dave would be happy to know that he continues to help students through the scholarships and grants given in his name.



CAPS Community Trails & Outdoor Learning Center Fund

Coopersville Area Public Schools (CAPS) has a new **community service fund** for the CAPS Community Trails and Outdoor Learning Center near the school pond. CAPS currently uses the well-maintained park as a venue for outdoor education for preschool through 12th grade.

The half mile from East Street to Randall Street (parallel to the railroad tracks) is paved with crushed asphalt, making it accessible by all. The trail will connect Walker to Grand Haven via the North Bank Trail, and the community will find fresh air, a chance to meet outside with friends safely, and opportunities for physical activity.

Hofma Scholarship Fund
Dale Janke Scholarship Fund
Seth Koehler Central High School Fund
Paul J. Laninga Memorial Scholarship Fund
Larson - Veneklasen Outdoor Education Scholarship
Rick and Beverly Lattin Education Fund
Laughlin Family Scholarship Fund
Jack W. Leatherman Family Fund
Leitner Family Fund
Casey LeMieux Central-Mary A. White Schools
PTA Fund
Friends of Loutit District Library
Loutit Foundation Scholarship Fund
Pat and John MacTavish Fund
Mandy's Promise Scholarship
Ross McBride Scholarship Fund
Randal and Marilyn Mergener Scholarship Fund
Mary E McGinnis Social Work Scholarship Fund
David James Merkle Memorial Scholarship Fund
Kyle Moreland Memorial Scholarship Fund
Melissa Skiera Myers Scholarship Fund
Nelson Family Scholarship Fund
North Bank Scholarship FundNorth Ottawa
Hospital Auxiliary Fund
Alyssa Olafson Memorial Scholarship Fund
Roy and Joyce Overway Family Fund
Marvin R. and Pearl E. Patterson Family Scholarship Fund
P.E.O. Chapter DS Scholarship Fund
Dr Larry Poel Field of Medicine Scholarship Fund
Edward and Barbara Post Family Scholarship Fund
Terry Linda Potter Scholarship Fund

David and Mary Race Vocational/Technical
Scholarship Fund
Richard and Barbara Race Scholarship
David A. Reeves Scholarship Fund
Frances Claire Reinecke Scholarship Fund
Jacob L. Reinecke Memorial Scholarship Fund
Daniel L. Reiss Memorial Scholarship Fund
Harold and Eleanor Ringelberg Scholarship Fund
Charles Robertson Scholarship Fund for Education
Runschke Family Scholarship Fund
Charles and Eleanor Rycenga Education Fund
St. John's Lutheran Church and School Scholarship Fund
St. Patrick's & St. Anthony's Church Scholarship Fund
Millicent Mary Schaffner Endowed Memorial
Scholarship Fund
David and Jinny Schultz Family Fund
David & Sharon Seaver Family Scholarship Fund
in Memory of Timothy D. Seaver
Del Shannon Memorial Scholarship Fund
Ken and Sandy Sharkey Family Scholarship Fund
Susan Shattuck Scholarship for Future Nurses
Lynne Sherwood Scholarship Fund
GH Rotary / Lynne Sherwood STRIVE Scholarship
Marion A. & Ruth K. Sherwood Business
Scholarship Fund
Marion A. & Ruth K. Sherwood Current College
Scholarship Fund
Marion A. & Ruth K. Sherwood Education
Scholarship Fund
Marion A. & Ruth K. Sherwood Engineering
Scholarship Fund
Marion A. & Ruth K. Sherwood Medical
Scholarship Fund

Marion A. & Ruth K. Sherwood Michigan College
Alliance Scholarship Fund
Miller G. Sherwood Family Scholarship Fund
Maryadele Sparks Scholarship Fund
Spartanwill Scholarship Fund
Spring Lake High School Social Studies Prize
Frank and Virginia Such Memorial Scholarship Fund
Edward P. Suchecki Family Scholarship Fund
Henry D. and Ruth G. Swartz Family Fund
Clifford & Hope Taylor Scholarship Fund
Grace Thatcher Scholarship
H. Wayne VanAgtmael Cosmetology Scholarship
Marv VandenBosch Scholarship Fund
Lorraine VanBeukering Scholarship Fund
VFW Post 2326 Ward-Goff Memorial Scholarship Fund
Bob Warren & Carole Curry-Warren Scholarship Fund
Waters' Family Scholarship Fund
Louise Wachter Wickham Scholarship Fund
West Michigan Nursery & Landscape Association
Scholarship Fund
Mary E. Wilsberg Scholarship Fund
Paul Wolbrink Scholarship Fund
Women's Club of Grand Haven Scholarship Fund
Daryn Renee Worpel Scholarship
Herman J. and Helen Wyngarden Memorial
Scholarship Fund
Zenko Family Fund
Leo Zupin Memorial Scholarship Fund

2021 GHACF Scholarship Committee

Our scholarship committee is made up of board members and representatives from the community. Together, they make the critical decisions to help area students attain a post-secondary education.

Cindy Anderson (Chair, Board), Keith Konarska (Board), Debra Mann (Griffin Principal), Kim McLaughlin (TCAN), Angie Prieditis (GHHS Counselor), Susan Tater (OAISD), Naomi VanSingel (SLHS), Julia Wagner (SLHS), Aaron West (SLPS Principal).



building the future together

"The combination of generous donors and amazingly talented students fills me with gratitude for all our community foundation has enabled, and confidence that the future of our community will remain strong."

— Cindy Anderson, Scholarship Committee Chair, 2021

Thanks to our generous donors, 224 area students received a combined \$655,095 in scholarships in 2021.

334 applications received



344 applications received

\$621,140 awarded in scholarships



\$655,095 awarded in scholarships*

220 students awarded a scholarship



224 students awarded a scholarship

\$2,800 average award package



\$2,370 average award package
(awards range from \$285-\$10,000)



*total includes renewal installments

17

Scholarship recipients were awarded a multi-year scholarship



Who are our recipients?

72% High School Seniors | 28% Currently in College

Multi-Year Scholarships

awarded in 2021

14

renewable for 2 years

3

renewable for 4 years

20 students received the next installment of their 2- or 4-year award

Of the \$655,095 awarded in 2021, 27% was to the first year, or a renewal year award of a multi-year award



"I am thankful for each and every one of you who donated to this fund so I could have the opportunity to advance not just my education, but my dreams. We all have dreams, and your generosity has made my dreams easier to reach."
—Carli Brodie

80%

of first-generation student applicants received scholarships

First-generation students

- » Come from a home where neither parent attended college, or their parents attended but didn't earn a bachelor's degree
- » Tend to enroll in and complete post-secondary credentials at a lower rate than their peers



That's
49 students!

investing together

The GHACF Impact Investment Committee was formed at the end of 2019 to explore a different option for investments. In February 2020, the GHACF board approved a \$1.5 million investment with Michigan Community Capital (MCC) to develop workforce housing in Northwest Ottawa County. This investment aligned a portion of the foundation's assets with the GHACF's mission and goals, providing social benefits to our community by investing in Main Street, not just Wall Street.

This partnership with MCC is the next step in the journey that began with Housing Next, an initiative the GHACF cofounded in 2017 focused on supporting housing solutions for all income levels in our community. Solving the workforce housing crisis takes innovative thinking, and we believe this investment, together with collaborating with other organizations throughout Ottawa County, will help get us there.

"With this reduced cost of capital, MCC can provide housing at a price-point not being built by the private sector," said Eric Hanna, President and CEO of MCC. "Homes priced between \$150,000-\$250,000 target a critical sector of middle-income workforce in the area. These families face a shortage of housing that puts a strain on economic prosperity and job growth."

"This investment is a key piece of the puzzle to help reduce the cost of housing in the area." – Eric Hanna

MCC lends and invests in income-diverse, race-diverse, and occupation-diverse communities to counter gentrification and create upward mobility and wealth building opportunities for underserved individuals and families in Michigan.

Since receiving funding, MCC has moved forward with an affordable housing development on Comstock Street in Grand Haven.

"[This] investment [will help] **bring 30 homes to Grand Haven that will be affordable to middle-income households earning between \$39,000-\$65,000 annually,**" said Marilyn Crowley, Vice President, Investment of MCC. "These homes will be high-quality, energy efficient, and, most importantly, affordable to many families working in the region."

These investments complement the GHACF's current investment policy, programs, and grant-making activities and establish a process for the expanded investment and development of resources in the community. The foundation continues to follow its investment policy and these impact investments will allow further diversification of our portfolio.



Audited Financial Statement

Effective stewardship of philanthropic assets is paramount to building permanent charitable funds that strengthen our community.

Through December 31, 2020

Assets

Cash & Cash Equivalents	\$972,398
Investments	\$158,975,963
Notes Receivable	\$681,444
Other Assets	\$4,477
Property & Equipment (Net)	\$1,256,583
Total Assets	\$161,890,865

Liabilities

Accounts Payable	\$7,562
Grants Payable	\$723,088
Charitable Gift Annuities Payable	\$102,548
Funds Held as Agency	\$8,810,984
Total Liabilities	\$9,644,182

Net Assets without Donor Restrictions	\$152,246,683
---------------------------------------	---------------

Total Liabilities and Net Assets	\$161,890,865
---	----------------------

2020-21 Investment Committee



Mark Pereira, Chair
General Manager, Brilliance Publishing/Amazon

Barb VanHeest
Relationship Manager, Chase Business Banking

Shirley Woodruff
Vice President, Heritage Property Management

Rob Peel
Branch Manager - Grand Rapids, Holland, and Midland, MI offices; Managing Director
Baird Private Wealth Management

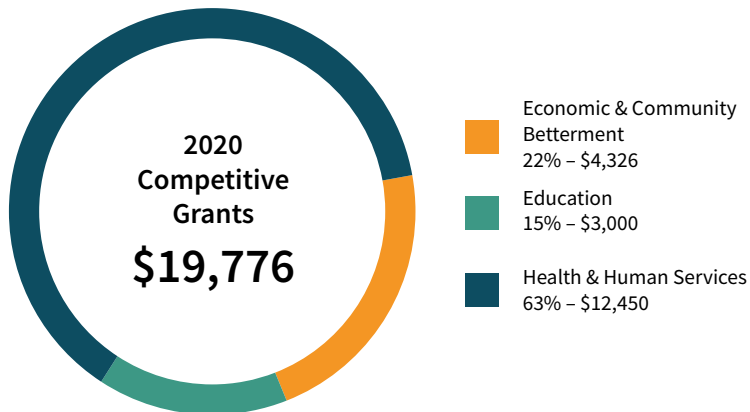
Abby Selby
Founder & CEO, Selby Tax & Accounting, P.C.

Coopersville Area community foundationSM

Over the past year, our community has pulled together and demonstrated why this is such a wonderful place to live. We've lived by the mantra to "hold each other up" and invite you to do the same.

2021-22 Advisory Board

Top row: Ira Engeltjes (Chair), Marty Alexander (Vice Chair), Cori Conran (Secretary). Middle Row: Cheryl Annen (Treasurer), Matt Hehl, LaVonne Marshall. Bottom row: Kurt Meinders, Kelley Monterusso, Kathlene Sheridan



Assets
\$7,382,501
(as of 12/31/20)



86 Funds
(including FASB funds)



Total Granted
\$332,340



CAYAC

The Coopersville Area Youth Advisory Council is made up of high school students from the Coopersville area. CAYAC members meet during the school year to discuss and assess youth issues prevalent in the community, as well as to review grant proposals made to benefit youth in the community.

Members of CAYAC have the opportunity to make real change by awarding grants to projects which make a positive impact on the community.



Granted by CAYAC
\$13,500

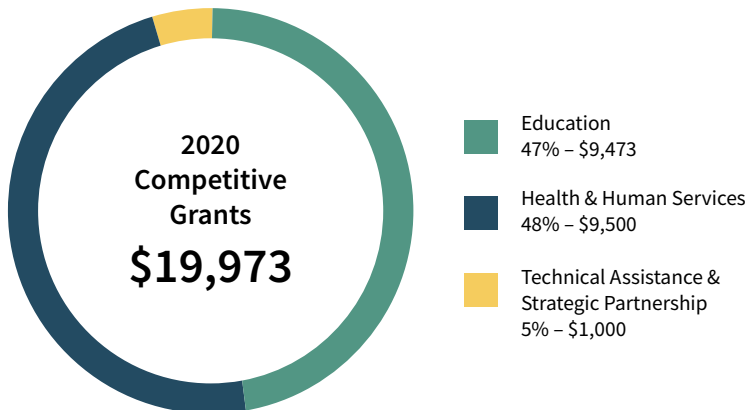
Allendale

community foundationSM

The Allendale community has continued to demonstrate why we are #AllendaleStrong, and we're proud to be a part of it.

2021-22 Advisory Board

Top row: Jim Beelen (Chair), Kellen Brusveen (Vice Chair), Kristi Roelofs (Secretary). Middle row: Gwen Luban (Treasurer), Mark Allen, Rebecca Casler. Bottom row: Nicholas Lillie, Don Lipinski, Hilda Wittingen



Teacher Mini-Grants

The Allendale Community Foundation invites area schools to apply for mini-grant funding to try out a new idea or buy the “extras” for an already great lesson plan or project.

Grants of up to \$250 are awarded to teachers to enhance their instructional program. Any teacher, counselor, or administrator employed in a public or private school located in the Allendale area is eligible to apply. Grants are limited to one per classroom and one per teacher per school year.



26 Teacher Mini-Grants
\$6,223

Assets
\$3,609,183
(as of 12/31/20)

44 Funds
(including FASB funds)

Total Granted
\$94,921

empowering together

As we've all learned this past year, kids are resilient. Our Youth Advisory Council was no different, as they volunteered, awarded grants, and continued to make a difference in the lives of area youth—all from behind a video screen.

Congratulations to our seniors who graduated in 2020!



Coryn French



Lauren Smelker



"I enjoyed the arts show hosted at Jumpin' Java, getting to talk to the youth who entered art was amazing because it allowed me to interact with people who through YAC I've given a platform to highlight youth achievement." —*Ian Rant*

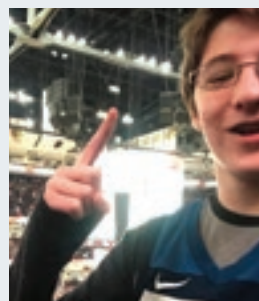
"I joined YAC because I wanted to leave a positive, enduring impact on our community, especially given the opportunities it has allowed me to pursue. I am so grateful for the chance to work with such an empowering group of people as this one!" —*Angela Tran*

inspiring acting passionate powerful innovative courageous creative imaginative capable resourceful driven strong intentional empathetic now impactful advocates authentic resilient persistent exuberant

"One of my favorite YAC grants was when we funded the wheelchair basketball tournament. This was such an amazing program and I'm glad that we got to see the impact of it and participate. I also love when we sponsored the wall mural at Seven Steps Up because I get to see it every time that I drive through Spring Lake and it makes me happy to see our support in the community."

—Madigan Lautzenheiser

"Some of my best YAC memories include being sworn in as vice chair with the presidential oath of office, playing laser tag with some very competitive middle schoolers (and the other YACers, of course), all of the time we spend together as a YAC. I couldn't ask for a kinder, smarter, more interesting group of people!" —*Madison Rogers*



Oliver Shampine



Sophia Raha



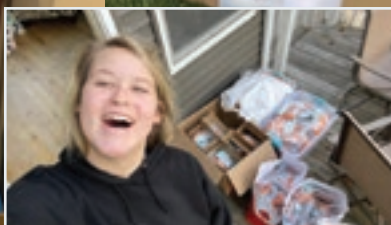
» Youth are ◯◯ ◻

Since 1991, YAC has had over 250 members and has awarded over \$2.1 million in grants to programs that address relevant, pressing issues that face area youth. It is currently the largest YAC in the state of Michigan!

Hand2Hand received funding from the Youth Fund, as well as the foundation's Emergency Human Needs Fund and the Community Relief & Recovery Fund.

In mid-November, YAC partnered with Hand2Hand to nourish over 8,000 students by assembling breakfast packs. Hand2Hand delivered trailers right to our parking lot and YACers (as well as foundation staff) were able to pick up the items and assemble individual food packs at home.

Each student was responsible for assembling 250 packs and members were able to see their grant dollars in action.



Grant Priorities

Mental & Emotional Well-Being: Grand Haven High School Staff & Student Wellness, Mental Health Matters at Spring Lake High School, and Project CARE at Walden Green Montessori

Physical Well-Being: Water safety education at the Tri-Cities Family YMCA

Community & Cultural Well-Being: Counselor engagement at Camp Sunshine



18 Grants by YAC
\$99,122

We Value

Empathy: to understand the needs of the youth in our community

Integrity: to make equitable decisions for the youth of our community

Collaboration: using innovation and teamwork

Open-mindedness: through a passionate and diverse group of youth representatives

2020-21 Youth Advisory Council

12th Graders: Grand Haven: Coryn French, Madigan Lautzenheiser, Ian Rant (Treasurer), Madison Rogers (Chair and Grants & Program Committee Representative), Oliver Shampine, Lauren Smelker, Angela Tran; **Home School:** Sophia Raha. **11th Graders: Grand Haven:** Gavin Hubner, Aashray Mandala (Vice Chair), Lexi Naperala, Jacob Marcus, Elena Yu; **Spring Lake:** Ryann Gilchrist, Sadie Williams. **10th Graders: Grand Haven:** Paige Peterson, Jake Roberson, Kyla Streng, Clara Thelen; **Spring Lake:** Caroline Henry



honoring together

Thank you to those who have chosen the community foundation as a way to enhance the community for future generations through a planned gift. Leaving a gift to the community foundation allows individuals to support the causes that they are most passionate about—forever.

Our annual Legacy Society Event is when we traditionally remember and honor the legacies who were realized since the last time we gathered. For the second year in a row, we cancelled our annual event due to COVID-19, and we are dedicating the following space to memorialize and show our deep appreciation to the following legacies who have been realized this past year.



Mary Kay Alguire

Mary Kay led a life of kindness, humility, and service toward her family and community. She treated everyone she met with respect, creating a positive presence both during her career as an educator as well as by volunteering throughout the community. She instilled an ethos of kindness and inclusion within her children and grandchildren and always sought to see the best in others.

Her dedication to her community, her church, and her family is reflected in her giving spirit and commitment to the betterment of the Grand Haven area.



Janet R. Briegel

Janet Briegel committed herself to our community and its future, our children. Born and raised in Grand Haven, her love of the community showed in the hours she dedicated to local organizations, activities and volunteer work. From creating music, to educating at the Tri-Cities Historical Museum, Janet shared her passions and knowledge with everyone.

Janet's long career as an educator at Ferry Elementary School impacted countless lives, and her support will continue to benefit area youth forever, through both her scholarship fund, which assists students pursuing careers in education, and her designated fund, which supports Ferry Elementary students.

Legacies recognized from August 2020-September 2021



Richard C. Briegel

Dick devoted his time and energy to serving the community through his works and charitable spirit. He served on the foundation's Board of Trustees from 1995-2001, helping guide us in our support of Northwest Ottawa County. Beyond this, he consistently and steadfastly impacted our community through his volunteering of time and energy in various leadership positions.

As donors and fund holders, Dick and his wife, Patricia, generously supported local education, religious, and health and human service-related organizations.



Mary R. Creason

Mary lived a life full of adventure and opportunity—ideas she strove to share with everyone she could. Mary loved to fly, a passion that led her to support countless youths in pursuing aviation. She had a variety of roles as an educator and advisor for aeronautics, generating a lot of local support for aviation through her work at the Grand Haven Memorial Airport.

The creation of the Michigan Aviation Education Foundation was one way Mary, and her fellow pilots, could forever impact the lives of aviation students through scholarships. The Grand Haven Memorial Airport Greatest Needs Fund was also established in memory of Mary to support the ongoing general operations of the Grand Haven Memorial Airport. Her love for life, for aviation, and for our community created an aura of adventure and aspirations for the future among all who met her.



Gretchen Garrison

Gretchen was dedicated to her family and her community. She was known to be generous and kind, with many friends whom she enjoyed spending time with.

Her dedication to her family and friends also extended to her support of her community. Her legacy is reflected in the establishment of the Dr. Edgar and Gretchen Garrison Family Fund, which will help support the greatest needs of the Grand Haven area. By supporting the greatest needs of the community, Gretchen can show her continuing love for her family and friends.



Nancy Moss

Nancy lived a life full of adventure and passion—something she instilled in others through her long career in education. She supported the educational successes and futures of students through a variety of programs, from scholarships to creativity studies to mission trips.

Nancy's involvement in the community was widespread. She spent her time volunteering and enjoying the beauty of the outdoors, especially through traveling. She utilized her many talents to not only live an extraordinary life, but also to encourage the success of our future through our students and educational system. Nancy's commitment to our community continues through her legacy and dedication to the musical education for children with special needs.



Pearl E. Patterson

Pearl committed herself to our community in a myriad of ways. She cared for the community through her church's activities, as well as through the Red Cross. Her attention to the health of our community extended into the natural world, through Pearl's great love and concern for nature and animals. Her dedication as a Scout leader for both the Girl Scouts and the Boy Scouts allowed her to guide many youth.

Pearl will forever support the students of our community through her scholarship fund, allowing them to pursue their dreams and find a fulfilling future.



Mary A. Teitsma

Mary was an active community member whose kindness is reflected in her love of the Tri-Cities. As one of the first members of 100 Women Who Care, Mary supported numerous programs and projects that promoted the betterment of our community. She and her husband, James, also saw that the continued success and future of our community rests on the foundations laid today. Through this, they created a named greatest needs fund at the Grand Haven Area Community Foundation in order to support the needs of Northwest Ottawa County, forever.



John P. VanEenenaam

John led a life of continual education and generosity. He lived a life in service to the community, promoting the success of students and future lawyers through his mentoring and support. His various leadership positions showed the depth of his care for our community.

He also brought joy into West Michigan through the West Michigan Banjo Club. His spirit and dedication to this community reflected the idea that all acts done in service of others help to build a brighter future for everyone.



Frederic P. vandenBerg

Rick lived a life of humble service, quiet leadership, and grace. His work for the community reflected his deep love for West Michigan. As long-time generous donors to the foundation, he and his wife, Donna, believed in the need to preserve the icons of our community.

When Rick's sister passed away, he and Donna established the Mary "Meime" vandenBerg Fund in her memory, which will support the Grand Haven Lighthouse Conservancy and the Kitchel-Lindquist-Hartger Dunes in perpetuity.

The following people have committed to leaving a gift to the foundation after they pass. If you would like more information about joining the Legacy Society, please contact Chris Riker.

Tom Alguire	David & Mary Eagin	Nina McKeough-Reed	Budge & Marilyn Sherwood
Donald & Cindy Anderson	Martha Erickson	Larry & Anne McLaughlin	Gary & Karen Sherwood
Len & Wanda Anderson	Jon & Glenda Eshleman	Damon & Kim McLaughlin	Karen Shields
David Baas	Steve & Mary Jane Evink	Douglas McNeil	Dorothy Sikkema
Paula B. Baas	Wallace & Jane Ewing	Sandra & Frank Mercurio	Gerald & Linda Slagel
William & Mary Baker	Patricia Fisher	Muriel Mersereau	Robert E. & Janice D. Sluka
Steven & Kathryn Bandstra	John & Kathryn Fortino	Robert J. & Donnell S. Mersereau	Gary & Jorri Smith
Sue Barrett	Patrick & Robin Fraker	Jean Fisher Mesler	Julie Smydra
Charlie & Mary Jo Bassett	Barbara Fugazzotto	Nancy E. Middlebrook	Linda S. Shores &
Charles (Chad) Bassett II	Edward "Tony" Gage	Dr. James Moore &	R. Michael Snodgrass
Paul Bedient	Rob & Jill Garrison	Patricia Eddington	Rick & Mary Ann Snyder
William & Carolyn Benes	Tom Gifford	Phyllis A. & Darell L. Moreland	Larry & Stephanie Staab
Carroll & Dottie Bennink	Edward & Laura Grafton	Steven & Sandra Moreland	Tyler M. Stafford
Patrick S. Berg	Randy & Nancy Grevel	Evelyn Morford	James J. & Sheila G. Steffel
Jeff & Tammy Beswick	Edward & Nancy Hanenburg	Donald Moss	Peter & Carolyn Sturuss
Susan & Mark Blauvelt	Janet A. Harestad	Peter & Sheila Murdoch	Kent & Bonnie Suchecki
William & Katherine Blessing	Steve & Tami Harvey	Nancy & Charles Nagtzaam	Ruth Suchecki
Mary Jane Boettcher	Shirley Hipwell	John & Kathryn Nash	Dennis & Carol Swartout
Norm & Carolyn Boeve	Andy & Alice Hoban	Raymond F. & Barbara J. Nelson	Dan & Ann Tabor
T. Arnold & Lynne Boezaart	Bud & Charyn Hoffman	Matthew M. & Kathryn E.	Philip & Mary Kay Taylor
Calvin & Evelyn Bosman	Stephen & Joy Hohmeyer	(Jerovsek) Olds	James Teitsma
Barbara Boyer	Judith W. Hooyenga	Greg Oleszczuk & Jeanine	Ken and Mary Terpstra
Tom Braciak	Jim & Deb Hovinga	Taghon-Oleszczuk	Guy & Alisha Terrill
Patricia K. Briegel	Paul & Diana Hugo	James & Ruthann Olthoff	Peter & Judy Theune
Budd & Melinda Brink	Sherry Jackoboice	Roy & Joyce Overway	Janet Tomhave
James & Jane T. Brown	Tom & Barb Jackoboice	Jill & Tim Parker	Joseph & Carol Uridil
Fred Bruhn	Mary Jacobson	Dan & Eileen Paull	Edith VanBurgal
John & Claire Bryson	Nelson & Lana Jacobson	Elizabeth Peel	Donna vandenBerg
Cheri & Ron Bultje	Nancy Jacobson Bueche	Thomas C. Pegg	John Vander Kooi
Kevin Carbary & Carol Alexander	Bari S Johnson	Anita Pellegrom	Marianne VanEenenaam
Nancy Carlyle	Holly & Erick Johnson	Matthew & Joyce Pellegrom	Dale & Susan VanZantwick
Cyndi Casemier	Dorothy "Dottie" Johnson	Marsha Peterson	Elinore "Norna" Verplank
Stacey Cassis & Arianna Morales	Roger & Susan Jonas	John Planteroth	L. J. "Midge" Verplank
Joe & Cheryl Clark	Roger & Susan Jonas	Larry Poel	Tony & Monica Verplank
Margaret Coffey	Jeff & Kellie Jullie	Craig & Coreen Porter	Ken & Sherri Vis
John Cook & Jane E. Leonard	Aurthur & Janice Kanine	Edward & Barbara Post	Margot L. Van Dis & Jeffrey R. Miller
Harold "Pete" & Cindy Crane	James & Mary Keating	Shirley A. & Ted A. Poulton	Robert & Deborah Wagenmaker
Kennard & Wendy Creason	Katherine L. Keck	Joseph & Nancy Prinzi	David & Patricia Walborn
Thomas & Michelle Creswell	J. Gregg & Mary Keeton	Bill & Aileen Redeker	Ruth Wallinga
Scott Curtis	Jack & Joanne Kelley	Field Reichardt	Walt & Daphne Weber
David & Carol DeBlaey	Sanford "Mark" & Kristine Kelley	Rosanne M. Reiss	Amy L. West
Terry & Sandi DeGroot	Barbara Kelso	Gerald Retzlaff	Andrew Wheeler
Daniel & Brenda DeVea	Phil & Jane King	Nancy Rhem	Curtis & Terri Whiting
Barbara DeWitt	Thomas & Kimberly Kitchen	M. Gary & Pennie Robertson	David & Mary Whiting
Ralph DeYoung	Dave & Sandy Klaassen	Lloyd Rotz	Annette Whitney
Virginia Dornbos-Rolstone	Kurt & Jennifer Klaassen	Sylvia & Ron Ruscett	Nancy & Warren Wildeman
James A. & Dulce Doss	Mark A. & Elizabeth Kleist	Robert & Bobbi Jones Sabine	Leslie Wills
Megan & Jamie Doss	Raymond & Betsy Komray	Dan & Carol Scanlan	Paul Withun
Joyce Draft	Scott & Madonna Kramer	James Schmidt & Karen West	David & Karen Young
Dennis & Barbara Dryer	Ken Lahey	Richard & Carol Scholler	Rosemary A. Zink
Dwight & Gloria Durkee	Keith & Bernice Lamkin	David & Jinny Schultz	Michael & Sasha Zolik
Myrna Duthler	Tom & Jackie Laughlin	David & Sharon Seaver	Douglas & Janice Zuidema
Jim & Marla Dykstra	Philip M. & Betty J. Leech	Kenneth & Sandra Sharkey	Marian Zupin
Nancy Dzierzawski	James & Nancy MacLachlan	William & Susan Shattuck	
	Angelo & Laura Marasco	John & Patricia Shears	

board of trustees



*Barb VanHeest
Chair*



*Mark Pereira
Vice Chair*



*Anil Mandala
Treasurer*



*Keith Konarska
Secretary*



*Cindy Anderson
Trustee*



*Mary Carole Cotter
Trustee*



*Nelson Jacobson
Trustee*



*Natalia Kovick
Trustee*



*David Swain
Trustee*



*Pat VerDuin
Trustee*



*Shirley Woodruff
Trustee*



Chad D. Bush

outgoing board member

We are grateful for Chad's years of service and we look forward to his continued leadership in our community.

the GHACF team

To learn more about our team,
visit ghacf.org/who-we-are/team.



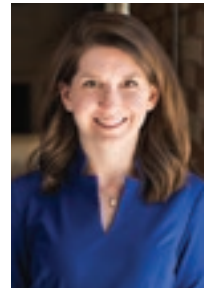
*Hadley Streng
President*



*Chris Riker
Vice President
of Advancement &
Donor Services*



*Patty MacDonald
Vice President
of Finance &
Administration*



*Holly Cole
Vice President of
Grants & Program*



*Kari Fuller
Director, Coopersville
Area Community
Foundation*



*Lauren Grevel
Senior Program
Officer*



*Elizabeth Huisman
Grants & Program
Associate*



*Adrienne Whisman
Philanthropic
Services Associate*



*Heather Delimata
Administrative
Specialist*



While this is a report on the 2020 calendar year, we would be remiss not to mention our 50th anniversary. If you would like to help the community foundation continue our good work TOGETHER, please consider a gift to the 50th Anniversary Greatest Needs Fund.



1 South Harbor Drive · Grand Haven, MI 49417
(616) 842-6378 · FAX (616) 842-9518
www.ghacf.org · info@ghacf.org

For good. For ever.SM

facebook: [GrandHavenAreaCommunityFoundation](https://www.facebook.com/GrandHavenAreaCommunityFoundation)
twitter: [@ghacf](https://twitter.com/ghacf) · instagram: [@grand_haven_found](https://www.instagram.com/grand_haven_found)



Grand Haven Area
community foundationSM

1 South Harbor Drive
Grand Haven, MI 49417

ghacf.org

imagine what we can do



Re-Confirmed in Compliance
with National Standards for
U.S. Community Foundations