

# **inspiring philanthropy**

Grand Haven Area Community Foundation | 2018

We're redefining  
philanthropy  
to include  
time, talent,  
treasure, and ties,  
because it's not about  
how much you give, but  
how deeply  
you care.

Each year, we continue to be amazed by the generosity of our community. We're so grateful for the trust placed in us and the confidence you have that we will positively impact our community.

2018 was an exciting year of change for the foundation. We began the year with a new outlook on how we affect change and how we think about ourselves as an organization. Transitioning from the word "nonprofit" to "for-impact" is more than just a buzzword—it means changing the way we think and, when necessary, having tough conversations throughout our region to determine where we can make a difference.

In the spring, we awarded almost half a million dollars in scholarships, and by year-end, we granted just over \$8 million to for-impact organizations. Among the grant highlights, we've continued efforts with Housing Next, we helped preserve over 219 acres of land in Ottawa Sands, and we joined others in the community to rebuild the Imagination Station

Within the walls at One South Harbor Drive, we welcomed our fifth president, refreshed our vision and mission, and approved a new strategic plan. We look forward to implementing this new plan, which is dedicated to inspiring greater philanthropy, proactively stewarding investments, and focusing our grantmaking to ensure positive community impact.

This is a continuation of the great work we've done for many years, and we will continue to lead with compassion and integrity.

We look forward to working together with our donors and collaborative partners to continue meeting the ever-changing needs of our community. The work we do is a result of being well supported by our community, and we thank you for that.

Sincerely,

*Hadley Streng* *Randy Hansen*

Hadley Streng  
President

Randy Hansen  
Chair, Board of Trustees





# Strategic Plan 2019-2021

## *Vision*

We advance the well-being of our communities by creating the very best places to live, learn, work, give, and engage.

## *Mission*

We enhance the quality of life for all by working together to collectively address challenges and opportunities throughout West Michigan.

## *What's our GIG?*



## *Our Guiding Values*

stewardship



exceptional & empowering service



integrity



entrepreneurial spirit



inclusion

## *Leadership Effectiveness*



## *What Success Looks Like*



***Our community is inspired to greater giving that advances our mission***



***Our endowment is stewarded to give yet also to grow***



***Our for-impact partners and donors are our catalysts for greater community understanding and change***

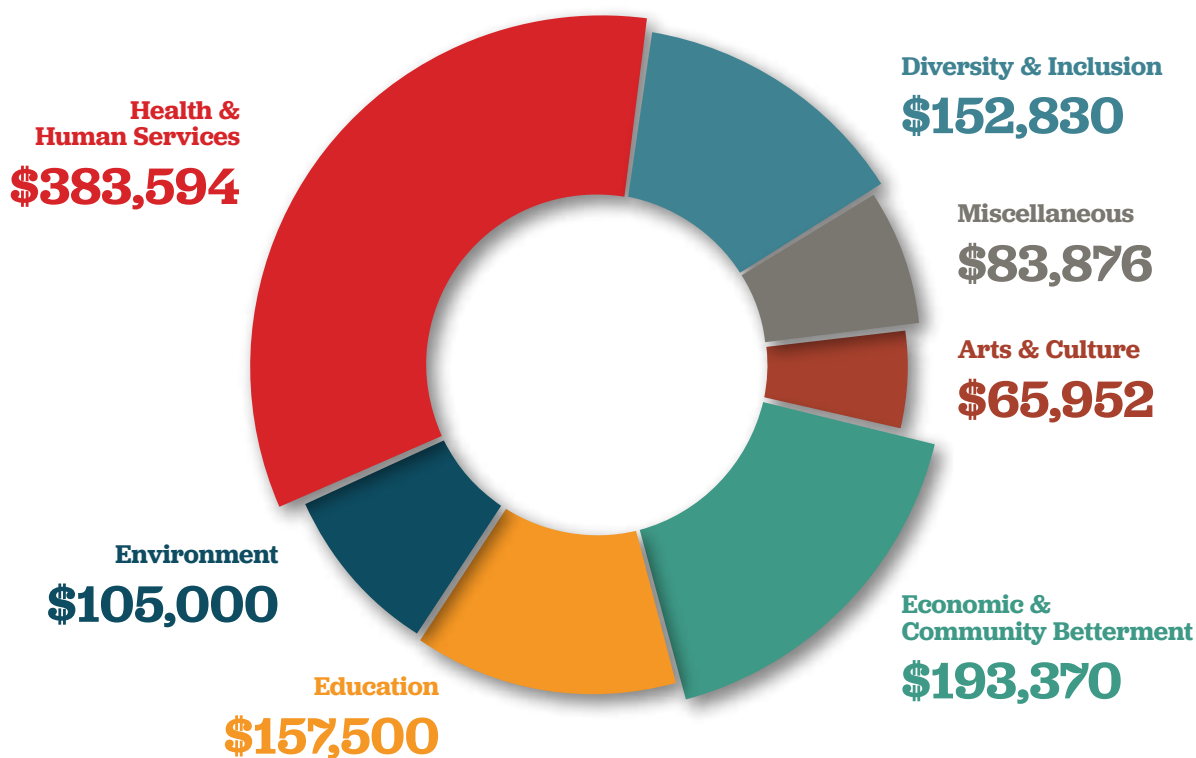
# where we give

**Total granted**  
from all GHACF funds = **\$8,775,063**

We are our community's charitable foundation and we're proud of our role as a community grantmaker. We're here to improve and enhance the quality of life by promoting healthy, inclusive, and diverse communities within West Michigan.

In 2018, a total of \$8,775,063 went back to our community from all funds, and of that, \$1,142,122 was awarded in grants from our Greatest Needs Funds, Field of Interest Funds, and the Youth Fund.

**Amount granted**  
through our responsive and  
impact-driven grantmaking = **\$1,142,122**



Turn the  
page to  
read six  
**grant**  
**impact**  
**stories**  
from the  
past year

## 2018-19 Grants Committee

Our grantmaking committee is made up of board members, as well as a representative from our Youth Advisory Council. Together they make the critical decisions to care for our community.

Anil Mandala, *Chair*  
Cindy Anderson

Sandy Huber  
Mark Kleist

Mark Pereira  
Ellen Stolarski, *YAC*

Pat VerDuin  
Randy Hansen, *Ex-Officio*



# bridging community perspectives



## diversity & inclusion

**Lakeshore Youth Leadership Connections** cultivate leadership skills in students from the Grand Haven and Muskegon areas. Participating students establish a strong foundation by gaining an understanding of their own leadership style and the style of fellow classmates. They solidify that foundation through a series of in-depth learning opportunities, which increases awareness of local issues that will have an impact on their future. It also helps them to understand the differences of both communities and to respect those differences.

"This program helped me to be more aware of the world around me and dramatically impacted my mindset about other people," said one Muskegon Middle School eighth grader. "We've realized how diverse yet similar our communities are—that GH middle and high school students are not so different from our students

in Muskegon. I have learned how I can connect with others and myself by digging deeper into my personality and seeing how I can make myself better."

"The future of our community is dependent on our young people," said Nancy Manglois, Director of Talent & Leadership Development at the Chamber of Commerce Grand Haven, Spring Lake, Ferrysburg. "This program helps students see beyond their sphere of influence and prepares them for the next step, whether that's college or a career. It also teaches them how to build and maintain relationships, and why they respond the way they do."

"This program has helped break down prejudice and bias between the two communities."

— Grand Haven High School 10th grade student



# supporting adult development

(l to r) Tutor Mary Marthey, student Awatif Mohamed, student Adam Mohamed, and tutor Jeff Parriot, along with the Mohamed's four children.

## health & human services

**R.E.A.D.** (Reading Enables Adult Development) is the only local, free, one-on-one tutoring program for adults seeking to improve their literacy skills. The program serves students 18 year or older who cannot read or read at an extremely low level. This service is provided for those whose native language is English, as well as those for whom English is a Second Language (ESL). Over 80% of the participants are ESL students. Tutors meet their students for a one-on-one tutoring session each week for 1-2 hours, and work on the specific literacy-related goals of their student.

The refugee/immigrant population is required to learn English as part of their resettlement agreement. ESL students benefit from one-on-one R.E.A.D. tutoring by working on specific goals, such as attaining employment or better employment, passing a driver's test, obtaining U.S. citizenship, and reading, writing, and speaking in English to assimilate into the community.

"This grant has given R.E.A.D. the chance to grow all of our resources for our one-on-one tutoring program," said Everett. "We've added new educational materials for our students, trained new tutors, and worked closely with our tutor/student pairs to ensure a good match."

The consequences of illiteracy are far reaching, affecting virtually every social problem we have as a community, state, and nation. R.E.A.D. exists to provide hope and access to tutoring services for adults in our community who have been overlooked, undervalued, and underserved. R.E.A.D. provides these adults a safe and positive environment to learn and reach their full potential. Tutors empower their students with skills to bring about changes they want to see in their lives.

"The ESL grant has enabled us to closely monitor our students' progress through their individual goals and test scores. Instead of solely focusing on how to fund the program, we've been able to develop and enhance it. We wouldn't have been able to do so without the grant!" — Hannah Everett, Executive Director, R.E.A.D. Ottawa



# enriching communities



## arts & culture

Access to the arts is a critical component of thriving communities, and increased access to arts and culture provides a positive outlet for artists and public engagement. Celebrating music in public parks provides an opportunity to foster positive community connections, while enjoying the natural setting in which events take place.

The **Tri-Cities Broadcast Foundation's Summer Concert Series** is free to the public and provides an opportunity for residents and visitors alike to broaden their musical exposure and support a wide variety of artists. The concert series provides musical exposure to young people, is accessible for families, and strengthens the sense of community on the east side of Grand Haven.

The series also provides an opportunity for internship students at 103.5 WAWL, providing them with vital business skills that correlate to a career in broadcasting.

WAWL's mission is to provide educational direction in the broadcasting field and foster new broadcasting careers for residents of West Michigan. The station creates an opportunity for social engagement and community connections through live musical performances, which ultimately strengthens communities by bringing people together, enriching lives, and drawing a deeper understanding and appreciation of diverse groups.

"The grant helped us, in part, provide live, local, free summer concerts every Tuesday evening from June 18th-August 6th at Bolt Park on the east end of Grand Haven. We appreciate everything that the GHACF does for our community and 103.5 WAWL."  
— Eric Kaelin, President, Tri-Cities Broadcasting Foundation (103.5 WAWL)





# being mindful in a hectic world

## education

Mindfulness is a mental state achieved by focusing one's awareness on the present moment and being aware of where we are and what we're doing, while calmly acknowledging and accepting one's feelings, thoughts, and bodily sensations. Mental health is a concern throughout Northwest Ottawa County, and mindfulness is something that has proven to be a great help with the stress and anxiety that is felt throughout our community.

**The Mindfulness Project** at Grand Haven Area Public Schools teaches mindfulness beginning at the fifth-grade level, which allows students to be in better control of their social and emotional selves. Mindfulness lessons at this age allow students to understand what happens when they start to feel stressed and how to respond to that—rather than just reacting.

"We believe that teaching mindfulness techniques to our students at these critical times will allow them to better understand themselves and what happens both neurologically—physically—as well as emotionally when they run into times of anxiousness or stress," said Augustyn. "These techniques give them the tools that they can use going forward in school as well as in life."

Techniques include taking a step back, giving yourself a moment to be aware, and then handling the situation. Teaching these techniques initially at 5th grade and then re-teaching at 7th grade allows students to be ready for increased expectations in academics, both socially and emotionally. Mindfulness teaches students how to build resilience to better handle the stressors of growing up, whether in school or at home.

"This grant gave us the opportunity to have people who really understand mindfulness come and teach the teachers and students, then train teachers to teach it moving forward. Best of all, our counselors and social workers already see daily differences in how students and teachers handle stressful situations." — *Kate Augustyn, Director of Special Education at GHAPS*

# helping each other grow



Doing More.  
Together.

Ottawa Area Schools



A Regional Partnership to Promote Public  
and Private Education in the Ottawa Area

## economic & community development

When the local economy does well, it affects all of us. The Ottawa Area Intermediate School District's **Doing More. Together.** is a collaboration of schools, businesses, and communities serving together to elevate our region. The program is designed to engage individuals, families, businesses, and communities by demonstrating that Ottawa area schools are committed to providing students with the resources and skills they need to be successful in the future.

The Doing More. Together. Partnership Program created a video series that highlights our region's successful programs and partnerships of Ottawa area schools in an effort to attract new families, commerce, and skilled workers to the region.

Our youth stand to benefit from increased educational support, more innovative types of programming, highly-qualified teachers, and increased community support with more wrap-around services that help develop the "whole child" and help families be successful. Another goal is to attract high-level talent for our schools. The more highly-qualified our educators are, the better education our youth will receive.

As the community learns how these programs positively impact students' lives, their willingness to support the schools—financially and otherwise—increases. With more community support, schools become stronger, and, in turn, benefit the local economy, igniting a continuous cycle of growth and investment.

"The generous grant award from the community foundation allowed us to produce video stories about the top-notch education programs that exist in our region and show how school, employer, and community agency partnerships enhance learning for our students. These stories help our residents understand what school is really like today, and are a great way to show families who are considering moving to our region why this is a desirable place to learn, work, and live." — Michelle Ready, Director of Communications, OAISD





# preserving our resources

## environment

When a 345-acre parcel of land along the Grand River became available, the Land Conservancy of West Michigan (LCWM) partnered with Ottawa County Parks (OCP) to purchase it for permanent protection as a public park. A grant from the GHACF to the LCWM helped with the purchase of the land, and in the summer of 2019, LCWM completed the transfer of **Ottawa Sands** to OCP. The park includes 219 acres of critical dunes that provide habitat for wildlife and migratory birds, an 80-acre lake, and over one mile of Grand River frontage.

"We're a big supporter of greenways, corridors of land along rivers and other waterways," said Jessica VanGinhoven, Communications Specialist at Ottawa County Parks. "This was a huge win for the Lake Michigan coastal greenway. We're so grateful that the community stepped up to provide additional support and save this land from development."

By turning the former sand mine into a park, LCWM and OCP helped preserve the shoreline dune habitat and its natural resources, created a new area for community activity in nature, and supported the local economy.

"The Ottawa Sands project opened to the public a beautiful parcel of natural land that would have otherwise remained private," said Orttenburger. "Now, visitors can explore the land and catch glimpses of a family of bald eagles, threatened Pitcher's thistle, and stunning dune and water views. Ottawa Sands significantly enhances the scenic appeal of the community and creates new opportunities for healthy outdoor recreation."

"We're lucky our community recognizes the value of our natural resources," said VanGinhoven. "It's why people move here and work here."

"Ottawa Sands is the 'missing puzzle piece' that creates a 2,000-acre corridor of public green space, stretching from P.J. Hoffmaster State Park all the way to the Grand River. Without protection, it would be lost to development or continued sand mining." — *Marie Orttenburger, Communications Specialist at the Land Conservancy of West Michigan.*



# long-term initiatives with

To create sustainable change, our long-term initiatives are cultivated to target the root causes of the social and economic challenges that our community faces. Northwest Ottawa County continues to benefit from the strategic and purposeful grants awarded throughout our history. Three such initiatives include Housing Next, the Michigan Health Endowment Fund, and TCAN.

## Housing Next

Housing Next has worked in close partnership with the City of Grand Haven, the Village of Spring Lake, and Grand Haven and Spring Lake Townships. Each of these communities has been engaged in the work of updating local planning and zoning standards in order to accommodate more housing at a greater diversity of price points.

### Define the Problem

In late 2018, Housing Next contracted a Housing Needs Assessment with the support of the Greater Ottawa County United Way, the Community Foundation of the Holland/Zeeland Area, and the GHACF. This report detailed the current availability and condition of housing supply across the county and provided a specific sub-set of data pertaining to Northwest Ottawa County.

We have confirmed that more housing is needed at all price points in NW Ottawa County, but have also learned that the greatest needs fall among market-rate rental housing and for-sale homes priced for the workforce (under \$250,000).

Most organizations define affordability as housing that costs no more than 30% of a household's gross income.

For those who own their home, the mortgage + taxes + insurance + maintenance + association fees should not equal more than 30% of a household's income. For those who rent the total annual rent + any fees for pets, parking, or similar costs should be 30% or less of a household's income.

We have a high number of people spending more than 30% on housing, in part because in Ottawa County, 50% of the population currently earns less than \$59,000 per year. The median list price for single family homes in NW Ottawa County is currently \$324,000 due to limited supply and significant demand.

### Create Policy Support

While it is critical that our work across NW Ottawa County will ultimately result in the creation of more housing, we recognize that before we make a concerted effort at building those units, we must first spend time working to improve the structural and regulatory environments that underlie the housing market. Too often, local standards that regulate minimum lot sizes, utility connection fees, or lengthy approval processes are pushing up the cost of housing for our workforce. Yet, many of these standards are in place for good reason. Housing Next has been working with local communities to

talk through the details of local zoning and permitting, and exploring opportunities to reduce regulatory barriers where new housing meets the standards of quality and affordability expected by the surrounding neighborhood.

Housing Next has provided an overview of the housing needs assessment data to 15 Ottawa County municipalities and discussed the regulatory barriers that are making it difficult to provide more supply at the needed price points. They have been directly involved in the processes to update and/

or rewrite some zoning standards in both Grand Haven and Grand Haven Township. Impressively, Grand Haven Township has created a first-in-the-state model for "Missing Middle" building typologies which would allow for single family, two-family and four-family dwelling units all within the same district, paired with basic design standards to ensure quality and longevity of those structures.

The City of Grand Haven has begun the process of evaluating every district within the city with consideration for where there may be opportunities to build a greater variety of housing product with a greater diversity of price range.



# a long-term impact

## MHEF: Pathways to Better Health

With support from the Michigan Health Endowment Fund (MHEF), the GHACF and the Community Foundation of the Holland/Zeeland Area re-granted a total of \$490,000 (\$330,000 from the MHEF and \$80,000 from each community foundation) over a three-year period (2016-18) to projects and programs designed to advance the priority areas noted in the 2015 Community Health Improvement Plan.

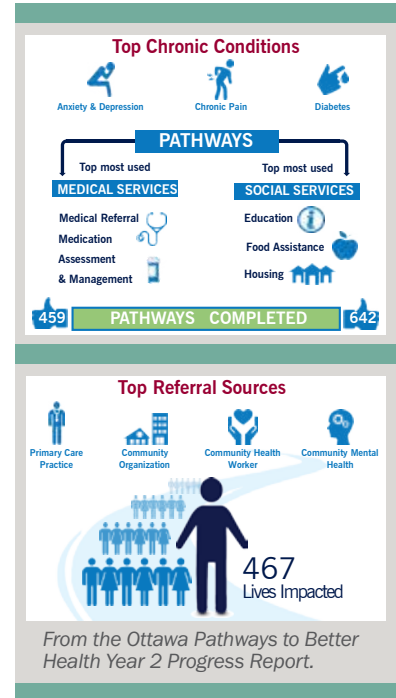
\$150,000 was awarded to the Ottawa County Department of Public Health to launch Ottawa County **Pathways to Better Health** (OPBH), an evidence-based community health worker model that has been proven to reduce health care costs while improving health outcomes for patients.

### The OPBH Community Health Workers:

- » Meet clients at their convenience in their homes or elsewhere
- » Help clients set goals
- » Guide clients through the health care system
- » Link clients to medical care based on their specific needs
- » Help clients manage their health conditions and prescriptions
- » Help clients reduce hospital and emergency room visits
- » Link clients to community services and resources

Pathways to Better Health fully kicked off in February 2017 as a three-year pilot program to assist adult Medicaid and Medicare beneficiaries who have two or more chronic diseases and also have health and social service needs. In the first two years of the program, eight community health workers have supported over 400 individuals as they navigated over 1100 medical and social services pathways.

As a result of Pathways to Better Health, clients report a statistically significant increase in their overall health, their confidence navigating the health care system, and decrease in the days impacted by poor physical health, and poor mental health.



## TCAN

In 2011, GHACF received a \$50,000 challenge grant from the Kresge Foundation to support the efforts of the newly formed Tri-Cities College Access Network (TCAN), a local college access network of Michigan College Access Networks. TCAN's overarching goal was to increase the number of Tri-Cities residents who have a post-secondary certificate and/or college degree.

Today, TCAN remains a collaborative organization with partnerships from the Chamber of Commerce Grand Haven, Spring Lake, Ferrysburg; City of Grand Haven; the GHACF; Grand Haven Area

Public Schools; Greater Ottawa County United Way; Ottawa Area Intermediate School District; Spring Lake Public Schools; and the Village of Spring Lake.

Recognizing that barriers exist that make it difficult for students, especially low-income and first-generation students, to successfully pursue post-secondary opportunities, TCAN provides a college advisor to our local high schools. The advisor provides guidance, insight, and support to students and families completing the Free Application for Federal Student Aid (FAFSA) and/or applying for the Tuition Incentive Program (TIP). Since TCAN's inception, over eight hundred students have been identified as eligible for TIP, which equates to two years, fully-paid tuition at community college, totaling over \$13 million dollars.

In addition to supporting our district's high school seniors, TCAN supports preschoolers as well. Throughout the duration of the academic year, TCAN creates, develops, and coordinates educational and professional development meetings for area preschool staff and administration. Undoubtedly, creating a culture of post-secondary success begins with our earliest learners.



I Have a Plan Day, GHHS

# ways to give

We understand that each donor has individual needs. We'll work with you to ensure your philanthropy is effective, personal, meaningful, and fulfilling. From simple to complex, we're able to facilitate the gift that makes the most sense for you.

- » Annuities
- » Appreciated Stock
- » Bequests
- » Cash
- » Charitable Gift Annuities
- » Charitable Lead Trusts
- » Charitable Remainder
- » Life Insurance
- » Real Estate
- » Retained Life Estates
- » Retirement Portfolios
- » Trusts

## Are you 70½ years or older?

You can make a gift from your IRA. Here's how it works.

- » You make a gift of up to \$100,000 by transferring IRA assets directly to the GHACF. You must be at least 70 1/2 years old. If married, each spouse can transfer up to \$100,000 from their IRA.
- » Your gift can create a charitable fund in your name, the name of your family, or in honor of any person or organization you choose. We'll handle the administrative details.
- » Your gift will be placed in an endowment that is invested and will grow over time. Grants addressing community needs will be made forever.

IRA transfers to these types of funds may be made tax-free: unrestricted, field of interest, designated, and scholarship.

**IRA transfers to advised funds are not tax free.**



## types of funds

The types of funds at the community foundation reflect the varied interests of our fund holders and donors. Whether they are advised, designated or unrestricted, new or longstanding, endowed or non-endowed, they are evidence of the spirit of generosity of individuals, families, corporations, and organizations seeking to make a positive impact in our community today, tomorrow, and forever.



### greatest needs funds

Enable the GHACF to remain proactive, responsive, and flexible to our community's most critical needs.

minimum to open

\$5,000

number of funds at the GHACF

37



### donor & corporate advised funds

Allow an individual, family, or company the ability to establish a charitable fund, then recommend grants while the foundation staff administers the grants.

\$5,000

194



### field of interest funds

Connect personal values to high-impact opportunities and allow individuals to target their gifts to address needs in a specific area.

\$5,000

41



### organizational funds

Provide for-impact (nonprofit) organizations income streams to support programs and operations.

\$5,000

208\*



### scholarship funds

Invest in the next generation with post-secondary education assistance and build a foundation for a brighter tomorrow.

\$25,000

126

\* FASB funds not included in total number of funds



# meeting changing community needs

Giving to our greatest needs fund, or establishing a named greatest needs fund, is a wonderful way to enable us to remain proactive, responsive, and flexible to our community's most critical needs. As we say, "forever is a really long time," and we remain committed to being an impactful funder forever.

40th Anniversary Greatest Needs Fund  
Thomas and Mary Kay Alguire Family Fund  
Allendale Greatest Needs Fund  
BR Fund  
Janet and Ruth Beukema Fund  
Janice Carducci Fund

## Andy & Joyce Cawthon Greatest Needs Fund

Coopersville Community Action Fund  
David and Carol DeBlaey Fund  
Howard Dykhouse Fund  
Dr. Edgar and Gretchen Garrison Family Fund  
Kent M. and Freida Hastings Family Fund  
Doris V. Johnson Fund  
F. Martin Johnson Greatest Needs Fund  
Ausma Lanka Fund  
Amy Lantz Memorial Fund

Lee Family Fund  
Paul and Minnie Luytjes Fund  
Garry L. and Jean Fisher Mesler Family Fund  
Grand Haven Area Greatest Needs Fund  
Dorothy Mixer Fund

Lynne Sherwood Fund  
Marion A. Sherwood Family Fund  
Marion A. and Ruth K. Sherwood  
Greatest Needs Fund  
Ann Tabor Greatest Needs Fund

## greatest needs funds

Henry Neitring Fund  
Judge Jacob and Betty Ponstein Fund  
Nancy Dornbos Rhem Fund  
Eugene "Gene" Rothi Community Fund  
Fred Riplo Family Fund  
B. P. Sherwood, Jr. Trust Fund  
Dr. Harold Sheridan Fund

Robert W. and Mary Ellen Thomas Family Fund  
James & Mary Teitsma Fund  
Kenneth and Audrey VanBeukering Fund  
Ward W. and Jean M. Verseput Fund  
Robert P. and Annette Fisher Whitney Fund

● indicates new fund  
Sept 2018-Aug 2019



### Art in the Park Fund

The Village of Spring Lake established a **community service fund** to support efforts to beautify public spaces and introduce art to our community.

The first two Art in the Park projects were murals along Lakeside Trail, a linear park that serves as a multi-user trail connecting Spring Lake with our neighboring communities. The next effort will be a sculpture commission to honor Gary and Victoria Verplank, former Village residents who contributed so much to our community.



### Andy & Joyce Cawthon Greatest Needs Fund

We opened a fund with the GHACF because the concept of a fund dedicated to local issues and needs matched our intentions. We are fortunate to have been successful in our careers and investments and want to help make our world, and specifically our community, a better place for all.

Placing these funds in a **greatest needs fund** with the community foundation allows our funds to be aggregated with others' to have the greatest impact on a pressing community need which may change from year to year. A win for everyone!



Independent Living for Those Who Inspire

### Gracious Grounds Endowment Fund

Gracious Grounds is a faith-based organization that provides housing opportunities to people with unique abilities. As an organization, they look beyond limitations to create an environment that is affordable, friendly, and resident-centered.

"We opened our **organizational fund** so people could give to our endowment easily," said Sandy Baker, Executive Director of Gracious Grounds. "We appreciate the investment opportunity that the foundation affords. This endowment fund will sustain our organization for a long time."

# a personal approach to giving

Donor and corporate advised funds allow an individual, family, or company to establish a charitable fund with a single gift. Donors may add to the fund with additional gifts at any time and may remain anonymous, if desired. Donors enjoy administrative convenience, cost savings, and tax advantages, and gain access to the expertise of the community foundation's staff. Once the fund is established, donors recommend grants and the foundation's staff does all the work of administering the grants.

@HomeRealty Foundation  
Abbit Management Corp Fund  
C. Bennet Ainsworth Fund  
Alt, Jonas, and Mercurio Family Fund  
Amberger Family Fund  
Cynthia and Donald Anderson Fund

CAPS Science Program  
Carolyn Boersma Fund  
Boezaart Family Fund  
David C. and Gail L. Bos Family Fund  
Mackenzie Boyd Fund  
Barbara Boyer Fund

Chris-Tina Fund  
John and JoAnne Clickner Family Fund  
Bob Constant Athletic Memorial Fund  
Mike Cook Fund for Fun in Education  
Coopersville Rotary Club Fund  
Coopersville Rotary Club Community Action Fund  
Ryan & Karen Cotton Fund  
Matilda and Harold Crane Donor Advised Fund  
Kennard and Wendy Creason Family Fund  
William and Mary Creason Fund  
Alex Crum Memorial Sports Fund  
Scott E. DeBoer Memorial Fund  
Howard and Louise Dekker Family Fund  
Dale and Elizabeth Deppe Family Fund  
Jeremy and Daniela Deppe Family Fund  
Detter/Walcott Early Childhood Education Fund  
Keith and Mary DeWitt Family Fund  
Mark and Denise DeWys Family Fund  
Ralph and Arleene DeYoung Fund  
The Diva Fund  
The Dornbush Family Fund  
**James A. Doss Family Fund**  
N. Kay Doss Memorial Fund  
Howard and Wilma Draft Family Fund  
Eagin Family Fund

## donor advised funds

Len and Wanda Anderson Family Fund  
Baas Family Fund  
George M. Bailey Fund  
Douglas and Katharine Baker Family Fund  
Pearl Bandstra Fund  
Ray and Sue Barrett Garden Fund  
Paul C. and Carol C. Bedient Family Fund  
Betten Preferred Auto Group Fund  
Betten Baker Fund  
BizStream Community Fund  
Boer Family Fund  
Dr. Fredrick B. Brown Fund  
John G. and Claire E. Bryson Family Music Fund  
Robert & Virginia Burnside Family Fund

Scott and Jennifer Breen Family Foundation  
Richard and Patricia Briegel Family Fund  
Budd and Melinda Brink Family Fund  
Fred C. Bruhn Donor Advised Fund  
Brusveen Chiropractic Center Charitable Fund  
Edward F. and Phyllis A. Bushouse Fund  
Dan Bylsma Charitable Fund  
Robert L. Bytwerk Family Fund  
Kevin Carbary-Carol Alexander Fund  
The Coopersville Robert J. and Betty L. Casemier Family Fund  
The Grand Haven Robert J. and Betty L. Casemier Family Fund  
Denny and Grace Cherette Family Fund



### Kyle and Samantha Verplank Family Fund

Kyle and Samantha have been actively engaged in and supportive of our community for many years.

With the establishment of their **donor advised fund**, Kyle and Samantha have an organized and tax-friendly way to contribute and recommend charitable gifts to the organizations and projects they care about.



### Dr. Alan D. Steinman Donor Advised Fund for the Environment

Alan Steinman was raised by his parents and faith to give back to the community. He chose to open a **donor advised fund** with the GHACF because he wants to help preserve and enhance the environmental assets of the region where he lives. He has a similar fund at the Community Foundation for Muskegon County (CFMC) and is hopeful that by leveraging these two funds, there can be greater coordination and cooperation between GHACF and CFMC around issues that transcend jurisdictional boundaries.



### Anthony & Monica Verplank Thriving Communities Fund

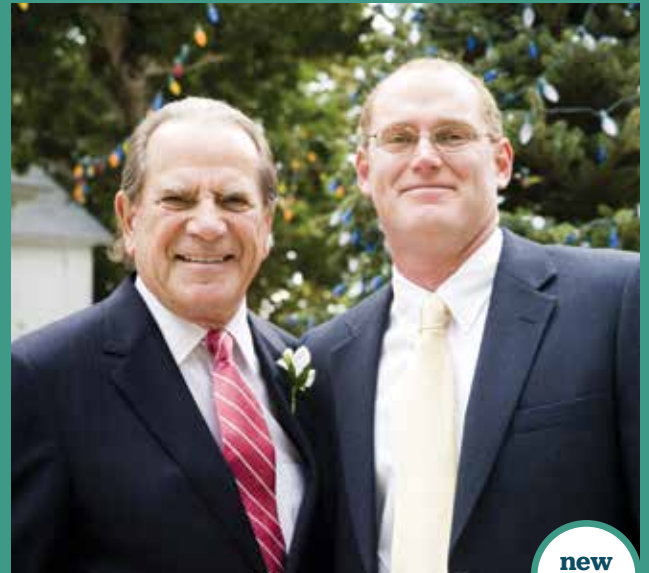
Tony and Monica opened this **donor advised fund** to support organizations creating opportunities for others to thrive. Not just manage, but truly thrive.

Their dedication to assisting community organizations who help lift up and empower those in need was the inspiration for this fund.

Martha A. Erickson Fund  
 B. John and Jennifer Essex Family Fund  
 William J. Fettis & Dawn M. Dupont Family Fund  
 FISH Fund  
 Louis P. and Sharon F. Fracalossi Family Fund  
 Fleming and LaTorre Family Fund  
 Gage Family Fund  
 Gahsman Family Memorial Fund  
 Grandma Glo, TJ, Skylee & Cody Family Fund  
 Valerie Guttowsky and Craig Councilor Fund  
 Edward J. and Nancy D. Hanenburg Family Fund  
 Nancy Hanenburg Fund  
 Kenneth D. and Janet A. Harestad Family Fund  
 James and Catherine Haveman Family Foundation  
 Douglas and Sharlene Hekman Family Fund  
 Holtrop-Tubbergen-Holtrop Family Fund  
 Julia Houle Advised Fund  
 James and Debra Hovinga Family Fund  
 Sandy Huber Fund  
 Richard G. & Patricia R. Huff Children's Support Fund  
 Mike and Jane Hutchins Family Fund  
 George A. and Sherry A. Jackoboice Family Fund  
 James and Sally Jacobs Fund  
 Alvin E. and Mary C. Jacobson Fund  
 David and Nancy Bird Jacobson Family Fund  
 Nelson C. and Lana Jacobson Fund  
 Grand Haven Area Jaycees  
 Grand Haven Rotary Fund  
 Ted V. John Charitable Fund  
 F. Martin and Dorothy A. Johnson Family Fund  
 Holly & Erick Johnson Family Fund  
 Paul A. and Charlotte A. Johnson Family Fund  
 Johnson Rechner Family Fund  
 JSJ Foundation Fund  
 Todd and Amy Kamps Family Fund  
 Brian and Nancy Kamstra Fund  
 Kar Family Fund  
 Keeton Family Fund  
 Mikel Allen Kelley Memorial Fund  
 Sanford and Kristine Kelley Family Fund  
 Phil and Jane King Family Fund  
 David J. and Sandra J. Klaassen Fund  
 Komray Family Fund  
 Jim and Candy Kraker Family Fund  
 Stella Kruizenga Fund for Women  
 Lahey Family Fund  
 Robert and Karen Lemmen Family Fund  
 Hung and Elsie Liang Fund for Music  
**Light Corp. Foundation Fund**  
 Faith Marie Losee Fund  
 The Loutit Foundation  
 Anil K. & Shanthi R. Mandala Fund  
 Mandy's Promise Fund  
 Debra and Robert Mann Family Fund  
 McKeough Family Fund  
 Larry and Anne McLaughlin Fund  
 Nate and Kristin Meldrim Family Fund  
 Robert Jacobson and Donnell Snite Mersereau Fund  
 Kyle Moreland Memorial Fund  
 Phyllis and Darell Moreland Family Fund  
 Peter and Sheila Murdoch  
 Donor Advised Fund  
 North Ottawa Wellness Foundation  
 William F. O'Connor Foundation/Joanne Unkovskoy, Trustee Fund  
 Bonnie Olson Memorial Fund  
 Ted and Vicki Parker Family Fund  
 Richard O. and Elizabeth A. Peel Family Fund  
 Sherrian A. and Thomas C. Pegg Family Fund

#### **Pliant Plastics Foundation Fund**

Larry Poel Fund  
 Craig and Coreen Porter Family Fund  
 Ted and Shirley Poulton Family Fund  
 Quigg Family Advised Fund  
 Robert H. and Andrea G. Rander Fund  
 RDH Fund  
 Scott & Julie Reenders Family Fund  
 Evan and Lois Reinders Fund  
 Milt and Judy Reeths Fund  
 Thomas and Gretchen Reinsma Family Fund  
 Remembrance Church Annual Fund  
 Gerald and Starr Retzlaff Family Fund  
 Thomas and Gail Ringelberg Family Fund  
 Dr. M. Gary and Pennie L. Robertson Family Fund  
 Garrod S. Post & Robert A. Hill Fund  
 Norah Lane Roelofs Memorial Fund  
 Rotary Club of Allendale  
 Lloyd S. and Marlene Rotz Family Fund  
 Sylvia and Ron Ruscett Family Fund  
 John and Marie Rycenga Family Fund  
 Jonas Saunders Family Fund  
 James C. and Rosena A. Sawyer Fund  
 Shape Corporation Fund  
 Dan and Carol Sedlock Family Fund  
 Dave and Dottie Seibold Fund  
 Barbara and Miller Sherwood Family Fund  
 Marilyn W. and B. P. Sherwood III Family Fund  
 Linda Shores and Michael Snodgrass Fund  
 Sietsma Family Fund  
 Donald and Dorothy Sikkema Fund  
 Slagel Family Fund  
 Paul K. and Marlene A. Spoelman Family Fund  
 Spring Lake Rotary Endowment Fund  
 Spring Meadow Fund  
 R. Neal Stanton and Grace F. Stanton Fund  
 Steffel Family Fund  
**Dr. Alan D. Steinman Donor Advised Fund for the Environment**  
 Dee and David Stokes Family Fund  
 Steven K. & Elizabeth M. Swanson Directed Fund  
 Dan and Ann Tabor Fund  
 Kenneth D. and Mary L. Terpstra Family Fund  
 Theune Family Fund  
 Tri-Cities Kiwanis Club  
 John and Elaine Vander Kooi Family Fund  
 Roger and Lois Vander Meulen Family Fund  
 Verplank Donor Advised Fund  
**Anthony and Monica Verplank Thriving Communities Fund**  
 Gary and Victoria Verplank Fund for Spring Lake Water Quality  
**Kyle and Samantha Verplank Family Fund**  
 Victoria Verplank Fund for Spring Lake Village Trees  
**Waanders Family Fund**  
 Thomas A. and Caryle R. Wagasky Fund  
 Robert and Deborah Wagenmaker Family Fund  
 David H. and Patricia H. Walborn Fund  
 Wallinga Family Fresh Start Fund  
 Robert and Jillayne Warners Family Fund  
 Weber Family Fund  
 West Michigan Nursery and Landscape Assoc. Horticultural Education Fund  
 Whiting-Bolthouse Family Advised Fund  
 Ruth Wierenga Ghana Fund  
 Nancy and Warren Wildeman Fund  
 James & Diana Wright Fund  
 James and Louise Zevalkink Fund



## **James A. Doss Family Fund**

A successful businessman and generous philanthropist, Jim opened this **donor advised fund** for two primary reasons.

First, he established this local fund to help assist him and his family to efficiently and effectively give to worthy charitable causes and organizations.

Second, he wanted to continue modeling philanthropy and fostering family conversations about giving back and positively impacting lives in our region.

---

The Grand Haven Area Community Foundation is honored to help individuals, families, organizations, and corporations achieve their philanthropic goals and continue to positively impact our regional community.

---





## Lifting Our Partners

» We're proud to support our local for-impact sector through strategic partnerships with regional capacity builders, such as the Lakeshore Nonprofit Alliance and Grand Valley State University's Johnson Center for Philanthropy. Organizations such as these create a stronger foundation for self-sufficiency and effectiveness.



## Technical Assistance Grant Program

This grant program is designed to assist for-impact agencies in their efforts to build their organization's internal capacity and effectiveness in regard to management, governance, and delivery of service.

- » Applications are reviewed on a rolling basis, typically within 2-4 weeks of submission
- » Grant totals usually range from \$500-10,000
- » These grants are not held to our competitive grant cycle



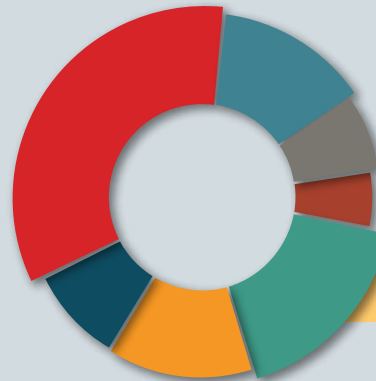
## By the Numbers

- » Ranked **#49** in the nation for **gifts per capita** (2018 Columbus Survey).
- » Ranked **#8** in the state of Michigan for **total assets** (2018 CMF Databook).



## A Proven History

- » Our community's endowment has grown from almost \$65 million in 2012 to more than \$118 million in total assets.
- » Our funds have granted over \$28 million over the last five years.
- » Our charitable portfolio has a 5.4% five-year investment return. While the return for 2018 ended at -6.03% due to a downturn of the market in the fourth quarter, by the first quarter of 2019, we recouped those losses—and then some.



**Total granted** th



**Health & Human Services**  
**\$383,594**



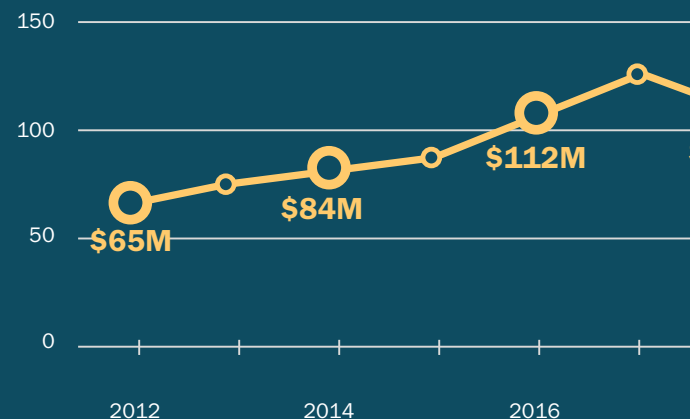
**Environment**  
**\$105,000**



**Economic & Community Betterment**  
**\$193,37**

Misc

## GHACF Assets Under Manage



**Y = 2018** **Y = 2019**

**358**  
applications received



**360**  
applications received



**187**  
students received a scholarship



**235**  
students received a scholarship

# at a glance

1,142,122

through our responsive and impact-driven grantmaking



Education

\$157,500



Diversity & Inclusion

\$152,830



Arts & Culture

\$65,952

miscellaneous \$83,876

That includes  
**\$87,867**  
granted by the  
Youth Advisory Council

That's  
**13**  
grants



awarded by  
**20**  
youth  
philanthropists



ement



**\$118,081,690**

Net Assets as of December 31, 2018

\$118M



**\$5,163,985**

Gifts In to all GHACF funds



**678**

Total Funds



**\$8,775,063**

Grants Out from all GHACF funds



**1,264**

Grants Awarded

**495,000** awarded in scholarships



**\$545,000** awarded in scholarships

**\$2,200** average award package



**\$2,140** average award package

Our scholarships made  
quite an impact as well



## A life of philanthropy

### Gary Verplank

(1940-2019)

The fourth generation of his family to live and work in Northwest Ottawa County, Gary graduated from Grand Haven High School before attending the University of Michigan.

His professional accomplishments stretched far and wide, but his local impact was significant and made possible in part by his involvement with numerous businesses including Shape Corp., Finish Corp., Light Corp., Track Corp., BR Metals, Pliant Plastics Corporation, BioSolutions, NetShape, and Magnode. Gary firmly believed that business exists for the betterment of community.

Gary never missed an opportunity to give back to the community that he loved. He was involved in many charitable, volunteer, and philanthropic organizations, including serving on the Board of Trustees for the Grand Haven Area Community Foundation from 1986-1992.

It's been said by many that our community would look very different today if it weren't for the active involvement and generous support of Gary and Victoria Verplank.

Gary will forever be missed, but we are incredibly grateful for the impact that he made.



# building a legacy

Recently, both Light Corp. and Pliant Plastics moved assets to **corporate advised funds** here at the foundation.



## spotlight: corporate advised funds

Light Corp., a world-class specialty lighting designer and manufacturer, is a progressive organization providing cost-effective lighting that improves productivity, health, and energy-efficiency in modern-day workspaces. Light Corp. products are designed, manufactured, and assembled in Grand Haven, Michigan.

Pliant Plastics Corporation has been custom injection molding engineering-grade thermoplastic resins for over 50 years. Founded in 1967, Pliant Plastics serves several commercial segments including automotive, furniture, medical, recreation, and packaging.

While these companies will continue to have the flexibility to grant dollars when and where they wish, the GHACF will take care of the administrative and investment responsibilities for each of them. We are honored to hold these funds and grateful for partnerships like these that allow us to play a small role in helping area corporations simplify their community giving programs.

L / G H T C O R P





# connecting personal values to high-impact opportunities

Field of interest funds connect personal values to high-impact opportunities and allow you to target your gift to address needs in a specific area.

Edith Mae and William Alt Family Fund  
Richard E. and Eleanor Carlson Babcock Memorial Fund  
Emilie Baker Fund for the Environment  
William T. and Shirley A. Baker Family Fund  
College Access Endowed Fund  
Dr. Elizabeth Curtis Dental Fund for Children in Need  
Elmer “Lou” Dense Fund  
Elizabeth Davison Kammeraad Dobbie Fund for History  
Alyce R. Erickson Fund (Fund for Excellence in Education)  
Farmland Preservation Fund  
Fluor Schwartz Memorial Fund  
Grand Haven Area Community Foundation  
Arts and Culture Fund  
Environment Fund  
Family and Children Fund  
Technical Assistance Fund  
Grand Haven Area Youth Fund (YAC)  
Gene and Sally Harbeck Fund

Healthy Seniors Healthy Youth Funds  
Jervosek Family Fund  
Friends of Kandu  
L.E.T. Fund (Love, Enjoy, Teach Fund)  
Craig Looman Fund  
Fletcher Meekhof Food Fund

Mary Ann Sherwood Families and Children Field of Interest Fund  
Tree Replacement Fund  
Tri-Cities Chautauqua Fund  
Tuesday Musicale Fund  
United Way Fund for Human Services  
Wayne VanAgthmael Health Fund

## field of interest funds

Michigan Health Endowment “Healthy Ottawa” Regranting Initiative Fund  
William H. Young and Dorothy Young Mixer Fund  
Marie and Lloyd O’Neal Fund for Music  
North Bank Communities Fund  
North Ottawa Area Community Coalition Fund  
Reichardt Family Endowment  
Helene D. and Bernath P. Sherwood, Jr. Fund

Mary Vivian Fund for the Arts  
Cornelia B. Wagner and Ruth B. Hoek Fund  
Margaret Lynn Wilson Fund  
Youth Fund of the Coopersville Area Community Foundation (CAYAC)  
Zenko Family Fund



### Waanders Family Fund

*John Waanders, along with his children, established the Waanders Family Fund after the passing of his wife, Judith Nell Waanders. Judy was a beloved daughter, sister, friend, spouse, parent, grandparent, great-grandparent, and career educator. Many also knew her through The Bookman, the bookstore on Washington Avenue in Centertown, Grand Haven.*

*This new **donor advised fund** is a beautiful tribute to Judith and will enable the Waanders family to support local causes of personal interest.*



### St. John's Episcopal Church Altar Guild Fund

*The parish of St. John's Episcopal Church was founded in 1866, one year after the conclusion of the American Civil War. The St. John's Episcopal Church Altar Guild Fund is an endowed **organizational fund** that was established to specifically support the Altar Guild at the church located in Grand Haven.*

# helping organizations thrive

Organizational funds provide income streams to support programs and operations at for-impact organizations. The foundation holds and invests the assets, providing responsible and professional fund management. Organizational funds can be a simple and effective way to create long-term financial sustainability.

ABC Coalition Fund  
Allendale Charter Township Parks and Recreation Fund  
Allendale Christian School Endowment Fund  
Allendale Lifelong Learners Fund  
Allendale Historical Society Endowment Fund  
Allendale Public School Foundation  
Allendale Township Library Endowment Fund

Coast Guard Festival  
Fireworks Forever Fund  
Fireworks Fund  
College Access Fund  
Thomas N. Cooper Designated Fund  
Coopersville Area District Library  
Friends of the Coopersville Library Fund  
Robert and Judy VanDongen Fund  
Westrate Children's Library Endowment Fund

Russell H. and Beatrice A. Dornbos Fund  
Mark and Lauri Douglas Community Arts Fund  
**Dykstra Family Music Fund**  
Eastern Ottawa County Silent Observer  
Family LIFE Center of West Michigan  
First Christian Reformed Church of Grand Haven Funds  
First Presbyterian Church of Grand Haven  
Alpha Fund  
Karin Fowler Pastoral Care Training Fund  
Omega Fund

Scott Fredricks Fund  
E. Selina Gerig and John J. Gerig Fund  
Girl Scouts of Michigan Trails Endowment Fund

## Gracious Grounds Endowment Fund

Grand Haven Area Public Schools  
Patrick Byrne Memorial Fund  
High School Choir Endowment Fund  
Ronny Kemink Pay to Play Fund  
Science Olympiad Programs Fund  
Jan Rempinski Memorial Scholarship Fund  
Eugene "Gene" Roth Memorial Athletic Endowment Fund  
Mental Health Fund

Grand Haven Christian School  
Tuition Assistance Fund  
Endowed Technology Fund  
Richard and Rosemary Geertsma Fund

Grand Haven Rotary STRIVE Designated Endowment Fund

Grand Haven Schools Foundation Endowment Fund

## organizational funds

American Red Cross  
Doris Ewing Red Cross Disaster Relief Fund  
Founding Fund  
Ottawa County Fund  
Janet C. Beukema Fund for Hospice  
Boomgaard Fund for Seniors  
Martin-Beverley-Todd Bomers  
Fitness & Aquatic Center Fund  
Martin-Beverley-Todd Bomers Memorial Band Fund  
Borculo Christian School Education Foundation  
Camp Bluebird  
Cynthia Collinge-Golab Volunteer Support Fund  
Endowment Fund  
Rosemary Konopa Cancer Retreat Program Fund

Camp Sunshine Endowed Fund  
Central Park Players Fund  
Chester Township Recreation Fund  
Children's Advocacy Center Endowment Fund  
C3 West Michigan's Inclusive Spiritual Connection Designated Fund  
Endowment Fund  
Memorial Endowment Fund

Chris Christiansen Youth Scholarship Fund  
Christian Haven Home Fund

## Church of the Saviour Fund

City of Coopersville  
Coopersville Area Historical Society Funds  
Coopersville Roundabout Beautification Fund  
Michael's Gift  
Recreation Fund

City of Grand Haven  
4th of July Fireworks Fund  
7th Street Coast Guard Boat Fund  
Boardwalk Maintenance Fund  
Boardwalk 25th Anniversary Fund  
Catwalk Maintenance Fund  
Central Park Fountain Endowment Fund  
Coal Tipple Restoration Fund  
Duncan Park Fund  
Grand Haven Lighthouse Endowed Fund  
Grand Haven Lighthouse Community Service Fund

## Grand Haven Public Safety Beach Safety Fund

Grand Haven Waterfront Stadium Fund  
Imagination Station Maintenance Fund  
Imagination Station "Reimagine Project" Fund  
Memorial Airport Fund  
Musical Fountain Fund  
Pier Safety Fund  
Public Artifact Fund  
Save the Catwalk Fund  
Splash Pad Fund

Coopersville Area Public Schools  
Athletic Fund  
Education Fund  
Performing Arts Center Designated Fund  
Coopersville Cares  
Capital Campaign Fund  
Endowment Fund  
Coopersville Farm Museum  
Coopersville FFA Education and Leadership Fund  
Coopersville Old Kids Fund  
Coopersville Memorial Fund  
Doug Corradini Spirit of #40 Fund  
Covenant Life Church Endowed Fund  
Crockery Township Fire Department Endowment Fund  
Alex Crum Memorial Fund



## Dykstra Family Music Fund

Jim and Marla Dykstra value the importance of music education, and that inspired them to open an endowed **designated fund** with a portion of their IRA's required minimum distribution. This fund will help advance music education for students at Grand Haven Area Public Schools by purchasing or providing assistance with musical instruments for children, course-related materials, and professional development opportunities for music teachers. With this fund, as well as a planned bequest, their ability to support and advance musical education will last forever.



## Church of the Savior Fund

This non-endowed **organizational fund** was created to support the general operations and mission-related activities of the Church of the Saviour R.C.A located in Coopersville, MI. The donations were given by generous members of the church.

In addition to providing current and future donors with another avenue to direct contributions, this new fund may also be used by individuals and the church to receive future memorial contributions.

Grand Haven Class of 1953 Fund  
 Greater Ottawa County United Way  
 Homelessness Prevention  
 Endowment Fund  
 Volunteer Center Funds  
 Norma V. Green Memorial Art Award Fund  
 Carol and Winfield Hall Fund for Music  
 Harbor Humane Society Funds  
 Coral and Peter Hanenburg Memorial Fund  
 Chuck and Olga Hennesen Fund  
 Olga A. and Charles J. Hennesen Family Fund  
 Hill Family Children's Christian Education Fund  
 Housing Next Fund  
 Hugs and Kisses Fund  
 Edward and Florence Huizenga Fund  
 International Aid Endowment Fund  
 Kitchel-Lindquist-Hartger Dunes  
 Endowment Fund  
 Kitchel-Lindquist-Hartger Dunes Fund  
 Jocki Klischan Fund  
 Lakeshore Baptist Church Fund  
 Lakeshore Ethnic Diversity Alliance Fund  
 Keith & Bernice Lamkin Fund  
 Lamont Christian School Foundation Fund  
 Land Conservancy of West Michigan Fund  
 Casey Lemieux Fund  
 Norm and Meg Lemieux Designated Fund  
 The Robert & Karen Lemmen Children's Fund  
 Love J. P. Fund  
 Kenneth Ranta Fund for The Little Red House  
 Loutit District Library Endowment Fund  
 Love in Action Fund  
 Paul & Minnie Luytjes Fund for Second  
 Reformed Church  
 Michigan Aviation Education Foundation/  
 Fontana Fund  
 Michigan Aviation Education Fund  
 Mosaic Counseling (formerly TCM Counseling)  
 Mary Ann Sherwood Fund  
 Fund for Children & Their Families  
 Muskegon Museum of Art Endowment Fund  
 NEO Forum Fund  
 North Ottawa Amateur Radio Club  
 North Ottawa Community Hospital  
 Mary's Wish Hospice Fund  
 Dr. Larry Poel Sports Medicine Fund  
 Community Health Systems  
 Samuel L. Westerman Sunshine Fund  
 North Ottawa County Council on Aging Funds  
 O'Neill Family Fund  
 Ottagan Addictions Recovery (OAR)  
 Endowment Fund  
 Ottawa Area Intermediate School District  
 Challenge of Children Fund  
 Roerink Visual and Hearing  
 Impaired Fund  
 Special Education Fund  
 Ottawa County Health Department  
 Miles of Smiles Fund  
 Ottawa County Parks  
 Foundation Endowment  
 Grand River Ravines Fund  
 Nature Education Center  
 Endowment Fund  
**Ray and Alma Statema Park  
 Stewardship Fund**  
 Spoonville Trail Fund  
 George and Nadaire Pardee Fund  
 People Center Endowment Fund  
 Clarence and Bernice Piersma  
 Endowment Fund  
 Vernon Poest and Roberta Gnerich Poest Fund  
 R.E.A.D Endowment Fund  
 Reel Perspectives Fund  
 Remembrance Church Endowment Fund

Resilience Fund (formerly Center for  
 Women in Transition Fund)  
 Gail Ringelberg Special Needs Fund for  
 North Ottawa County Council on Aging  
 Ellna Rotman Camp Fund  
 Lloyd and Marlene Rotz Designated Fund  
 Cindy Schember "I Love to Read"  
 Endowment Fund  
 Senior Resources of West Michigan  
 Endowed Fund  
 Sheridan Park Fund  
 Lynne Sherwood Fund for Greater Ottawa  
 County United Way  
 Roy L. and Karen L. Shields, Jr. St. John's  
 Lutheran Church Endowment Fund  
 South Evergreen School Fund  
 Ski Bowl  
 Endowment Fund  
 Immediate Needs Fund  
 SLJGA Fund  
 Robert and Janice Sluka Fund  
 Spread the Music Foundation Fund  
 Spring Lake Christian Reformed Church  
 Mission Endowment Fund  
 Spring Lake District Library  
 Endowment Fund  
 Restricted Endowment Fund  
 Outdoor Beautification Fund  
 Spring Lake Junior Sailing Association  
 Endowed Fund  
 Immediate Needs Fund  
 Spring Lake Presbyterian Church  
 Memorial Fund  
 Spring Lake Public Schools Needham  
 Teacher Grant Fund  
 Spring Lake Schools Foundation Fund  
 Carol Martin Fund for Spring Lake  
 Schools Foundation  
 Spring Lake Tennis Building Fund  
 Spring Lake Township Parks and  
 Recreation Fund  
**St. John's Episcopal Church Altar Guild Fund**  
 Harlind Throop Memorial Christmas Fund  
 Tri-Cities Area Habitat for Humanity  
 Endowment Fund  
 Tri-Cities Family YMCA  
 Endowment Fund  
 Pete Hill Fund for Y Kids  
 Tri-Cities Historical Museum  
 Drake-Middlemist Heritage Fund  
 Historical Society Fund  
 Non-Endowed Fund  
 Tri-Cities Soup for All/Homelessness  
 Prevention Fund  
 Tri-Cities Strikers Soccer Club  
 Endowment Fund  
 Donald and Elaine Twiss Fund  
 Bill and Nanci Tysman Designated Fund  
 United Methodist Church of Coopersville  
 Memorial Fund  
 Mary "Meime" vandenBerg Fund  
 Veteran's Memorial Fund  
 Village of Spring Lake  
**Art in the Park Fund**  
 Central Park Improvement Fund  
 Summer Concert Series  
 Endowment Fund  
 Walden Green Montessori Endowment Fund  
 David A. West Spirit of the Band Award Fund  
 West Michigan Academy of Arts & Academics  
 West Michigan Agricultural Education  
 Center Fund  
 Wetland Watch Environmental  
 Education Fund  
 Donald and Monica Zahm Memorial Fund  
 Jean H. Zukowski Designated Fund



## Grand Haven Public Safety Beach Safety Fund

In the last two years alone, hundreds of people have tragically drowned in the Great Lakes. After the drownings that occurred in 2018 by the Grand Haven lakeshore, individuals and organizations came together determined to try to minimize the number of future fatalities. The Rotary Club of Grand Haven, City of Grand Haven, Grand Haven Department of Public Safety, and State of Michigan partnered to raise the necessary capital and to develop and implement new safety tools on the Grand Haven Beach.

Among the additions made to the beach are numbered signs to help direct first responders, colored water-condition flags, additional rope for life rings, and a beach information broadcasting system.

---

If you'd like to make a donation to the Grand Haven Public Safety Beach Safety Fund, or any of our other funds, visit our website at [ghacf.org/donate](http://ghacf.org/donate) or send a check to our office at 1 South Harbor Drive.

---



# securing the future for our youth

Scholarship funds make educational dreams come true. When you invest in the next generation with post-secondary education assistance through scholarships, you're building a foundation for a brighter tomorrow.

Allendale Chamber of Commerce Scholarship Award  
Allendale Community Foundation Scholarship  
Jack Feldt Ambucs Memorial Scholarship Fund  
**Athena Scholarship Fund**  
Bailey Scholarship Fund  
Lindsey Bakale Memorial Scholarship Fund  
Ray & Sue Barrett Scholarship Fund

Jack & Libby Bush Scholarship Fund  
Ronald C. Bush Memorial Scholarship Fund  
David & Mary Jo Busman Family Scholarship Fund  
Careerline Tech Center Paraprofessional Scholarship Fund  
Coopersville Scholarship Fund  
Staci Cheadle Memorial Scholarship Fund  
Geri Coccodrilli Culinary Scholarship Fund

Erickson Education Fund  
Kevin Ernst Memorial Scholarship Fund  
Wallace K. & Jane Ewing Scholarship Fund  
Bertha M. Fase Memorial Scholarship Fund  
Scott A. Flahive Memorial Scholarship Fund  
Floto-Peel Family Fund  
Kenneth & Janis Formsma ESL Scholarship  
John L. & Victory E. Frantz Scholarship Fund  
Fuggazzotto Scholarship Fund for Visual Arts Students  
Wilma Jean Fynewever Nursing Scholarship Fund  
Gauthier Family Fund  
Tom Gifford Scholarship Fund  
Grace Thatcher Scholarship  
Grand Haven Area Community Foundation Scholarship Fund  
Grand Haven Offshore Challenge Scholarship  
Mitz Hammond Hessmer Scholarship  
Barbara and Nicole Heacox Foreign Study & Travel Fund

## scholarship funds

Charles (Charlie) A. Bassett Endowed Scholarship Fund  
George Bitner Scholarship Fund  
Martin-Beverley-Todd Bomers Memorial Scholarship Fund  
Chris Bradley Endowed Memorial Scholarship Fund  
Janet R. Briegel Scholarship  
James W. Junior and Jane T. Brown Fund

Craig Councilor & Valerie Guttowsky Scholarship Fund  
Alex Crum Scholarship  
Dake Community Manufacturing Scholarship Fund  
Detter Family Foundation Education Scholarship  
Detter Family Foundation Leaders in Mathematics & Science Scholarship  
Ken & Barb DeWitt Scholarship Fund



### Frances Claire Reinecke Scholarship Fund

*The inspiration to give back to the community comes directly from family members who have demonstrated such generosity over the years. Now as grandchildren and great-grandchildren, it is our turn to carry forward the passion for helping others.*

*Our family chose to open a **scholarship fund** with the GHACF to honor the legacy left behind by our grandmother, Frances Reinecke, who committed a lifetime to her family, education, and community.*

*Our goal for this scholarship is quite intentional. We want the funds to directly impact a college-going student who has overcome obstacles, or perhaps is a first-generation college student. Our grandmother was relentless in her compassion toward all people, and she certainly had a special place in her heart for those whose life hasn't always come easy.*



### Mary E. McGinnis Social Work Scholarship Fund

*Mary E. McGinnis grew up in Elmhurst, Illinois and the family moved to Bingham Farms, MI after she graduated from high school. She attended Marygrove College and the University of Michigan, where she earned a bachelor's degree and completed post-graduate studies in social work.*

*Mary spent her entire career at Catholic Social Services of Wayne and Oakland County, MI, finding exceptional families for hundreds of wonderful children. She retired in 1996 in Ann Arbor and moved to Grand Haven in 2014 to be closer to family.*

*When Mary passed away after a courageous battle with cancer, her four children opened this **scholarship fund** to forever honor her and her love of giving back. An annual scholarship will be awarded to a Northwest Ottawa County applicant with at least junior status at any Michigan public or private college/university with a declared major in social work.*

S.J. Hecksel Memorial Scholarship Fund  
 Marjorie M. Hendricks Environmental Education Fund  
 Michael Herman Scholarship Fund  
 Hierholzer-Fojtik Scholarship Fund  
 J.R. Hilliard Memorial Scholarship Fund  
 Vernon J. & Shirley M. Hipwell Family Music Scholarship Fund  
 Hoffman Family Scholarship Fund  
 Hofma Scholarship Fund  
 Dale Janke Scholarship Fund  
 Seth Koehler Central High School Fund  
 Paul J. Laninga Memorial Scholarship Fund  
 Larson – Veneklasen Outdoor Education Scholarship  
 Rick and Beverly Lattin Education Fund  
 Laughlin Family Scholarship Fund  
 Jack W. Leatherman Family Fund  
 Leitner Family Scholarship Fund  
 Caesy LeMieux Central-Mary A. White Schools PTA Fund  
 Friends of Loutit Library Fund  
 Loutit Scholarship Fund  
 Pat and John MacTavish Fund  
 Mandy's Promise Scholarship Fund  
 Ross Patrick McBride Scholarship Fund  
 Randal and Marilyn Mergener Scholarship Fund  
**Mary E. McGinnis Social Work Scholarship Fund**  
 David James Merkle Memorial Scholarship  
 Kyle R. Moreland Memorial Scholarship Fund  
 Nelson Family Scholarship Fund  
 North Bank Scholarship Fund  
 North Ottawa Hospital Auxiliary Fund  
 Alyssa Olafson Memorial Scholarship  
 Roy and Joyce Overway Family Scholarship Fund  
 Marvin R. & Pearl E. Patterson Family Fund  
 P.E.O. Chapter DS Scholarship Fund  
 Dr. Larry Poel Field of Medicine Scholarship  
 Edward & Barbara Post Family Scholarship Fund  
 Terry Linda Potter Scholarship Fund  
 David & Mary Race Vocational/Technical Scholarship Fund  
 Richard & Barbara Race Scholarship  
 David A. Reeves Scholarship Fund  
**Frances Claire Reinecke Scholarship Fund**  
 Jacob L. Reinecke Memorial Scholarship Fund  
 Daniel L. Reiss Memorial Scholarship Fund  
 Harold & Eleanor Ringelberg Scholarship Fund  
 Charles Robertson Scholarship Fund for Education  
 Runschke Family Scholarship Fund

Charles & Eleanor Rycenga Education Fund  
 St. John's Lutheran Church & School Scholarship Fund  
 St. Patrick's & St. Anthony's Church Scholarship Fund  
 Millicent Mary Schaffner Endowed Memorial Scholarship Fund  
 David & Jinny Schultz Family Fund  
 David & Sharon Seaver Family Scholarship Fund in Memory of Timothy D. Seaver  
 Del Shannon Memorial Scholarship Fund  
 Ken & Sandy Sharkey Family Scholarship Fund  
 Susan Shattuck Scholarship for Future Nurses  
 Lynne Sherwood Scholarship Fund  
 GH Rotary/Lynne Sherwood STRIVE Scholarship  
 Marion A. & Ruth K. Sherwood Business Scholarship  
 Marion A. & Ruth K. Sherwood Current College Scholarship  
 Marion A. & Ruth K. Sherwood Education Scholarship  
 Marion A. & Ruth K. Sherwood Engineering Scholarship  
 Marion A. & Ruth K. Sherwood Medical Scholarship  
 Marion A. & Ruth K. Sherwood Michigan Colleges Alliance Scholarship  
 Miller G. Sherwood Family Scholarship Fund  
 Maryadele Sparks Scholarship Fund  
 Spartanwill Scholarship Fund  
 Spring Lake High School Social Studies Prize  
 Frank and Virginia Such Memorial Scholarship Fund  
 Edward P. Suchecki Family Scholarship Fund  
 Henry D. and Ruth G. Swartz Family Fund  
 H. Wayne VanAgtnael Cosmetology Scholarship Fund  
 Marv VandenBosch Scholarship Fund  
 Lorraine VanBeukering Scholarship Fund  
 VFW Post 2326 Ward-Goff Memorial Scholarship Fund  
 Waters' Family Scholarship Fund  
 Louise Wachter Wickham Scholarship Fund  
 Mary E. Wilsberg Scholarship  
 West Michigan Nursery and Landscape Association Scholarship Fund  
 Paul Wolbrink Scholarship Fund  
 Women's Club of Grand Haven  
 Daryn Renee Worpel Scholarship  
 Herman J. & Helen D. Wyngarden Memorial Scholarship Fund  
 Zenko Family Fund  
 Leo Zupin Memorial Scholarship Fund



## Athena Scholarship Fund

The Lakeshore ATHENA Scholarship Fund was created in collaboration with The Chamber of Commerce Grand Haven, Spring Lake Ferrysburg, Michigan West Coast Chamber of Commerce, and the Muskegon Lakeshore Chamber of Commerce to assist women in reaching their full potential through financial support for training programs and education.

Female applicants 30 years or older who live or work in Ottawa, Allegan, or Muskegon County may apply. Other criteria the applicant must meet includes completion of one year of higher education, plans to continue her education at a West Michigan area accredited 4-year, 2-year, or technical or vocational program, and have limited financial resources. Applicants must also demonstrate a commitment to a professional, business, or entrepreneurial career.



## 2019 GHACF Scholarship Committee

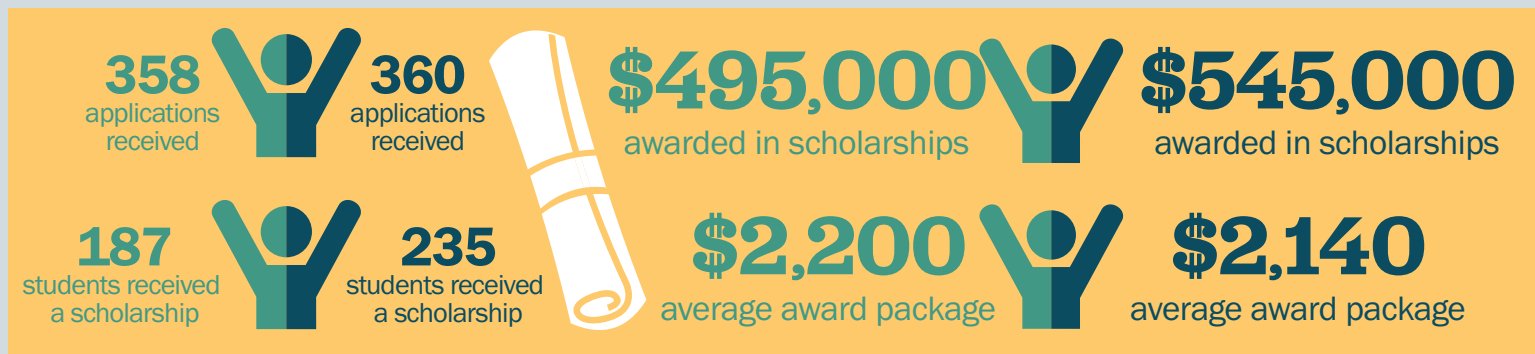
Our scholarship committee is made up of board members and representatives from the community. Together they make the critical decisions to help area students attain a post-secondary education.

Sandy Huber, <i>Chair</i>	Pat VerDuin	Monica Verplank
Susan Tater	Brian Sabo	Angie Prieditis
Melinda Brink	Debra Mann	

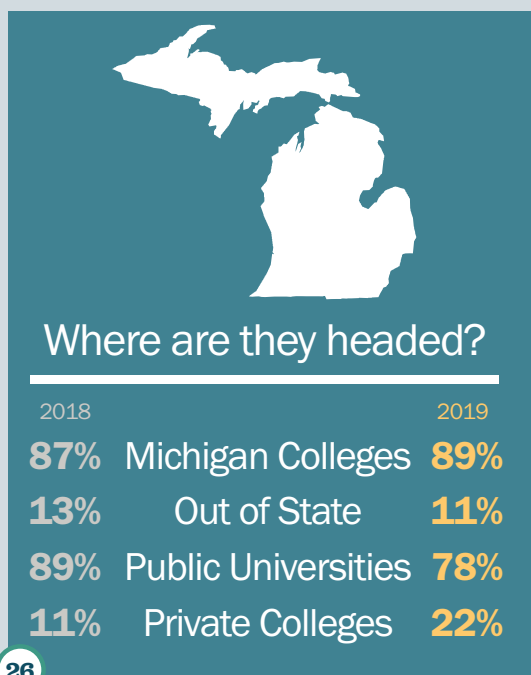
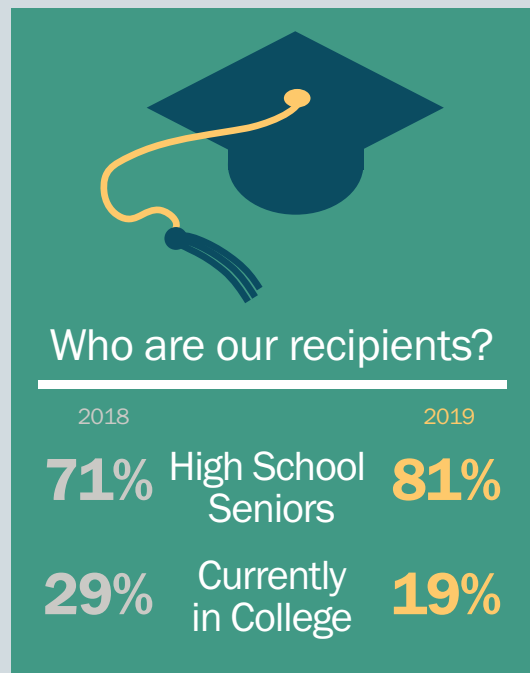


# making a post-secondary education a reality

Getting into your dream school is tough enough without worrying about how to pay for it. Thanks to our generous donors, 235 students received a combined \$545,000 in scholarships in 2019. Donors and recipients gathered for an event in July, where students thanked donors and shared their plans for the future.



We're constantly exploring new ways to support **first-generation college students** and **students pursuing post-secondary education in critical career fields in our region.**





# audited financial statement

Through December 31, 2018

Effective stewardship of philanthropic assets is paramount to building permanent charitable funds that strengthen our community.

## Assets

Cash & Equivalents	\$1,550,902
Investments	112,522,961
Notes Receivable	207,452
Bequests Receivable	2,389,663
Other Assets	6,623
Property & Equipment	1,404,089
<b>Total Assets</b>	<b>\$118,081,690</b>

## Liabilities

Accounts Payable	\$9,028
Grants Payable	654,151
Charitable Gift Annuities Payable	108,947
Funds Held as Agency	6,465,574
<b>Total Liabilities</b>	<b>\$7,237,700</b>

## Net Assets

Unrestricted	\$110,843,990
<b>Total Liabilities and Net Assets</b>	<b>\$118,081,690</b>

### 2018-19 Investment Committee

**Tammy Bailey, CFP, CIMA**, Chair  
President, Buy Right Packaging Supply

**Randy Hansen**  
President, Centennial Securities

**Barbara VanHeest**  
Relationship Manager, Chase Business Banking

**Nelson Jacobson**  
Chairman, CEO & President, JSJ Corporation

**Nick Grinzinger**  
Financial Advisor, Edward Jones

# Coopersville Area community foundation<sup>SM</sup>



## 2018 Competitive Grants

### Health & Human Services

**\$15,500**

### Education

**\$1,969**

### Economic & Community Betterment

**\$2,677**

### Total

**\$20,146**



## 2019-20 Advisory Board

Jose C. Gomez, Sue Buth, Leo Raap (Treasurer), Jen Breen (Chair), Jeff Johnson, Kari Fuller (Director), Cori Conran, Cheryl Annen, Kelley Monterusso (Vice-Chair), and Marty Alexander. Not pictured: Ira Engeltjes (Secretary).



**Assets:**  
**\$5,516,579**



**79 funds**



**Total granted:**  
**\$370,902**



**Granted by CAYAC:**  
**\$15,256**



## Coopersville Area Youth Advisory Council

CAYAC presenting a grant to the Coopersville Area Public Schools to pay for a Coopersville High School assembly from Kinetic Affect.

## Struyk Up the Band Fund

This **designated fund** was created to honor retired band director Scott Struyk, and to support the Coopersville Band Boosters.

As the Coopersville Bands have grown over the years, the Coopersville Band Boosters will be able to use these funds to help purchase marching band and concert uniforms. This will help lighten uniform financial burdens and help them focus on other needs.

Scott Struyk said, "this was a surprise gift for me at my retirement concert. It started as a Band Booster project and I think it is a wonderful idea because it helps keep a great program going well into the future. It is truly an honor for me to see this fund continue to help our Coopersville Bands."





# Allendale

## community foundation<sup>SM</sup>



### 2018 Competitive Grants

#### Health & Human Services

**\$7,200**

#### Arts & Culture

**\$2,500**

#### Education

**\$4,677**

#### Environment

**\$4,000**

#### Total

**\$18,377**



### 2019-20 Advisory Board

Mark Allen, Ben Meyer (Chair), Gwen Luban, Kellen Brusveen, Gwen VanTimmeren, Rob Bristow (Secretary), Rebecca Casler, Jim Beelen (Treasurer), Hilda Wittingen. Not pictured: Kristi Roelofs (Vice-Chair)



Assets:

**\$2,571,288**



**40 funds**



Total granted:

**\$212,733**

## Ray and Alma Statema Park Stewardship Fund

Ray Statema was a tireless supporter of the Ottawa County Parks. This fund was created to recognize Ray and his wife Alma for their legacy of environmental leadership and the countless students they've inspired to serve their community.

This **organizational fund** will help schools pay for bussing costs and other expenses so students can participate in service-based workdays in Ottawa County Parks. Service-based workdays instill a stewardship ethic in future generations while enhancing the natural features within the park system.

Grants from this fund will also help pay for tools, equipment, and materials related to outreach and education for the work days.





# youth advisory council



## 2018-19 YAC members

Front row (l-r): Matt Bays, Ian Rant, Jalen Greene, Ellen Stolarski (Chair), Emma Visker.  
Middle row (l-r): Ben Garretson (Vice-Chair), Chloe Weigel (Secretary), Janna Ercole, Jackson Schulte, Charlie Parker (Treasurer), Tess O'Leary.  
Back row (l-r): Coltrane Bodbyl-Mast, Habeeb El-amir, Muskaan Multani, Olivia Perrier, Liam Beck, Madison Rogers, Madelynn Streng.  
Missing: Matt Marcus and Oliver Shampine

**Vision:** A community where all youth have the resources and opportunities available that allow them to succeed.

**Mission:** We aim to set an example for future generations by giving of time, talent, and treasure to actively impact the lives of youth in Northwest Ottawa County.

## We Value

- » **Empathy:** to understand the needs of the youth in our community
- » **Integrity:** to make equitable decisions for the youth of our community
- » **Collaboration:** using innovation and teamwork
- » **Open-mindedness:** through a passionate and diverse group of youth representatives



"YAC is **where I learned about my passion for humanitarian work and philanthropy**, and now I want to do that on a global scale for the rest of my life." —Chloe Weigel, GHHS senior

"I joined YAC to make a change and increase acceptance for the disabled in our in our community. **I hope we can spread more information about those with disabilities like autism**, as the term has been used as an insult by my peers. However, I believe with a proper understanding of autism, they will be less likely to use it as an insult." —Coltrane Bodbyl-Mast, SLHS senior

"My favorite part about YAC is the empowerment it encourages and the leadership it builds in youth. By providing a platform where youth can make a difference, **YAC allows us to give back to our community in ways that weren't possible before.**" —Ben Garretson, WMCHS junior

Stuffing stockings for families staying at the Ronald McDonald House of Western Michigan.

As YAC seeks to create platforms and various avenues for our youth to express their thoughts, ideas, and opinions in meaningful and engaged ways, they developed a Youth Arts Showcase to highlight the creative side of many of the high school students in our community.

## » Youth are CREATIVE ◀

During the Showcase, photography, paintings, drawings, and creative writing covered the walls at Jumpin' Java.

The following pieces were selected:

*People's Choice (creative writing):*

I Invite, by Faith Stevens

*People's Choice (art):* The Best Smile and

a Heart Full of Love, by Addelyn Wachter

*Judge's Choice:* Paul Moffett, drawing

*Community Award:* Coast Guard photo, by Carlos Rappleye



(left) Written entries at the Youth Are Creative Art Showcase.  
(above) Musical entry (student) and art entries (on wall) .

Over the past few years, the GHACF Youth Advisory Council has made a strategic move to become a more diverse and inclusive group of youth interested in community awareness, engagement, and change. A mission, vision, and values were developed by our youth grantmakers and leaders, and they're working hard to increase the scope and reach of the program. Each year, they've made progress and are striving to select members that contribute to the goals, mindset, and culture of the program.

"teach them to be good stewards by giving them opportunities to make the hard decisions on wise giving. It will give them the opportunity to ask, to serve, and through serving, to lead.

"Tomorrow's governors, mayors, chief executive officers, and executive directors will be trained through the Michigan Community Foundation Youth Project. Even more importantly, so will tomorrow's Little League coaches, Big Sisters, Cub Scout leaders, Sunday school teachers, and community foundation trustees."

## empowering young philanthropists

They sifted through the data from the Youth Needs Assessment conducted every two years to determine not only their grantmaking focus, but their overall programmatic goals. Using this, our youth have developed a Youth Empowerment platform—a place to give youth a voice in the community, learn about community issues, and interact and engage in meaningful conversations with other youth.

**The goal is to empower youth to be changemakers, give them the tangible skills to make sound decisions, become critically aware of some of the issues their peers face, and provide them with platforms to be community advocates.**

Their first step was the Spark Tank Initiative, which launched in early 2017, and in 2018, they held the first Youth Are Creative Art Showcase (see above).

YAC members also reflected on the launch of the 1991 philanthropic initiative to launch youth philanthropy programs in Michigan. The GHACF YAC began with a challenge grant from the WK Kellogg Foundation to get youth engaged in philanthropy and community change. In Dr. Russ Mawby's 'Why Youth? Why Community Foundations?' keynote address announcing the initiative, he explained that the Michigan Community Foundations' Youth project aims to:

**"When we invest in the development of today's young people, we are really investing in the development of the next generation, and the next, and the next. The ripples spread out from our investment—and where, they will end, we can never know." — Dr. Russ Mawby**

We're building the future leaders of our community, region, state, and beyond. Our goal is to continue to spread our investments and reach to more youth in our community.





# leaving a legacy

For the third year in a row, we celebrated our **Legacy Society** with a party at the Spring Lake Country Club, sponsored by many generous Legacy Society members. It was an evening of music, laughter, and reconnecting with friends—as well as reflecting on those who passed since we last gathered.

Thank you to those who have chosen the community foundation as a way to improve and enhance this community for future generations through a planned gift. Leaving a gift to the community foundation enables you to support the causes you love—forever.



Tom & Mary Kay Alguire  
Donald & Cindy Anderson  
Len & Wanda Anderson  
David Baas  
Gary L. & Paula B. Baas  
William & Mary Baker  
Steven & Kathryn Bandstra  
Sue Barrett  
Charlie & Mary Jo Bassett  
Charles (Chad) Bassett II  
Paul Bedient  
William & Carolyn Benes  
Carroll & Dottie Bennink  
Patrick S. Berg  
Jeff & Tammy Beswick  
Susan & Mark Blauvelt  
William & Katherine Blessing  
Mary Jane Boettcher  
Norm & Carolyn Boeve  
T. Arnold & Lynne Boezaart  
Calvin & Evelyn Bosman  
Barbara Boyer  
Tom Braciak  
Janet R. Briegel  
Richard Carl & Patricia K. Briegel  
Budd & Melinda Brink  
James & Jane T. Brown  
Fred Bruhn  
John & Claire Bryson

Cheri & Ron Bultje  
Edward F. Bushouse  
Robert Bytwerk  
Kevin Carbery & Carol Alexander  
Nancy Carlyle  
Cyndi Casemier  
Stacey Cassis & Arianna Morales  
Joe & Cheryl Clark  
Margaret Coffey  
Harold "Pete" & Cindy Crane  
Kennard & Wendy Creason  
Mary Creason

Thomas & Michelle Creswell  
Scott Curtis  
David & Carol DeBlaey  
Terry & Sandi DeGroot  
Daniel & Brenda DeVeau  
Barbara DeWitt  
Ralph DeYoung  
Virginia Dornbos - Rolstone  
James A. & Dulce Doss  
Megan & Jamie Doss  
Joyce Draft  
Dennis & Barbara Dryer

Dwight & Gloria Durkee  
Myrna Duthler  
Jim & Marla Dykstra  
Robert & Nancy Dzierzawski  
David & Mary Eagin  
Martha Erickson  
Jon & Glenda Eshleman  
Steve & Mary Jane Evink  
Wallace & Jane Ewing  
Patricia Fisher  
John & Kathryn Fortino  
Patrick & Robin Fraker

Barbara Fugazzotto  
Edward "Tony" Gage  
Gretchen Garrison  
Rob & Jill Garrison  
Tom Gifford  
Edward & Laura Grafton  
Randy & Nancy Grevel  
Edward & Nancy Hanenburg  
Janet A. Harestad  
Steve & Tami Harvey  
Shirley Hipwell  
Andy & Alice Hoban

## Legacies Remembered:

Tom Kelso • Lynn Middlebrook • Nancy Powell • Gary Verplank







Bud & Charyn Hoffman  
 Stephen & Joy Hohmeyer  
 Judith W. Hooyenga  
 Jim & Deb Hovinga  
 Paul & Diana Hugo  
 Sherry Jackoboice  
 Tom & Barb Jackoboice  
 Mary Jacobson  
 Nelson & Lana Jacobson  
 Nancy Jacobson Bueche  
 Bari S Johnson  
 Holly & Erick Johnson  
 Dorothy Johnson  
 Roger & Susan Jonas  
 Jeff & Kellie Jullie  
 James & Mary Keating  
 Katherine L. Keck  
 J. Gregg & Mary Keeton  
 Jack & Joanne Kelley  
 Sanford "Mark" & Kristine Kelley  
 Barbara Kelso  
 Phil & Jane King  
 Thomas & Kimberly Kitchen  
 Dave & Sandy Klaassen  
 Kurt & Jennifer Klaassen  
 Mark A. & Elizabeth Kleist  
 Raymond & Betsy Komray  
 Scott & Madonna Kramer  
 Ken Lahey  
 Keith & Bernice Lamkin

Tom & Jackie Laughlin  
 Philip M. & Betty J. Leech  
 Jane E. Leonard  
 James & Nancy MacLachlan  
 Angelo & Laura Marasco  
 Michael McKeough  
 Nina McKeough  
 Larry & Anne McLaughlin  
 Damon & Kim McLaughlin  
 Douglas McNeil  
 Sandra & Frank Mercurio  
 Muriel Mersereau  
 Robert J. & Donnell S. Mersereau  
 Garry L. & Jean Fisher Mesler  
 Nancy E. Middlebrook  
 Dr. James Moore &  
 Patricia Eddington  
 Phyllis A. & Darell L. Moreland  
 Steven & Sandra Moreland  
 Evelyn Morford  
 Donald & Nancy Moss  
 Peter & Sheila Murdoch  
 Nancy & Charles Nagtzaam  
 John and Kathryn Nash  
 Raymond F. & Barbara J. Nelson  
 Matthew M. & Kathryn E.  
 (Jerovsek) Olds  
 Greg Oleszczuk & Jeanine  
 Taghon-Oleszczuk  
 James & Ruthann Olthoff  
 Roy & Joyce Overway

Jill & Tim Parker  
 Pearl E. Patterson  
 Dan & Eileen Paull  
 Elizabeth Peel  
 Thomas C. Pegg  
 Anita Pellegrom  
 Matthew & Joyce Pellegrom  
 James & Marsha Peterson  
 John Planteroth  
 Larry Poel  
 Craig & Coreen Porter  
 Edward & Barbara Post  
 Shirley A. & Ted A. Poulton  
 Joseph & Nancy Prinzi  
 Bill & Aileen Redeker  
 Field Reichardt  
 Rosanne M. Reiss  
 Gerald Retzlaff  
 Richard & Nancy Rhem  
 Evelyn Morford  
 M. Gary & Pennie Robertson  
 Lloyd Rotz  
 Sylvia & Ron Ruscett  
 Robert & Bobbi Jones Sabine  
 James Schmidt  
 Richard & Carol Scholler  
 David & Jinny Schultz  
 David & Sharon Seaver  
 Kenneth & Sandra Sharkey  
 William & Susan Shattuck  
 John & Patricia Shears

Budge & Marilyn Sherwood  
 Gary & Karen Sherwood  
 Karen Shields  
 Donald & Dorothy Sikkema  
 Gerald & Linda Slagel  
 Robert E. & Janice D. Sluka  
 Gary & Jorri Smith  
 Julie Smydra  
 Linda S. Shores &  
 R. Michael Snodgrass  
 Rick & Mary Ann Snyder  
 Tyler M. Stafford  
 James J. & Sheila G. Steffel  
 Peter & Carolyn Sturuss  
 Kent & Bonnie Suchecki  
 Ruth Suchecki  
 Dennis & Carol Swartout  
 Dan & Ann Tabor  
 Cliff Taylor  
 Philip & Mary Kay Taylor  
 James & Mary Teitsma  
 Guy & Alisha Terrill  
 Peter & Judy Theune  
 Joseph & Carol Uridil  
 Edith VanBurgal  
 Rick & Donna vandenBerg  
 John & Marianne VanEenaam  
 Dale & Susan VanZantwick  
 Elinore "Norna" Verplank  
 L. J. "Midge" Verplank

Tony & Monica Verplank  
 Margot L. Van Dis &  
 Jeffrey R. Miller  
 Robert & Deborah Wagenmaker  
 David & Patricia Walborn  
 Ruth Wallinga  
 Walt & Daphne Weber  
 Amy L. West  
 Andrew Wheeler  
 Curtis & Terri Whiting  
 David & Mary Whiting  
 Robert & Annette Whitney  
 Nancy & Warren Wildeman  
 Leslie Wills  
 Paul Withun & Leslie  
 Cassis-Withun  
 David & Karen Young  
 Rosemary A. Zink  
 Michael & Sasha Zolik  
 Douglas & Janice Zuidema  
 Marian Zupin





## board of trustees



*Randy Hansen*  
Chair



*Chad D. Bush*  
Vice-Chair



*Nelson Jacobson*  
Secretary



*Barb VanHeest*  
Treasurer



*Cindy Anderson*  
Trustee



*Tammy Bailey*  
Trustee



*Keith Konarska*  
Trustee



*Anil Mandala*  
Trustee



*Mark Pereira*  
Trustee



*Pat VerDuin*  
Trustee



*Shirley Woodruff*  
Trustee

## outgoing board members

We are grateful for the years of service from Sandy and Mark, and we look forward to their continued leadership in our community.



*Sandy Huber*



*Mark Kleist*

## the GHACF team



*Hadley Streng*  
President



*Chris Riker*  
Vice President  
of Advancement &  
Donor Services



*Patty MacDonald*  
Vice President  
of Finance &  
Administration



*Holly Cole*  
Vice President of  
Grants & Program



*Melanie Swiftney*  
Director of  
Marketing &  
Communications



*Kari Fuller*  
Director, Coopersville  
Area Community  
Foundation



*Lauren Grevel*  
Education & Youth  
Initiatives Officer



*Adrienne Whisman*  
Philanthropic  
Services Associate



*Crystal Weersing*  
Administrative  
Assistant



thank you



We're honored to represent the Grand Haven Area Community Foundation. We love this community as much as you do, and we're proud to continue the good work of our founders each and every day.

**To learn more about our team, visit [GHACF.org/Meet-The-Team](https://ghacf.org/Meet-The-Team).**



**Grand Haven Area**  
**community foundation**<sup>SM</sup>

One South Harbor Drive • Grand Haven, MI 49417  
(616) 842-6378 • FAX (616) 842-9518  
[www.ghacf.org](http://www.ghacf.org) • [info@ghacf.org](mailto:info@ghacf.org)  
[Facebook.com/GrandHavenAreaCommunityFoundation](https://Facebook.com/GrandHavenAreaCommunityFoundation)





**Grand Haven Area**

**community foundation**<sup>SM</sup>

1 South Harbor Drive  
Grand Haven, MI 49417

[ghacf.org](http://ghacf.org)

We **inspire**  
**philanthropy**  
so together  
we can **care for**  
**our community.**



Re-Confirmed in Compliance  
with National Standards for  
U.S. Community Foundations

Excellence, Accountability, Impact.™